

ONLY DENTAL STUDIO STORY  
**SOLVES EVERYTHING**





ONLY DENTAL STUDIO STORY

Solves everything



## CONTENTS

### 02 DR. COLLECTION

DR. JEON IN SEONG  
DR. CHO YONG SEOK  
DR. CHO DAE SUNG  
DR. JANG HO YEOL  
DR. OH SANG YUN  
DR. HYUN YOUNG KEUN

### 28 IMPLANT TOOLS

BONE COLLECTOR  
EASY IMPLANT GUIDE KIT  
IMPLANT & SCREW REMOVER KIT(S)  
IMPLANT REMOVER KIT(S)  
IMPLANT REMOVER KIT  
SIMPLE SCREW REMOVER KIT  
SINUS COMBINATION KIT(S)  
SINUS COMBINATION KIT  
-SINUS CRESTAL APPROACH KIT  
-SINUS LATERAL APPROACH KIT  
SIMPLE SINUS REAMER KIT  
AQUA SINUS LIFT KIT  
BONE EXPANDER KIT  
INCISOR & SEPTUM TRIMMER KIT  
TITANIUM BRUSH  
EASY SCREW RETRIEVER KIT  
TREPHINE  
TISSUE PUNCH  
DIAMOND BUR  
SOFT TISSUE TRIMMER  
MESH  
BONE TRIMMER KIT  
PRF BOX  
ABUTMENT ALIGNMENT PIN KIT

### 62 EASY SERIES

HYBRID ELEVATOR  
EASY BLADE HOLDER  
EASY BLADE REMOVER  
EASY FORCEPS FOR CHILDREN  
EASY MULTY NEEDLE HOLDER  
EASY 360° SURGICAL SUCTION  
EASY IRRIGATION TUBE  
EASY PERIOTOME  
EASY LUX  
EASY FORCEPS  
EASY SINUS CURETTE  
EASY BONE SCRAPER  
EASY MICRO BONE SCRAPER

# IMPLANT



DR. CHO YONG SEOK   DR. JEON IN SEONG   DR. OH SANG YUN   DR. JANG HO YEOL



DR. CHO SEUNG HWAN   DR. HYUN YOUNG KEUN   DR. CHO DAE SUNG   DR. PARK JUNG CHUL

# ORTHODONTIC



DR. HAN KWANG HEUNG   DR. CHOI JAE WON

DENTAL STUDIO  
DR. COLLECTION

## IMPLANT

Dr. Cho Yong Seok  
Dr. Jeon In Seong  
Dr. Oh Sang Yun  
Dr. Jang Ho Yeol  
Dr. Cho Seung Hwan  
Dr. Hyun Young Keun  
Dr. Cho Dae Sung  
Dr. Park Jung Chul

## ORTHODONTIC

Dr. Han Kwang Heung  
Dr. Choi Jae Won



CODE NO. 7300U  
Dr. Jeon In Seong

DR. COLLECTION  
JEON IN SEONG



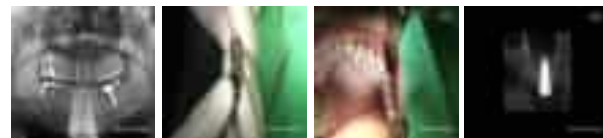
# DR. JEON'S UNIVERSAL KIT

## Feature

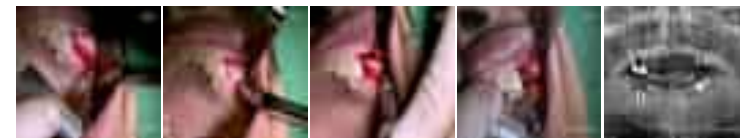
- Integrated kit perfect for all implant surgical procedures.
  - The use of core lifter allows simple, safe and fast operation in the maxillary sinus lift.
  - The splitter and bone disk allows simple and safe alveolar bone cutting.
  - The easy-to-use tack and wide screw make barrier membrane fixation and removal a simple task.
- ✓ One kit suitable for all implant systems.
  - ✓ The kit allows procedure when alveolar ridge height is below 5mm.
  - ✓ Based on many years of clinical experience, this kit complements the concept of the existing procedures and increases the success rate of implant placement.

## Direction for use

### ■ CORE LIFTER 1



### ■ CORE LIFTER 2



### ■ SPLITTER AND LATERAL



## COMPONENT



1. Bone tack : Used to fix resorbing or non-resorbing barrier membranes.
2. Bone tack carrier : Device to hold the Bone Tack and used with mallet.
3. One Shot Drill 3.8mm: It is used for 3.8mm straight drilling for the smooth entry of the core lifter
4. Core lifter 1: Used to form the core in the remaining maxillary sinus floor after first drilling.
5. Core lifter 2: Used to lift the bony window and locate it inside the maxillary sinus.
6. Disk : Used for initial entry when performing ridge splitting procedure.
7. Flame bur 1,2 : Used to grind exposed thread in peri-implantitis cases.
8. Hand Driver : Connects with bone tack carrier, core lifter and splitter.
9. Dual Double Blade Holder : Used for soft tissue grafting procedures.
10. Screw Retriever : Easily retrieves broken prosthetic screw.
11. Splitter 1 : Use for ridge split or osteotomy widening procedures.
12. Splitter 2 : Use for wider ridge split or osteotomy widening procedures.
13. Stopper 3 : Shrouds the sinus drill ensuring a safe 3mm drilling height.
14. Stopper 4 : Shrouds the sinus drill ensuring a safe 4mm drilling height.
15. Stopper 5 : Shrouds the sinus drill ensuring a safe 5mm drilling height.
16. Stopper 6 : Shrouds the sinus drill ensuring a safe 6mm drilling height.
17. Wide Cover Cap : Used to fix the resorbable barrier membranes in over-contouring GBR procedures.





CODE NO. WCC  
Dr. Jeon In Seong

DR. COLLECTION  
JEON IN SEONG



# DR. JEON'S WIDE COVER CAP (WCC)

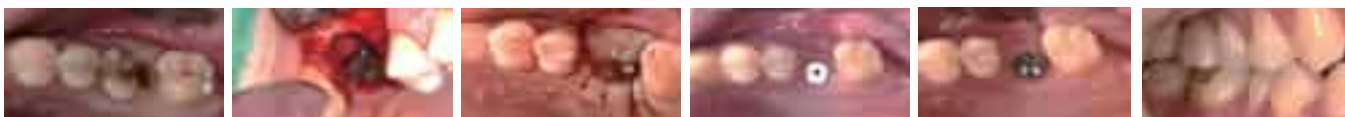
## Feature

- A novel method to fix resorbable barrier membranes and support graft in over-contour GBR procedures.
- Simple and safe to use.
- ✓ Cap can be bent to match bone or tissue contour which, in certain cases, removes the need for barrier membranes.
- ✓ Adaptation of the flexible cap can replace the need for additional membrane fixation.
- ✓ Removes the concern associated with barrier membrane exposure.

## Direction for use



■ CASE 1 After extraction, the wide cover cap is used without barrier membrane.



■ CASE 2 Can replace barrier membrane fixation in challenging cases.

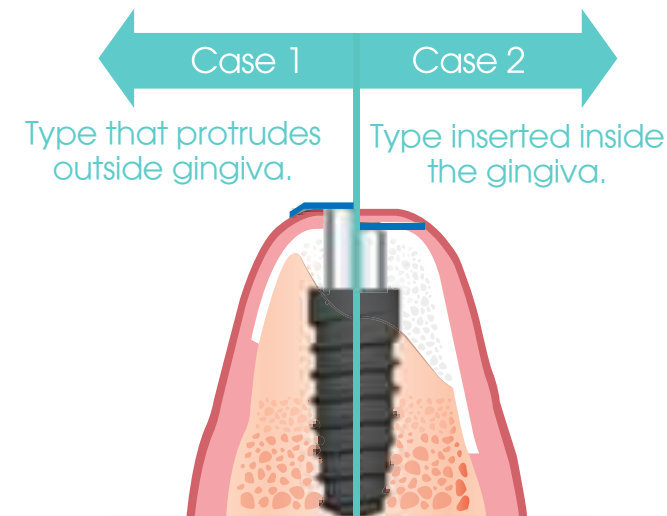


## COMPONENT



Diameter(D)	Length(L)	Code No.
Ø 6.0	2mm	WCC-621
	3mm	WCC-630
	4mm	WCC-640
Ø 7.0	2mm	WCC-721A
	3mm	WCC-730A
	4mm	WCC-740A
Ø 8.0	2mm	WCC-821A
	3mm	WCC-830A
	4mm	WCC-840A

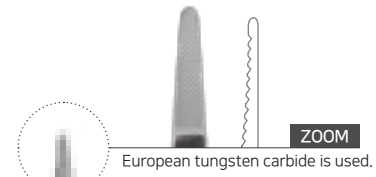
- Simplifies GBR procedures.
- Bone regeneration in between fixture and wide cover cap.
- Removes risk associated with barrier membrane exposure.
- Can remove the requirement for barrier membranes.





CODE NO. 7000  
Dr. Jeon In Seong

DR. COLLECTION  
JEON IN SEONG



# DR. JEON'S SURGICAL PACKAGE

## Feature

- Dr. Jeon's Surgical Kit is based on Dr. In-sung Jeon's many years clinical experience.
- 15 instruments optimized for those new to implantology.
- Economical and efficient.
- Tungsten carbide of European origin for precise surgery

## Direction for use



CODE NO. 1103B



CODE NO. 4606



CODE NO. 1204B



CODE NO. 2102



CODE NO. 4701S



CODE NO. 4704S



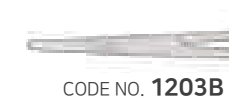
CODE NO. 4003S



CODE NO. 4005S



CODE NO. 5362



CODE NO. 1203B



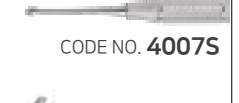
CODE NO. 4602



CODE NO. 5701



CODE NO. 4703S



CODE NO. 4007S



CODE NO. 5103S

CODE NO.	PRODUCT NAME
1103B	Needle Holder NH5042
4606	Dual Double Blade Holder
1204B	HEMOSTATS H3
2102	Iris Scissor S5083
4701S	Periosteal Elevator Molt9
4704S	Periosteal Elevator P24G
4003S	Surgical Curettes LUCASS86
4005S	Surgical Curettes MILLER11
5362	Advanced Micro Tissue Forcep
1203B	HEMOSTATS H4
4602	Mess Holder Round
5701	Bone Well 2
4703S	Periosteal Elevator Seldin
4007S	Surgical Curettes Molt2/4
5103S	Langenbeck Retractor



CODE NO. 3100S-D

DR. Cho Yong Seok

DR. COLLECTION  
CHO YONG SEOK



# DR. CHO'S EZ EXTRACTION PACKAGE



4704B



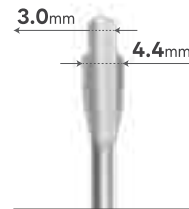
## PERIOSTEAL ELEVATOR

### P24G Periosteal Elevator

- Effective design for flap elevation after incision.
- Essential for third molar extraction and all types of flap elevation surgeries.



3105B



## DUAL EDGE ELEVATOR

- Easy access between narrow periodontal ligaments with a thin blade of dual width
- Allows powerful wedge and wheel & axle action
- Essential for third molar extractions and root canal-treated tooth extractions



3101B

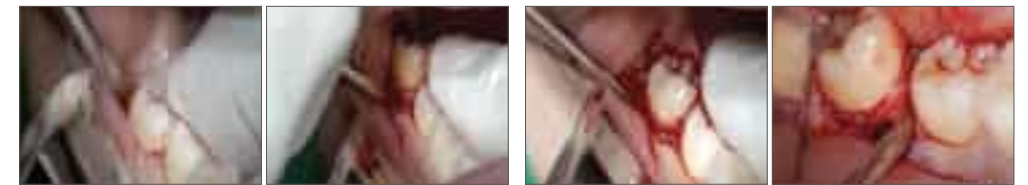
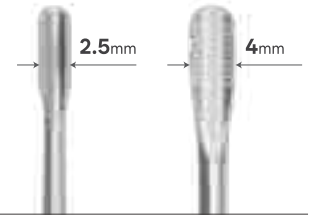


3103B

## ELEVATOR STR SAW TYPE

### Straight Elevator with Micro Saw (N) / (W)

- Improved accessibility and efficient force transmission with a long working end
- Easy tooth dislocation with efficient force transmission
- Micro Saw blade structure prevents slipping and maintains root contact



3011B



3012B

## ELEVATOR LEFT / RIGHT

### Curved Elevator (L) / (R)

- Essential for cases where access with a straight elevator is difficult.
- Allows for efficient access and tooth sectioning and removal.



## MINNESOTA RETRACTOR

- A design that is comfortable for both the patient and the practitioner.
- Conveniently choose between narrow and wide diameter blades depending on the case.



5101D





CODE NO. 7130  
**Dr. Cho Dae Sung**  
**Dr. Jang Ho Yeol**

**DR. COLLECTION**  
**CHO DAE SUNG**  
**JANG HO YEOL**



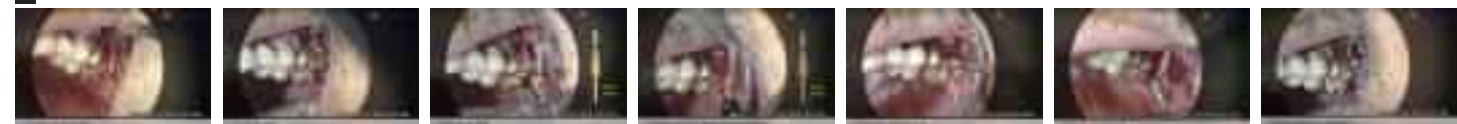
# AERO DRILL (POP-UP DRILL)

## Feature

- Allows crestal approach sinus lift at reduced residual bone heights.
- During drilling, the elastic force of the spring can safely lift the mucous membrane of the maxillary sinus without tearing.
- Maxillary sinus lift can be performed with one drill for a simplified procedure.
- The bone window is lifted inside the sinus to create space for new bone and promotes bone healing.
- ✓ Quick and Efficient and eliminates more complex lateral wall procedures.
- ✓ Most cases can be completed with one spring drill.
- ✓ Facilitates safe sinus lift procedure even in difficult access cases.

## Direction for use

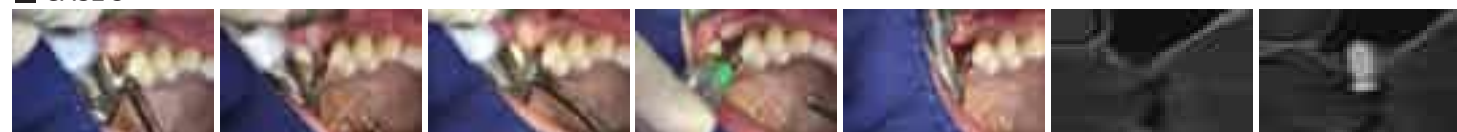
### ■ CASE 1



### ■ CASE 2



### ■ CASE 3



## COMPONENT



1. Tissue Punch : It is used to remove gingival tissue during surgery.
2. Oneshot drill 3.2mm : It is used for 3.2mm straight drilling for the smooth entry of the aero drill.
3. Aero drill : It is used for maxillary sinus lift.
4. Drill Remover : It is used to separate the drill part and the shank part.
5. Aqua Tip : It is used when lifting the sinus membrane with water pressure.
6. Spring Stopper : When using Aero Drill, it is used to separate the drill portion and the shank portion in order to clean the inside of the drill.
7. Aero Drill O-Ring : When the red rubber ring inside Aero Drill is damaged, it is used for replacing the rubber ring.
8. Stopper 3 : Shrouds the sinus drill ensuring a safe 3mm drilling height.
9. Stopper 4 : Shrouds the sinus drill ensuring a safe 4mm drilling height.
10. Stopper 5 : Shrouds the sinus drill ensuring a safe 5mm drilling height.
11. Stopper 6 : Shrouds the sinus drill ensuring a safe 6mm drilling height.

DR. COLLECTION  
CHO DAE SUNG



CODE NO. 7450

DR. Cho Dae Sung



# DR. CHO'S SCREW HOLDER KIT

## Feature

- holds the prosthetic screw for safe and secure operation.
- Prevents the driver from being swallowed during fixation or removal.
- ✓ Allows fixation of a 2nd driver at the base for efficiency.
- ✓ Non-slip design reduces hand fatigue and burden.

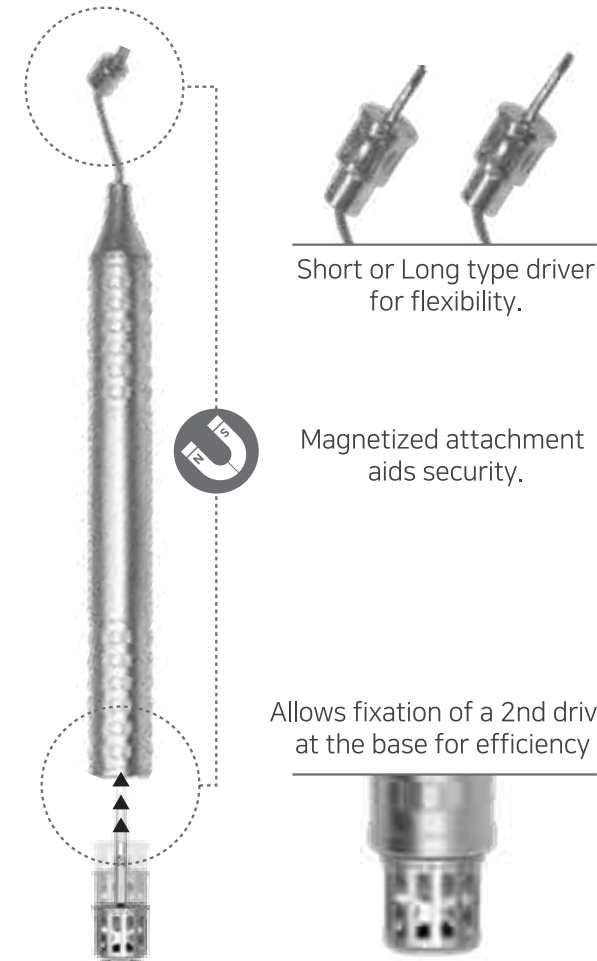
Model	Size	System
◆	1.0	Ankylos
◆	1.2	Osstem, Dio, 3I, C-Tech, ICM, MegaGen, T-Puls
◆	1.27	Dentium, Dentis, BEGO, Astra, Adin, MIS, Alpha Biotec, Biohorizon, Camlog, Antmed Cortex, Ticare, ABT, Zimmer
◆	1.4	Icx
★	NOB	Nobel, Basic Omni-Tight, DentalMaster
★	ITI	Strauman, Trausim, Bioconcept



Short

Long

Driver Holder



Short or Long type driver for flexibility.

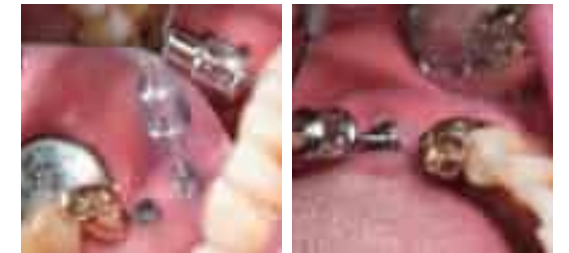
Magnetized attachment aids security.

Allows fixation of a 2nd driver at the base for efficiency

## case 1



## case 2



## Direction for use





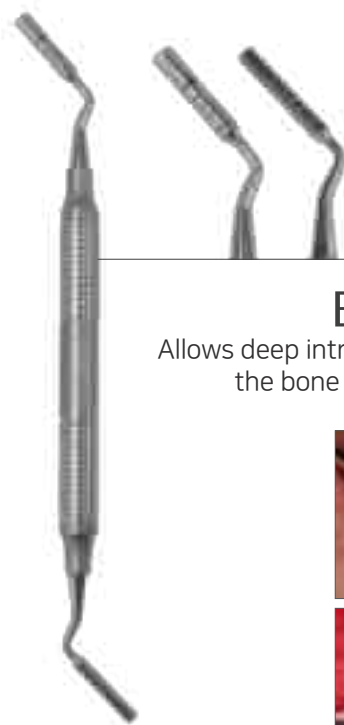


CODE NO. 7106  
DR. Jang Ho Yeol

DR. COLLECTION  
JANG HO YEOL



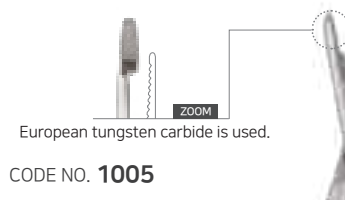
# DR. JANG'S TUNNELING TECHNIQUE BASIC KIT



CODE NO. 7102

## BONE CONDENSER

Allows deep intra tunnel insertion of the bone graft material

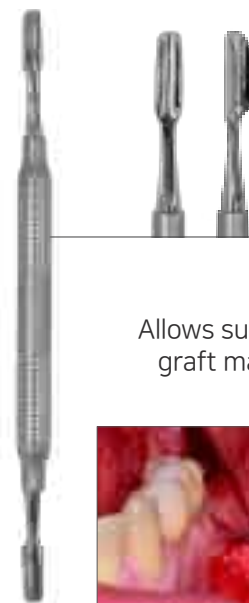


European tungsten carbide is used.

CODE NO. 1005

## EASY MULTI NEEDLE HOLDER

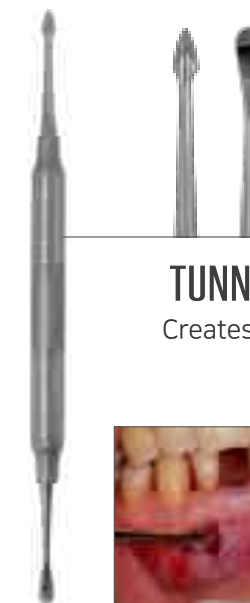
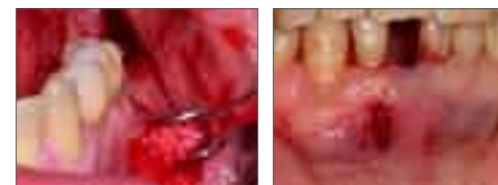
Combines a needle holder and scissors in one instrument allowing single handed suture placement and trimming.



CODE NO. 7103

## TUNNELING GUIDE

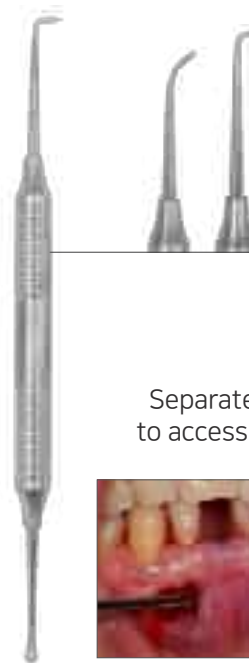
Allows sub periosteal insertion of bone graft material deep inside the tunnel.



CODE NO. 7104

## TUNNELING INITIAL ELEVATOR

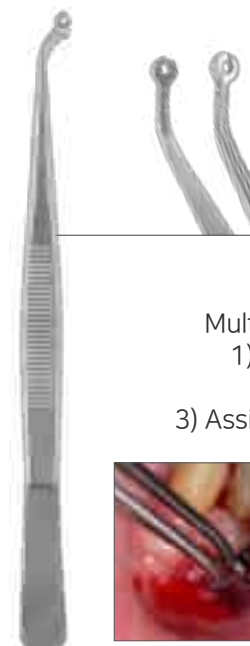
Creates vertical periosteal separation and tunnel expansion.



CODE NO. 7105

## TUNNELING ADVANCE ELEVATOR

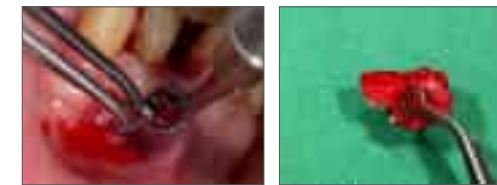
Separates the periosteum in difficult to access areas during tunnel creation.



CODE NO. 7101

## MULTI FORCEP

Multi-purpose instrument which:  
1) Holds bone graft material.  
2) Acts as tissue forceps.  
3) Assists suturing due to access ring.





CODE NO. 3000

Dr. Jang Ho Yeol

DR. COLLECTION  
JANG HO YEOL

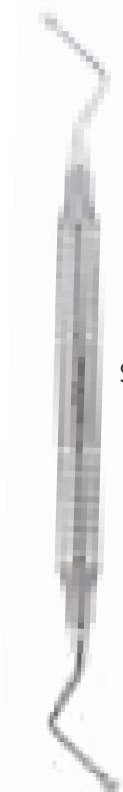
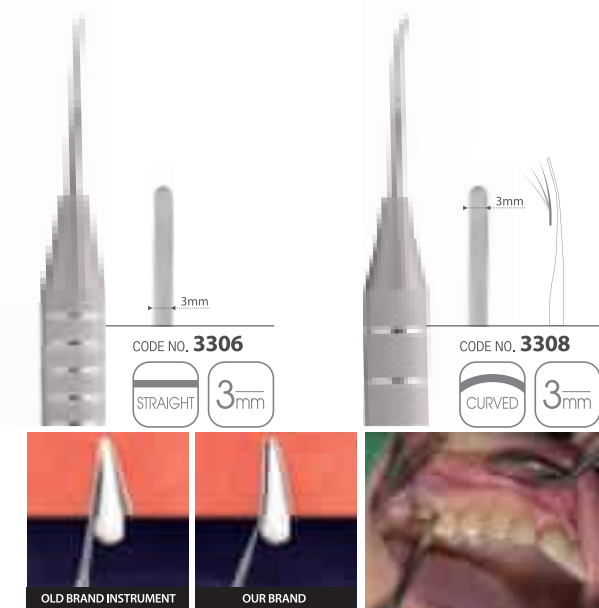


# DR. JANG'S EASY EXTRACTION BASIC KIT

EASY SERIES

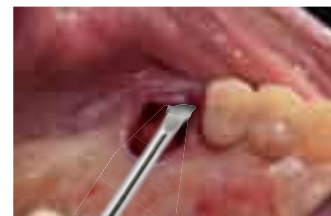
## EASY PERIOTOME

Thin & flexible blade aids separation of the PDL at the root apex.  
Enables safe extraction without damage to alveolar bone.



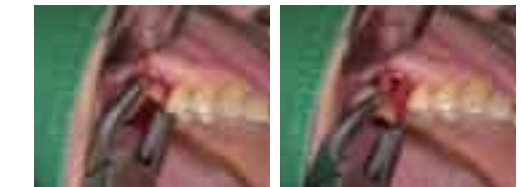
## SURGICAL CURETTE

Serrated edge allows easy removal of soft tissue.



## EASY FORCEPS

EASY FORCEPS with unique tip design hold the tooth whilst allowing separation of periodontal ligament. Reduces likelihood of root remnants whilst minimizing damage to the alveolar bone.



## EASY LUX

New Easy Lux has a thin, half twist blade for extra flexibility. This allows easy access to the PDL space for atraumatic separation of the tooth from the alveolar bone.





CODE NO. 7310

DR. Oh Sang Yun

DR. COLLECTION  
OH SANG YUN



# DR. OH'S BONE PREP SURGICAL KIT

## Feature

- A product developed to enhance the success rate of implant placement by refining traditional techniques based on years of clinical experience.
- Integrated kit optimized for implant surgical procedures.
- Optimized for surgeon's convenience, it aids in providing high-quality treatment.
- ✓ Designed to prevent slipping during drilling even on a narrow alveolar ridge, providing precise drilling.
- ✓ Equipped with a special drill designed to prevent shifting away from the cancellous bone.
- ✓ Composed of various diameters (4.0mm - 6.5mm), providing a wide range of options during surgery.
- ✓ Achieves drilling with 0.1mm safety gap, preventing fixture damage.
- ✓ As a drill that pairs with the guide pin, it allows safe bone removal without damaging the fixture.

### ■ Anterior maxillary



### ■ Anterior mandible



### ■ Anterior mandible



1. **Micro Saw Drill Ø1.0** : When drilling in a narrow alveolar ridge, it allows easy penetration into the narrow Cancellous bone between the hard buccal and lingual cortical bones.
2. **Point Drill Ø1.3** : A function that slightly enlarges the drilling site formed by the micro saw drill to prevent the next step drill from leaving the cancellous bone.
3. **Lindemann Drill Ø2.0** : Performing initial side cutting drilling prevents the end cutting drill in the next step from getting caught in the cortical bone of the side wall, resulting in incomplete site preparation.
4. **Diamond Bar Ø3.0** : Use when extending one side of a drilling site.
5. **Guide Pin Mini** : This is the part corresponding to the screw in the two-piece bone profiler, and it profiles the bone around the bone level implant to prevent it from getting caught during abutment installation.
6. **Guide Pin Driver** : Driver for Guide pin of bone profiler.
7. **Drill Extension** : Use when the handpiece gets caught on the adjacent teeth during bone profiling.
8. **Trephine Bur Ø3.5** : This is a trephine bur for implant site preparation and prevents the drill or implant from slipping to the buccal side by getting caught in the dense lingual bone during drilling or implant installation.
9. **Trephine Bur Guide Ø4.0** : Acts as a guide to ensure easy insertion without bouncing when making initial contact with the trephine bur.
10. **Bone Profiler Anterior Ø4.0 / 4.5 / 5.0 / 6.0** : This is the part corresponding to the female screw in the two-piece bone profiler, and it profiles the bone around the bone level implant to prevent it from getting caught during abutment installation.
11. **Bone Profiler Posterior Ø5.5 / 6.5** : One piece type bone profiler used when profiling bone around implant.





Dr. Oh Sang Yun

DR. COLLECTION  
OH SANG YUN



A) CODE NO. 7301  
B) CODE NO. 7302

# DR. OH'S SIMPLE BONE TACK

## Feature

- High strength and wide (mushroom head type) tacks ensure efficient and stable membrane fixation.
- The tack applicator tool holds the tack firmly for efficient application.
- This kit includes a tool for easy and low trauma tack removal.
- ✓ The tack applicator features a contra angle for easier access in the oral cavity.
- ✓ High quality mini kit includes applicator, removal tool and tacks.



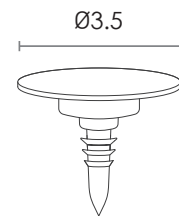
7301  
A TYPE : 5EA

7302  
B TYPE : 15EA

## Direction for use



Actual size **A** & **B**



## COMPONENT



COMPLEMENT KIT

**A**  **×** 5EA  
GBT-35

**B**  **×** 15EA  
GBT-35

**A type** : 1. Tack Holder / 2. Tack removal tool / 3. Tacks x 5 (Ø3.5 x 3mm)

**B type** : 1. Tack Holder / 2. Tack removal tool / 3. Tacks x 15 (Ø3.5 x 3mm)

1. Tack Holder: Device holds the tack for application with a mallet.
2. Tack Remover: Dedicated device used to remove the Tack.
3. Bone Tack : Used to fix shield.



CODE NO. 5365

Dr. Oh Sang Yun

DR. COLLECTION  
OH SANG YUN



EASY SERIES

# DR. OH'S EASY ADVANCED T.P SET

## Feature

- Suitable for all cases.
- Optimized for safe soft tissue manipulation and suturing.
- 60% less expensive than the products of German and US manufacturers with equivalent quality.

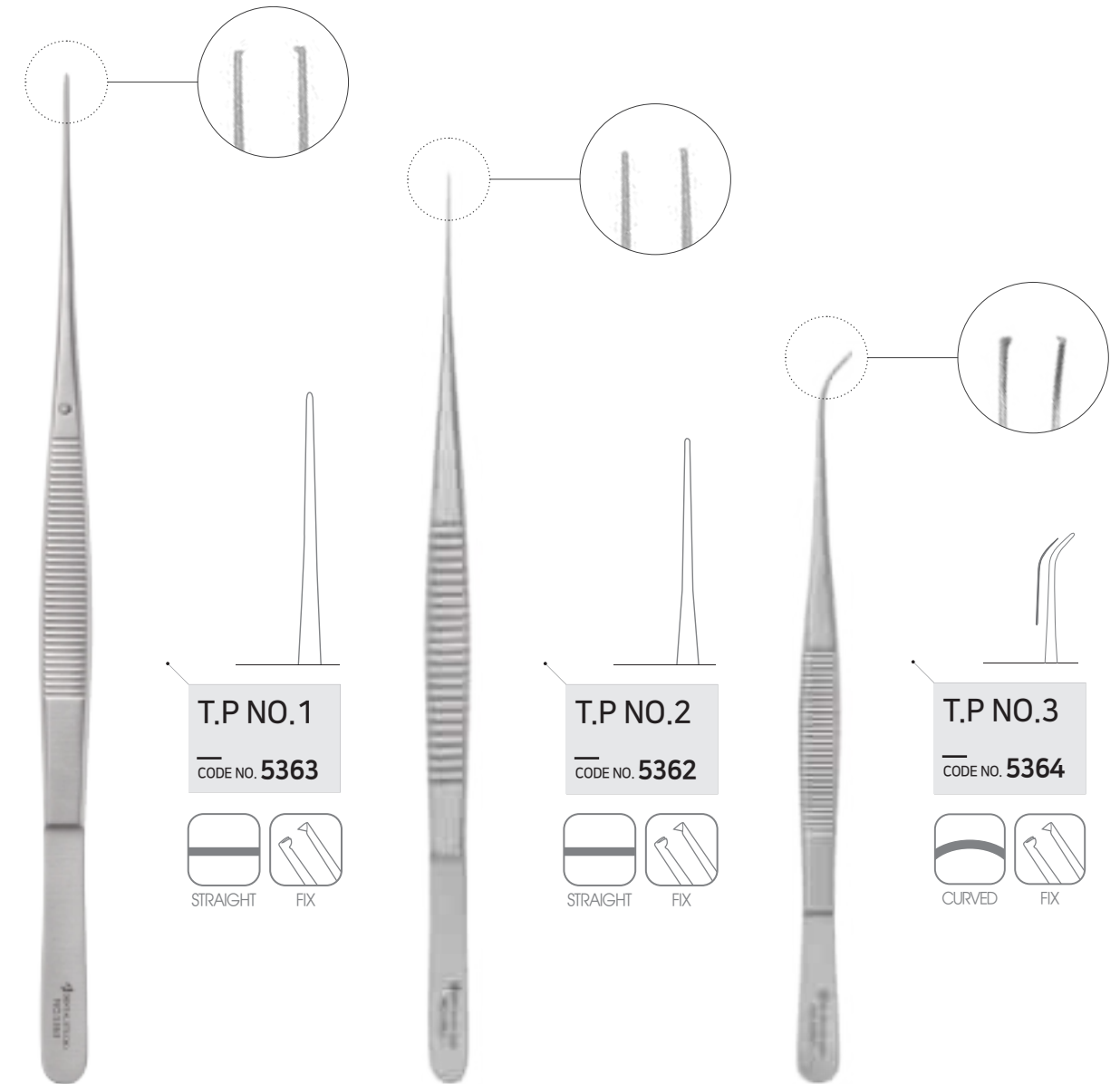
- ✓ T.P NO.1 : Features a large tip to catch thicker, soft tissue.
- ✓ T.P NO.2 : Features a small tip to catch thin, soft tissue.
- ✓ T.P NO.3 : Features an angled tip to assist access in challenged or small mouth openings.

## Direction for use

### ■ CASE 1



### ■ CASE 2







DR. COLLECTION  
HYUN YOUNG KEUN

CODE NO. 7050P

Dr. Hyun Young Keun



# DR. HYUN'S PIN GUIDE

## Feature

- Assist implant placement by marking the ideal insertion and angulation in a safe and accurate way.
- Removes the visual obstruction associated with surgical guides.
- Delivers the accuracy of a surgical guide without the additional time and costs.
- Easy to use.

## Direction for use



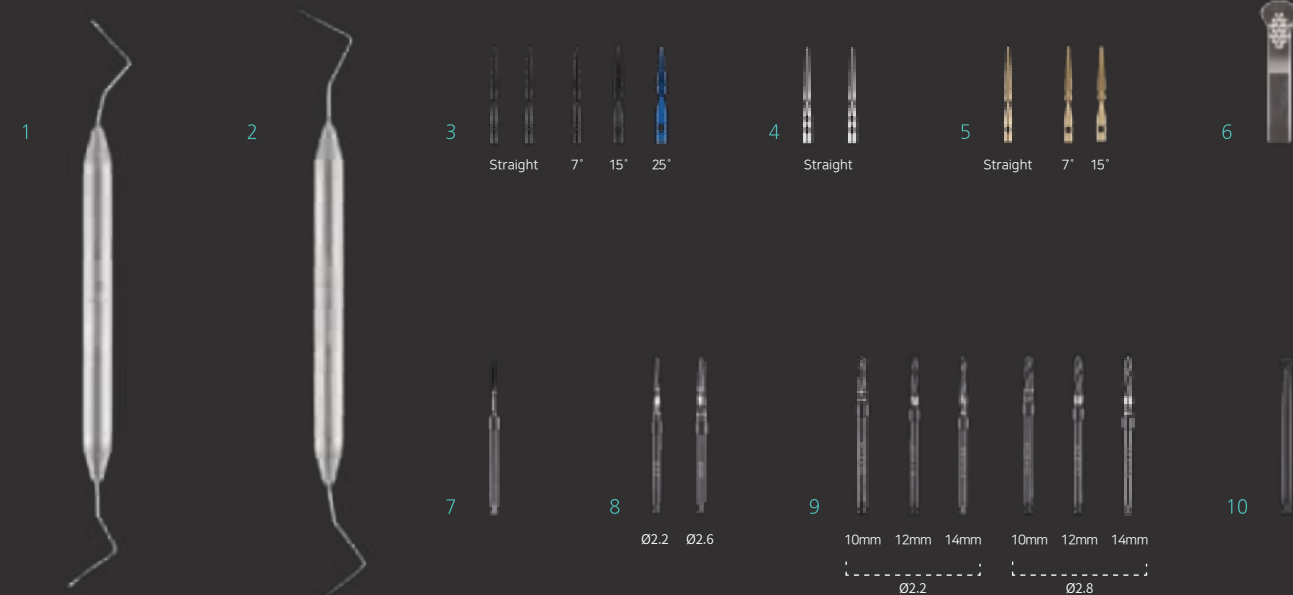
### CASE 1



### CASE 2



## COMPONENT



1. Blade Marker : Blade Marker: Marks the position of insertion in the buccal and lingual sides of the alveolar bone.
2. Point Marker: Use after blade marker to ensure correct access for the pin.
3. Straight PIN : Is inserted into through the buccal side of the mucosa between the bone and periosteum following the ideal line of implant insertion.  
-Three types: Straight, 7, 15 and 25 degrees
4. Narrow PIN : Is inserted into lingual or palatal side of the mucosa into the mucous membrane following the ideal line of implant insertion.
5. Wide PIN : Replaces the straight pin is mobility in the mucous membrane is detected.  
-Two types: Straight, 7 and 15 degrees
6. Holder : Securely holds the pins for easy insertion.
7. Point drill : The initial drill is placed centrally between two pins.
8. Lindeman drill : It is used to change the position of the osteotomy.  
-Two diameters: Ø2.2 and Ø2.6mm.
9. Cutting drill : Used to create the osteotomy.  
-Two diameters: Ø2.2 and Ø2.8mm in 10, 12 and 14mm lengths.
10. Round drill : Is used after implant placement to create crestal bone space for the healing abutment.

# BONE COLLECTOR

OSBC Kit A, B Oneself Bone Collector Kit

## Feature

- Safely collect up to 1cc of autogenous bone in less than 10 seconds.
- Each bone collector is used in conjunction with a safety drill stopper allowing bone collection up to 4mm.
- The drill design minimizes bone heating even at speeds of 300 RPM+ when used with irrigation.
- Can be used safely without irrigation at 50 RPM.

- ✓ Special drill and silicone stopper system allow shake-free drilling.
- ✓ Design minimizes bone loss whilst collecting up to 30% more bone compared to alternatives.
- ✓ Reusable for increased efficiency and economy.

Available in four widths and two types depending upon the stopper:



CODE NO. 6500-A  
CODE NO. 6500-B

## COMPONENT

**A**

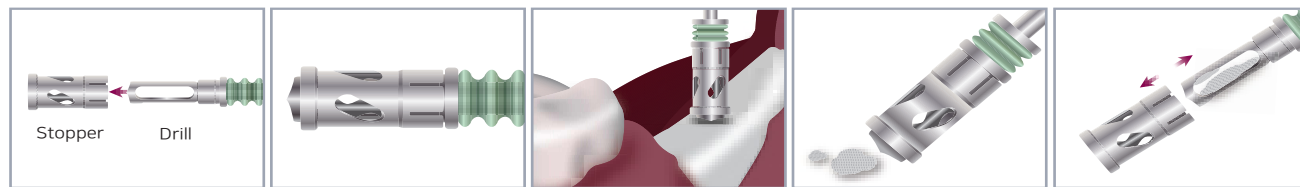


**B**

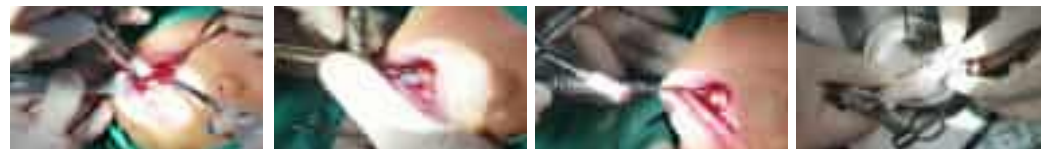


1. Collector Drill : Ø4, Ø5, Ø6, Ø7  
-Collect the bone inside the drill. [Recommended RPM 500 - 1000]
2. Stopper : Ø4, Ø5, Ø6, Ø7  
-Type A features a Stainless-steel stopper and Type B a Peek stopper.

## Direction for use



### CASE 1



### CASE 2



# EASY IMPLANT GUIDE KIT

## Feature

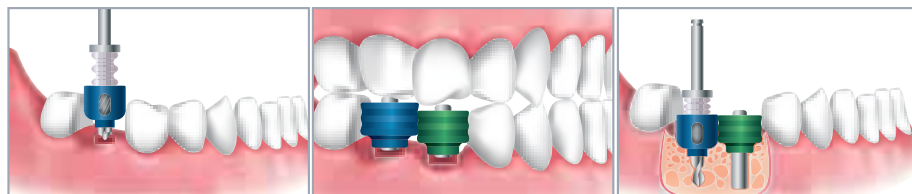
- Ensures accurate freehand implant depth drilling with simultaneous crown width orientation.
- Avoid implant spacing errors when placing adjacent implants.
- Surgery time can be shortened and possibility of Saves time and improves implant success.

- ✓ High quality allows compared to alternatives.
- ✓ Efficient mini kit includes all essential components.
- ✓ Colour coding allows simple and intuitive use.

CODE NO. **7350-A**  
CODE NO. **7350-B**



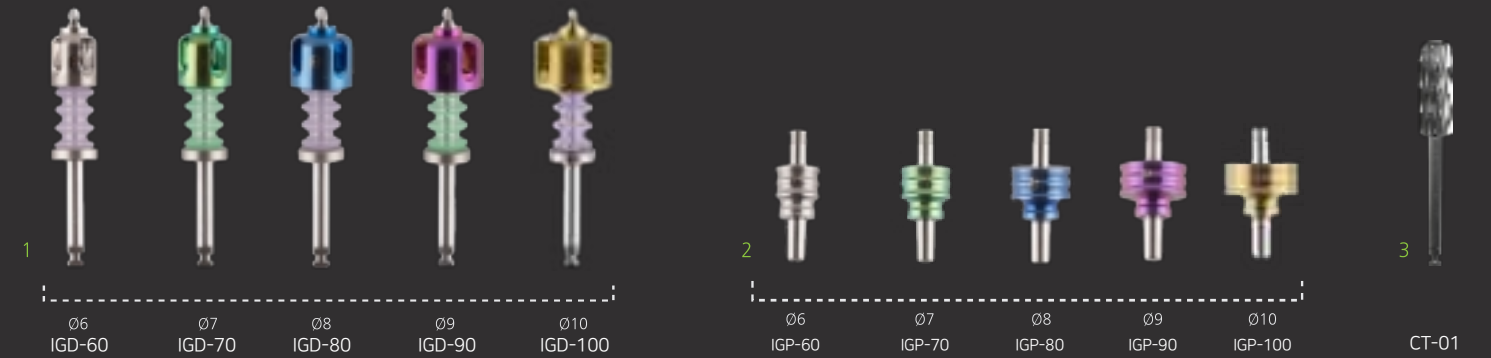
## Direction for use



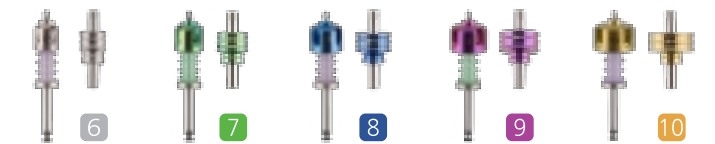
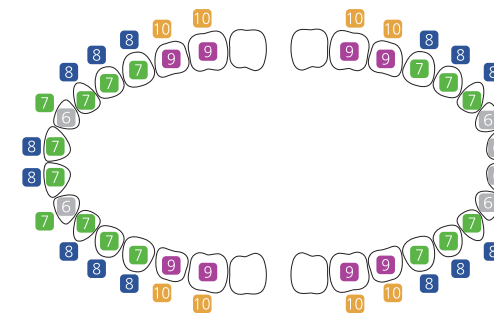
### ■ CASE 1



## COMPONENT



1. Crown Guide Drill with incorporated spacers. Ø6, 7, 8, 9 and 10mm.  
Guides optimal positioning in respect of the final implant born prosthetic crown. Colour coded to match crown location.
2. Crown Guide Pin: Ø6, 7, 8, 9, 10mm. Type A has one of each size, Type B has two for multiple implant cases.  
Allows optimal spacing, parallelism occlusal checks when multiple implants are placed. Colour coded to match crown location.
3. Crest Trimmer: Used for flattening narrow or thin alveolar bone.





# IMPLANT & SCREW REMOVER KIT (S)

## Feature

CODE NO. 7051

- Includes multiple options to allow easy and safe abutment screw or implant removal.

- ✓ The only kit needed for removal of all broken or damaged abutment screws or implants.
- ✓ Suitable for a wide variety of manufacturers and connection types.
- ✓ Protects the internal implant thread when removing broken abutment screws.



## Direction for use

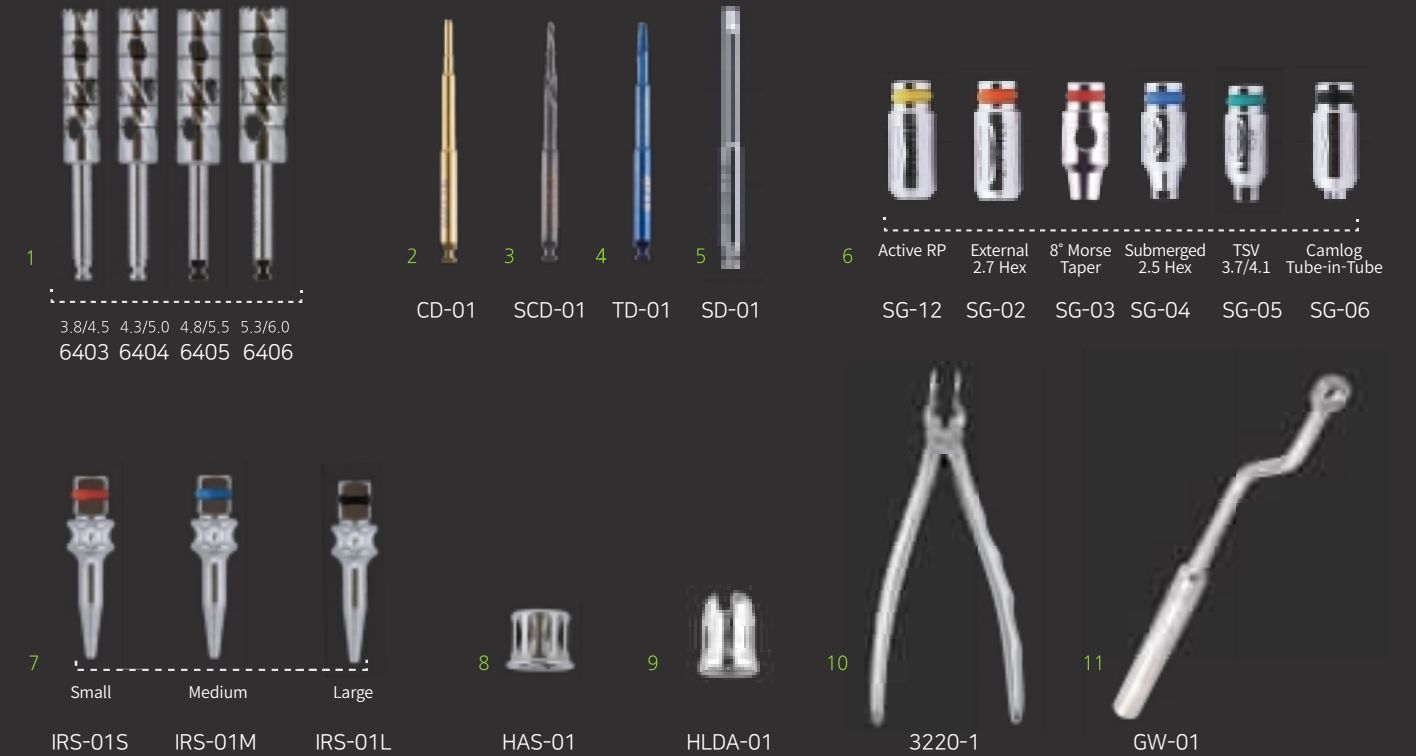
### ■ CASE 1



### ■ CASE 2



## COMPONENT



- Trephine Bur : [3.8/4.5], [4.3/5.0], [4.8/5.5], [5.3/6.0]. When attached to the handpiece trephine burs allow complete removal of an implant when low trauma internal contact removal is unsuccessful.
- Claw Driver: Is used counterclockwise in the handpiece to engage damaged or broken abutment screws through contact friction.
- Screw Drill: Use at 1500 to 2000RPM counterclockwise through the screw guide (6) if removal of a broken screw is not possible with the claw driver.
- Tap Driver: Used after the Screw Drill (3) counterclockwise to engage the broke abutment screw.
- Slot Driver (0.7): An alternative method to engage broken abutment screws. Use counterclockwise.
- Screw Guide: Use with Screw Drill (3) to protect the internal implant thread when drilling a pilot hole in the broken screw. Six types designed to match various internal implant connections. Active RP, External 2.7 Hex, 8° Morse Taper, Submerged 2.5 Hex, TSV 3.7/4.1, Camlog.
- Implant Removal Taps: Engages the implant for removal by low trauma internal means. Connect to ratchet and use counterclockwise. Three diameters.
- Hand Adapter (Straumann type): Allows use of the internal implant removal tools with the Straumann type ratchet.
- Driver Hand Adapter (Straumann type): Used for connecting internal implant removal tools to hand driver.
- Implant Forceps: The first-choice method for quick and simple implant removal.
- Guide Wrench: Used for fixing the screw guide (6) to the implant.

# IMPLANT REMOVER KIT (S)



CODE NO. 7041

## Feature

- Options for internal (low trauma) and external removal of broken implants.
- The trephine burs are equipped with guides to reduce bone losses.
- Implant removal forceps - the first-choice method for implant removal.

- ✓ Allows low trauma removal of failed or broken implant through internal engagement.
- ✓ Accurate drilling and reduced chair time.
- ✓ Atraumatic extraction minimized bone loss.
- ✓ Eliminates fracture risk.



Top view

## Direction for use

### ■ CASE 1



### ■ CASE 2



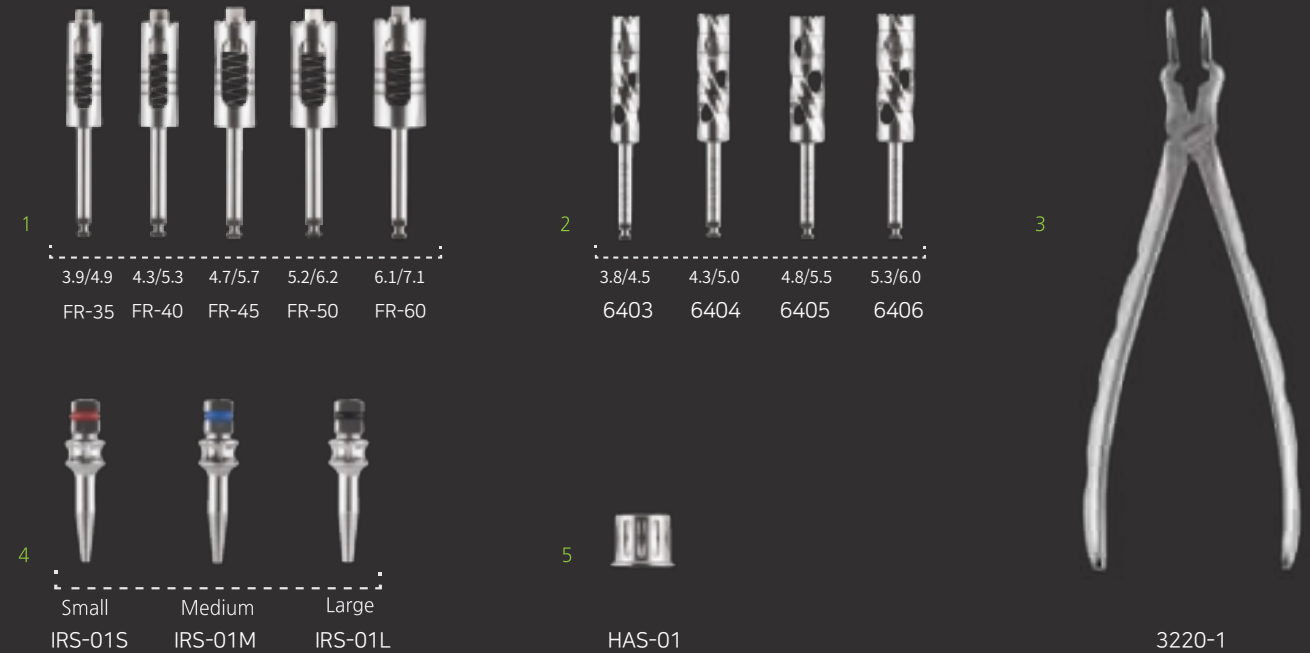
### ■ CASE 3



## COMPONENT

The more you see, the more you like.

Simple and sensible style of IMPLANT REMOVER KIT by Dental Studio



1. Easy Removers: [3.9/4.9], [4.3/5.3], [4.7/5.7], [5.2/6.2], [6.1/7.1] – Used of low trauma internal connection removal of the implant in conjunction with the guide tap (4).
2. Trephine Burrs: [3.8/4.5], [4.3/5.0], [4.8/5.5], [5.3/6.0] - Used with handpiece to remove implant when internal connection is not possible.
3. Implant Forceps: The first-choice method for quick and simple implant removal.
4. Implant Removal Taps: Engages the implant for removal by low trauma internal connection. Connect to ratchet and use counterclockwise. Three diameters.
5. Hand Adapter: Allows use of the internal implant removal tools with the Straumann type ratchet.



# IMPLANT REMOVER KIT

## Feature

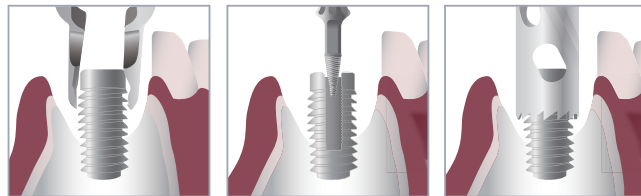
CODE NO. 7040

- Simple kit allows for removal of common implant sizes.
- Inclusion of forceps and internal implant taps facilitate low trauma removal.

- ✓ Implant forceps.
- ✓ Internal tap removal tools.
- ✓ Trepine Burrs in optimal sizes.



## Direction for use



Implant Forcep CASE    Implant Remover CASE    Trepine CASE

### ■ CASE 1



### ■ CASE 2



## COMPONENT

The more you see, the more you like.

*Simple and sensible style of IMPLANT REMOVER KIT by Dental Studio*



1. Trepine Burrs: 3.8/4.5, 4.3/5.0, 4.8/5.5, 5.3/6.0 - Used with handpiece to remove implant when internal method is not possible.
2. Implant Removal Taps: Engages the implant for removal by low trauma internal connection. Connect to ratchet and use counterclockwise. Three diameters.
3. Hand Adapter: Allows use of the internal implant removal tools with the Straumann type ratchet.
4. Implant Forceps: The first-choice method for quick and simple implant removal.

# SIMPLE SCREW REMOVER KIT

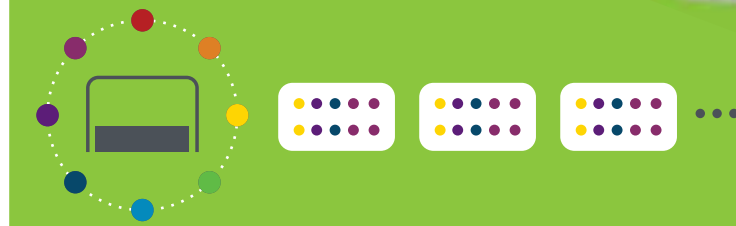
## Feature

CODE NO. 7052

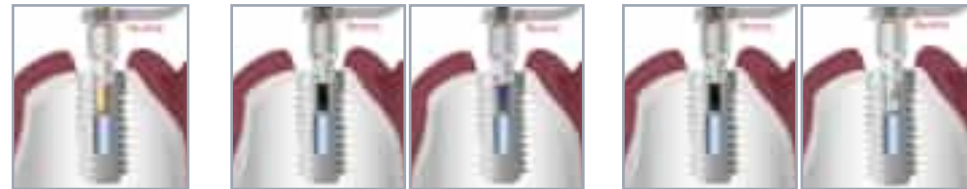
- Used for simple removal of broken abutment screw from inside the implant.
- ✓ Economic - Includes only essential components.
- ✓ Simplicity - For efficient operation.



## CUSTOMIZED ORDER



## Direction for use

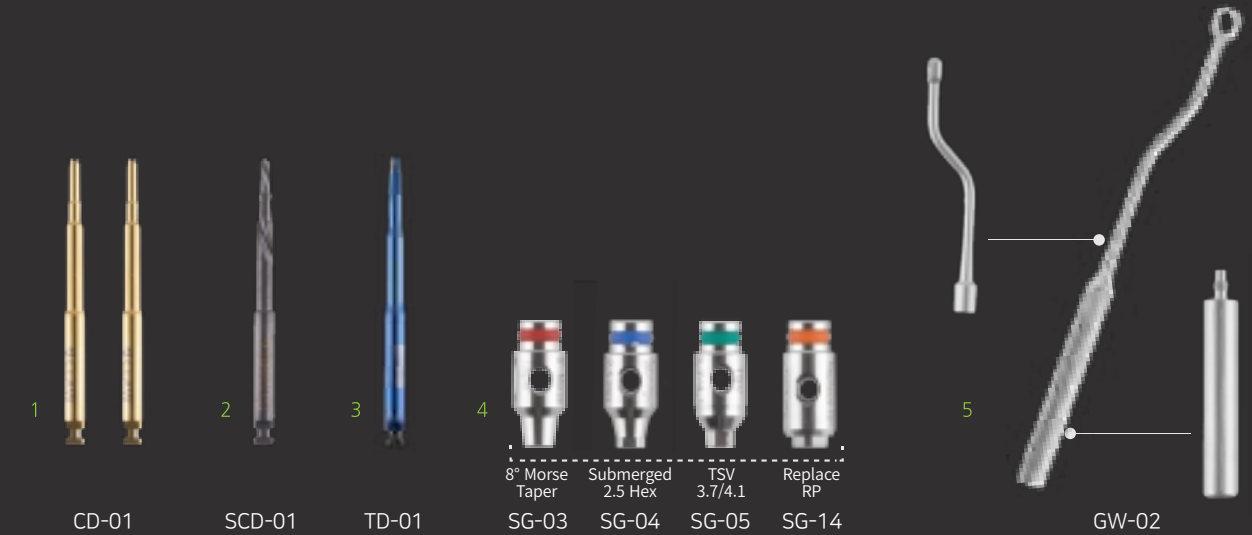


Claw Driver CASE      Screw Drill -> Top Driver CASE      Screw Drill -> 0.7 Slot Driver CASE



## COMPONENT

Reduce your burden in the price. *Mini Screw Remover Kit* where the essential functions and assured empirical technologies are accumulated.



1. Claw Driver : Use counterclockwise in the handpiece to engage damaged or broken abutment screws through contact friction.
2. Screw Drill : Use at 1500 to 2000RPM counterclockwise through the screw guide (4) if removal of a broken screw is not possible with the claw driver.
3. Tap Driver : Used after the Screw Drill (2) counterclockwise to engage the broke abutment screw.
4. Screw Guide : Use with Screw Drill (2) to protect the internal implant thread when drilling a pilot hole in the broken screw. Four types to match common internal implant connections. 8° Morse Taper, Internal Hex 2.5mm, Hex, TSV 3.7/4.1, Replace RP.
5. Guide Wrench : Used for fixing the screw guide (4) to the implant.

# SINUS COMBINATION KIT (S)

## SINUS CRESTAL & LATERAL KIT

CODE NO. 7110S

### Feature

- All tools to complete sinus augmentation procedures using either the crestal or lateral approaches.
  - Quick and Efficient and eliminates more complex lateral wall procedures.
  - Most cases can be completed with one spring drill.
- ✓ Unique reamers create access without trauma to the Schneiderian Membrane.
  - ✓ Includes Aqua lift components for safe crestal lifting of the Schneiderian Membrane.
  - ✓ Multiple Sinus Curettes allow safe elevation of the Schneiderian Membrane in lateral approaches.



### Direction for use

#### ■ CASE 1



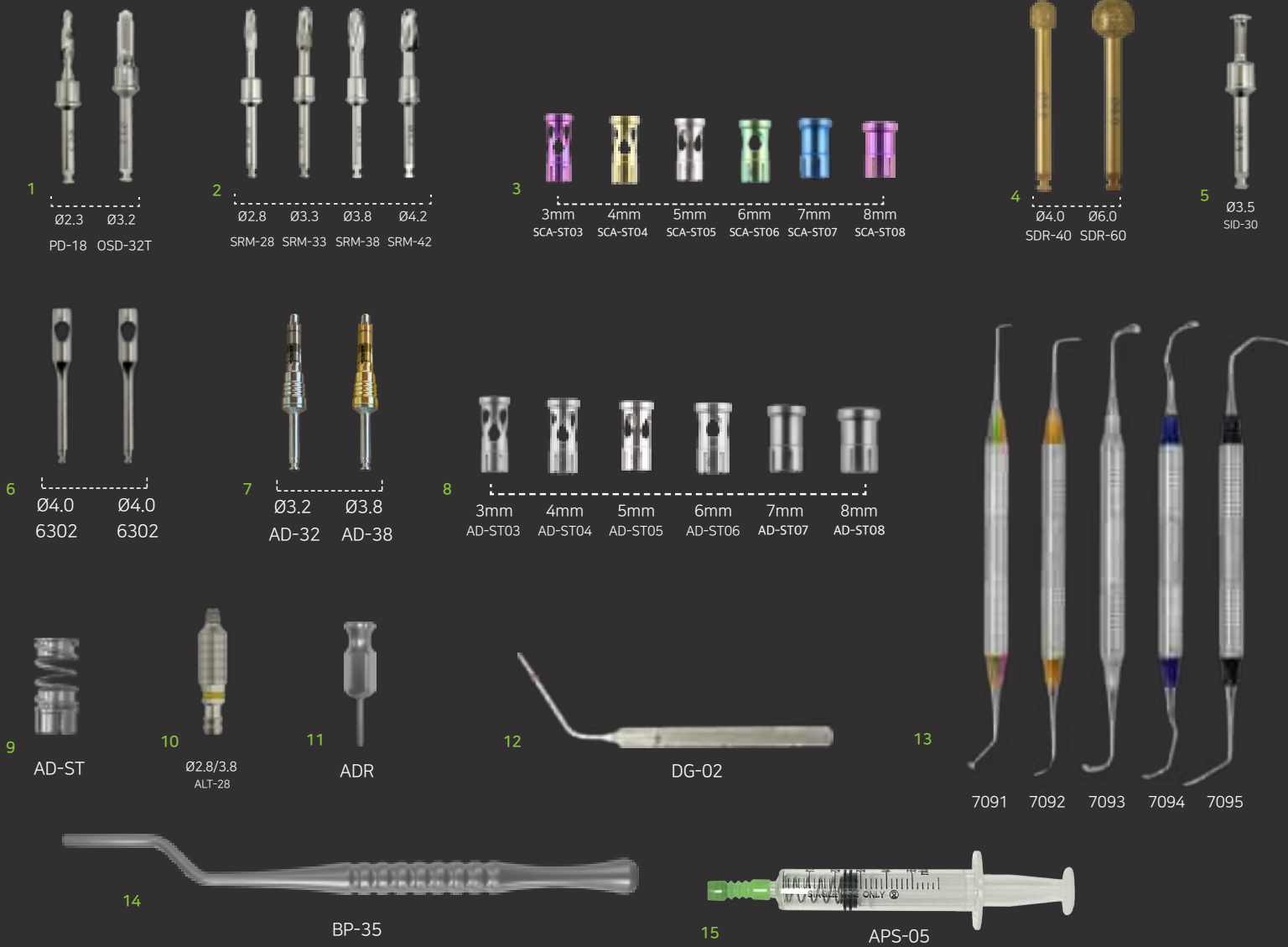
#### ■ CASE 2



#### ■ CASE 3



## COMPONENT



1. Initial Drill : Ø2.3 / Ø3.2    2. Sinus Reamer : Ø2.8, Ø3.3, Ø3.8, Ø4.2    3. Stopper : 3~8mm [6EA]    4. Diamond Reamer : Ø4.0 / Ø6.0    5. Side Cutter
6. Tissue Punch : Ø4.0 [2EA]    7. Aero Drill : Ø2.8 / Ø3.2    8. Aero Drill Stopper : 3~8mm [6EA]    9. Spiring Stopper
10. Aqua Tip : Ø2.8/Ø3.8    11. Aero Drill Ræmover    12. Depth Gauge    13. SinusCurets : 5 options with    14. Bone Pusher    15. Aqua Pump Syringe



# SINUS COMBINATION KIT

## SINUS CRESTAL & LATERAL KIT

CODE NO. 7110

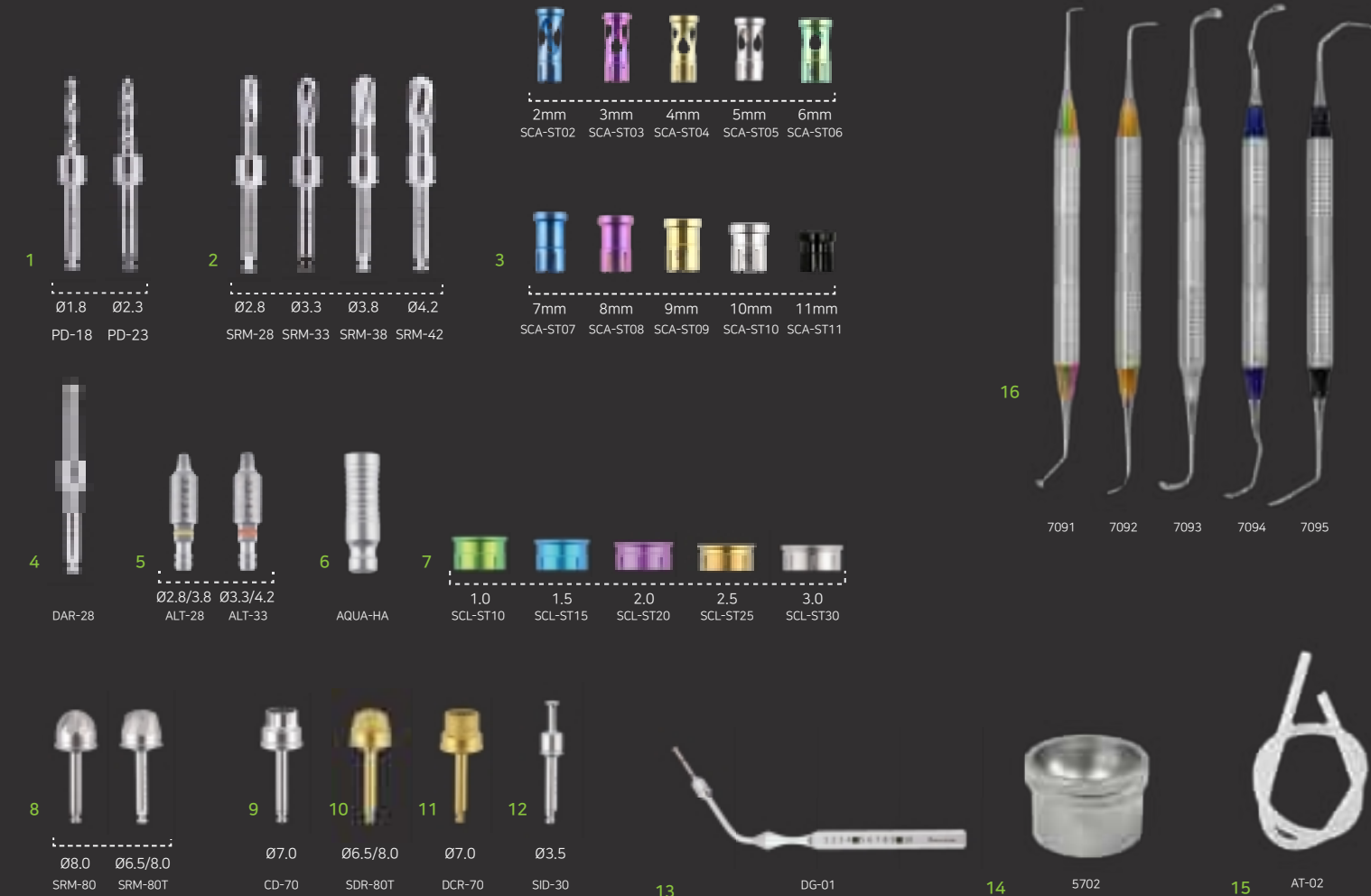
### Feature

- All tools to complete sinus augmentation procedures using either the crestal or lateral approaches.

- Unique reamers create access without trauma to the Schneiderian Membrane.
- Includes Aqua lift components for safe crestal lifting of the Schneiderian Membrane.
- Multiple Sinus Currettes allow safe elevation of the Schneiderian Membrane in lateral approaches.



### COMPONENT



### Direction for use

#### CASE 1



#### CASE 2



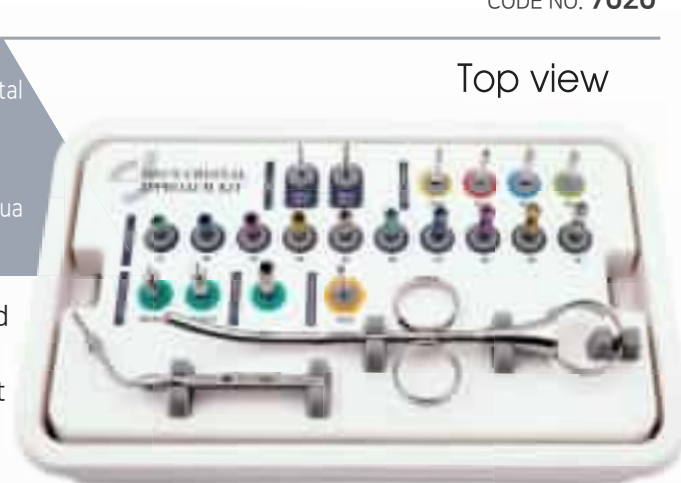
1. Crestal Initial Drill : Ø1.8, Ø2.3    2. Crestal Reamer : Ø2.8, Ø3.3, Ø3.8, Ø4.2    3. Crestal Stopper[10ea] : 2~11mm    4. Crestal Diamond Bur : Ø2.8  
 5. Crestal Aqua Lift : Ø2.8/3.8, Ø3.3/4.2    6. Aqua Hand Adapter    7. Lateral Stopper : 1.0, 1.5, 2.0, 2.5, 3.0[5EA]    8. Lateral Reamer : Ø8.0, Ø6.5/Ø8.0  
 9. Lateral Core Drill : Ø7.0    10. Lateral Diamond Reamer : Ø6.5/Ø8.0    11. Lateral Diamond Core Reamer : Ø7.0    12. Lateral Side Drill : Ø3.5  
 13. Depth Gauge    14. Bone graft dish    15. Silicone tubing for aqua lift    16. Sinus Currettes : 5 options with

# SINUS CRESTAL APPROACH KIT

## Feature

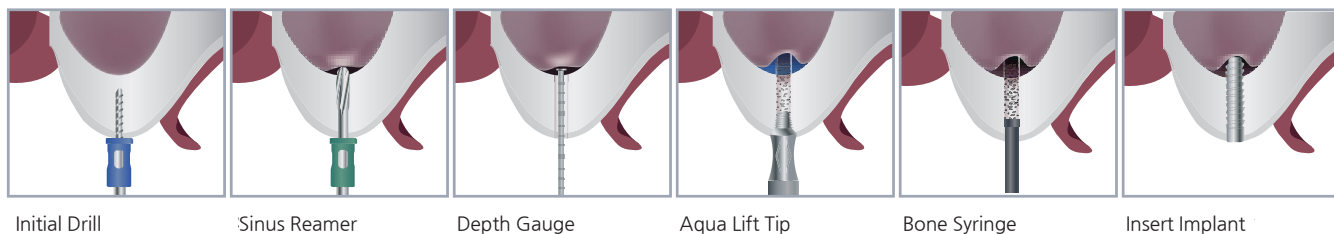
CODE NO. 7020

- Safely separate and elevate the sinus membrane using the crestal approach.
- Contains sinus bone reamer and diamond bur for safe sinus access.
- Safely elevate the schneiderian membrane using 'non-contact' aqua tip.
- ✓ Includes four specially designed reamers and diamond burs with drill stoppers for precise and safe access.
- ✓ Sinus elevation is completed safely using the aqua lift tools.
- ✓ For a fast and safe crestal sinus lift and bone graft application.



Top view

## Direction for use



### ■ CASE 1



# SINUS LATERAL APPROACH KIT

## Feature

CODE NO. 7090

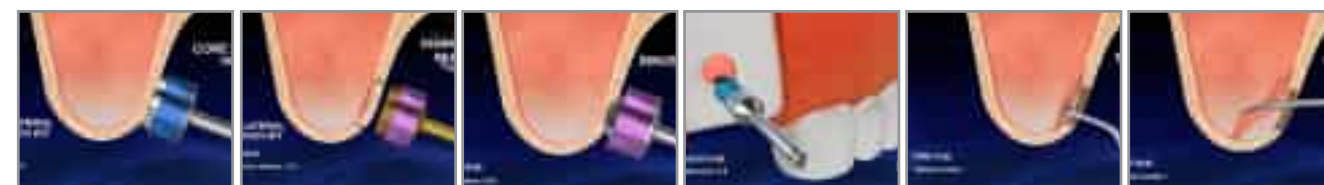
- All tools to complete a lateral access sinus lift procedure.
- Diamond drills and reamers with drill stoppers enable safe and efficient creation of the lateral window.
- ✓ Multiple size diamond reamers.
- ✓ Unique design for safe and efficient surgery.
- ✓ Includes five curettes matching all needs. (lowertray)



Top view

## Direction for use

### ■ CASE 1



### ■ CASE 2



### ■ CASE 3





# SIMPLE SINUS REAMER KIT

## SIMPLE SINUS CRESTAL REAMER KIT

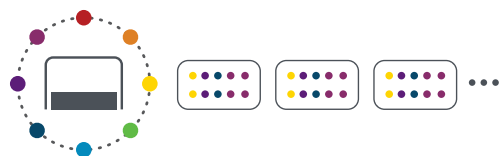
- Simple and economic set includes diamond reamers and drill stoppers dedicated to crestal approach surgery.



CODE NO. 7085

- ✓ An economic mini kit includes essential components.

CUSTOMIZE: Option to customize the stopper set.



...

- SRM :SINUS REAMER (Ø2.8, Ø3.3, Ø3.8, Ø4.2 / 4ea)
- SCA-ST:STOPPER SET(4mm~8mm / 5ea)
- DAR-28:DIAMOND BUR Ø2.8

## SIMPLE SINUS LATERAL REAMER KIT

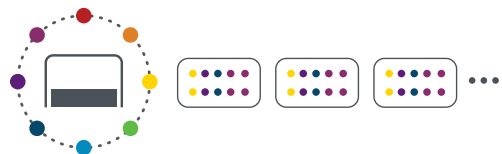
- Simple and economic set includes diamond reamers and drill stoppers dedicated to lateral window approach.



CODE NO. 7120

- ✓ An economic mini kit includes essential components.

CUSTOMIZE: Option to customize the stopper set



...

- SRM-80 : Sinus Reamer Ø8.0    • SRM-80T : Sinus Reamer Ø6.5 / Ø8.0
- SDR-80T : Sinus Diamond Reamer Ø6.5 / Ø8.0    • SID-30 : Side drill Ø3.5
- DCR-70 : Diamond Core Reamer Ø7.0    • SCL-ST : Stopper Set(1.0~3.0mm 5ea)

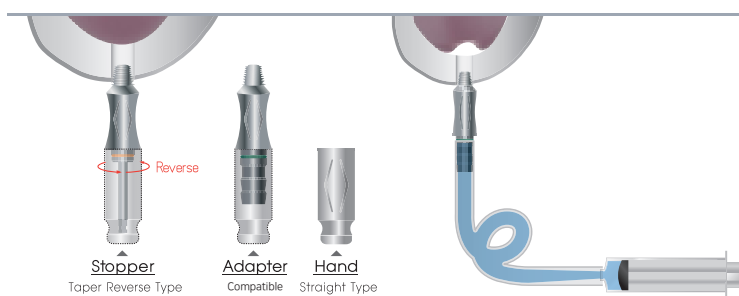
# AQUA SINUS LIFT KIT

## Feature

- Elevation of the schneiderian membrane is completed safely using 'non-contact' aqua tip.
- Aqua tip uses water pressure to elevate the lining eliminating the risk of contact rupture.
- Accurate interlocking components prevents water leakage during application.

- ✓ Safe serration on the sinus membrane using water pressure.
- ✓ Choice of aqua tips ensure compatibility with all sinus drill.
- ✓ Efficient Aqua tip design prevents water leakage.

## Direction for use



## ■ CASE 1



CODE NO. 7100

## Top view



## COMPONENT



1. Aqua Tip [Taper Type] : Ø2.3/3.8, Ø3.3/4.2
2. Aqua Tip [Straight Type] : Ø3.2/3.5, Ø3.7/4.0, Ø4.2/4.5
3. Aqua Hand Adapter
4. Silicone Tube

# BONE EXPANDER KIT

## Feature

- Reverse threaded bone expanding drills.
- Includes adapter for Straumann driver.
- Can be used with motor or ratchet.

- ✓ Five reverse threaded bone
- ✓ Bone trimmer
- ✓ Bone saw Compact Size

Basic A TYPE 7031-1 & Master B TYPE 7031-2

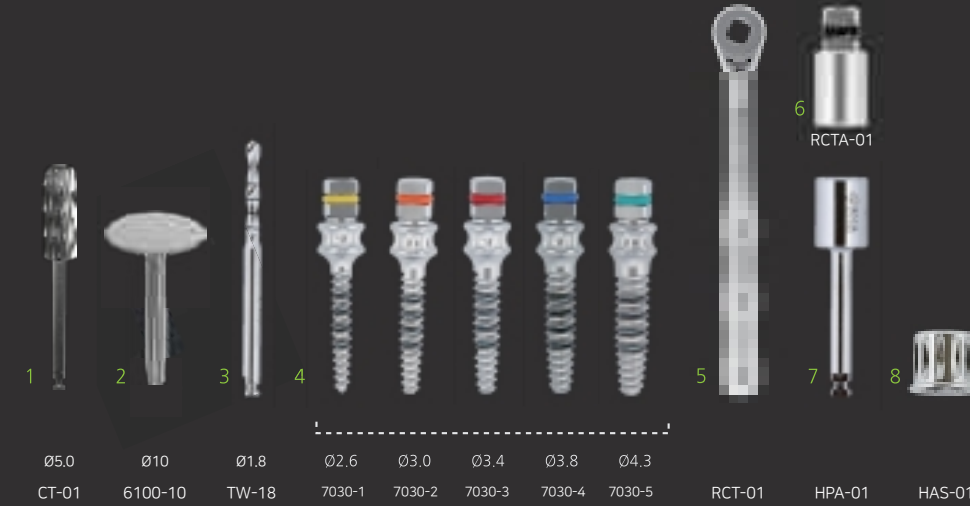
CODE NO. 7030  
CODE NO. 7031-1  
CODE NO. 7031-2

Top view



## COMPONENT

A variety of tools by Dental Studio ensure Quicker and Safer surgery.

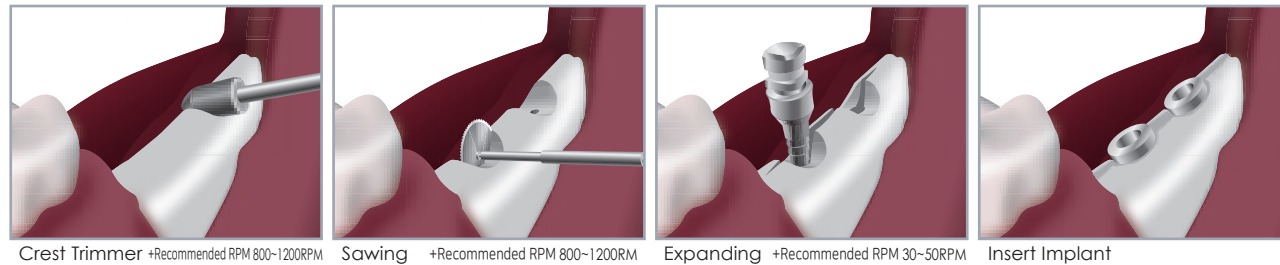


+  
COMPLEMENT KIT



CODE NO. 4801 CODE NO. 4802

## Direction for use



1. Crest Trimmer : Used for trimming and flattening the narrow or thin crestal bone.
  2. Saw Ø10 : Used for part splitting crestal bone. (Thickness 0.3mm, Diameter 9.8mm)
  3. Pilot Drill: Creates initial osteotomy to allow insertion of expansion drills.
  4. Expander : Use sequentially to expand the bone width before implant placement.
  5. Ratchet : Used in conjunction with the expanding drills.
  6. Ratchet Adapter : Extends the reach of the ratchet and expander drills.
  7. Handpiece Adapter :Allows the expander drills to be used with the implant motor.  
[Recommended 30~50RPM]
  8. Hand/Strauman Adapter : Allows the expander drills to be used by hand or in conjunction with a Straumann type
- \* TYPE A includes all tools for bone expansion. TYPE B includes the addition of two premium bone expansion tools.

# INCISOR & SEPTUM TRIMMER KIT **UPGRADE**

## Feature

- Suitable for anterior or posterior implant placement.
- Ensures optimal implant alignment.
- Includes a selection of drills matched to surgeons' preference.

✓ Overcome challenging bone to ensure perfect post extraction implant alignment.

CODE NO. 7250

Top view

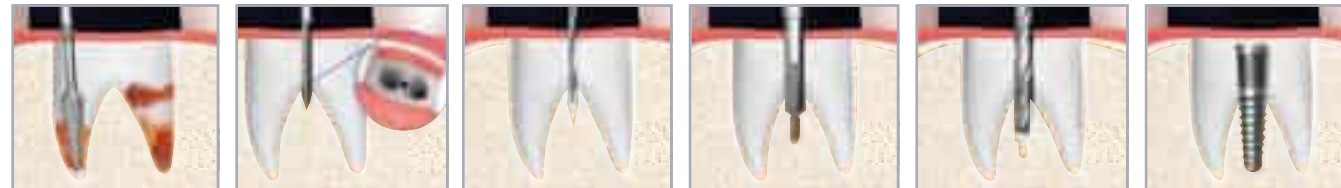


## Direction for use

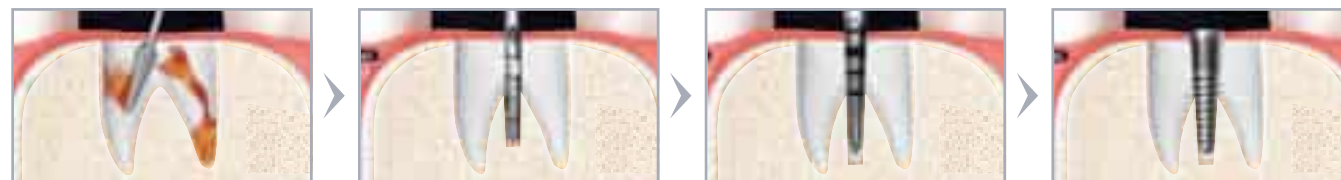
### INCISOR



### SEPTUM-1



### SEPTUM-2



## COMPONENT



1. **Point Drill Ø1.3** : A function that slightly enlarges the drilling site formed by the micro saw drill to prevent the next step drill from leaving the cancellous bone.
2. **Lindemann Drill Ø2.0** : Performing initial side cutting drilling prevents the end cutting drill in the next step from getting caught in the cortical bone of the side wall, resulting in incomplete site preparation.
3. **Twist Drill Ø2.0** : Ensures accurate drilling to the desired implant depth.
4. **Pilot Drill Ø2.0/3.0** : Use after the Point drill.
5. **Guide Pin Ø2.0/3.0** : Allows accurate depth and alignment checking.
6. **Diamond Reamer Ø1.2/2.0** : Alternative design removes bone fragments and granulation tissue.
7. **Diamond Bar Ø3.0** : Easily remove bone fragments and granulation tissue that will otherwise delay bone healing.
8. **Trephine Bur Ø2.3/3.0** : Use to remove bone from the septum ahead of implant placement.
9. **Expander Ø2.4/3.4** : Use after Point and Twist Drills to expand bone ahead of implant placement.
10. **Micro Saw Drill Ø1.0** : When drilling in a narrow alveolar ridge, it allows easy penetration into the narrow cancellous bone between the hard buccal and lingual cortical bones.



# TITANIUM BRUSH

## Feature

- NiTi brushes for management of peri-implant infected sites.
- Use the NiTi brush to remove plaque, calculus, cement, and other foreign materials from the compromised implant site.
- Use the flame bur to prepare the exposed implant threads.
- -sub-gingival insertion can be done due to the special design of the flame bur.

CODE NO. **6350-A**  
CODE NO. **6350-B**



Top view

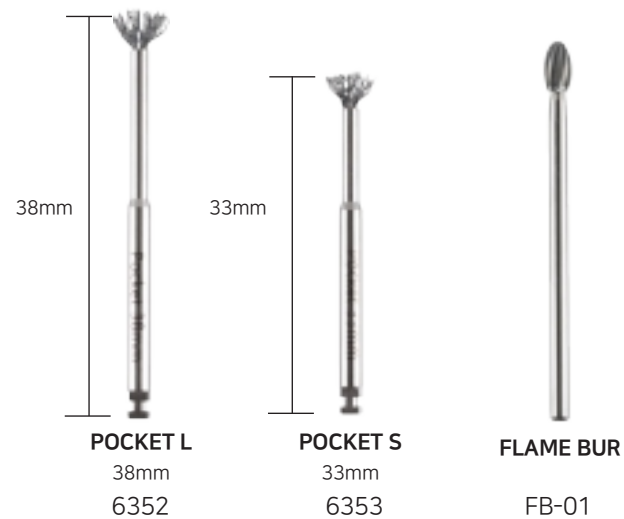
6350-B  
**B**

6350-A  
**A**

- ✓ Special design minimizes damage to the implant surface.
- ✓ Optimised for easy access.
- ✓ Efficiently remove peri-implant debris and prepare the implant for re-treatment.

**A TYPE** & **B TYPE**  
6350-A 6350-B

## COMPONENT



## Direction for use



# EASY SCREW RETRIEVER KIT

## Feature

- Easily remove fractured or broken prosthetic screw.
- Suitable for deeply embedded fixtures.
- ✓ Special serrated tip helps grip fractured screw.
- ✓ Screw removal in less than 1 minute.
- ✓ Kit includes long (15mm) and short 10mm) tools.
- ✓ Economical multi-use kit.

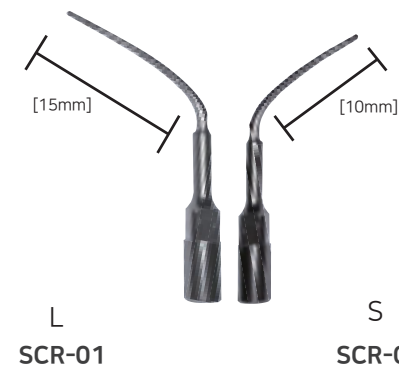
CODE NO. **7400**



Top view



Set(3EA)





# TREPHINE

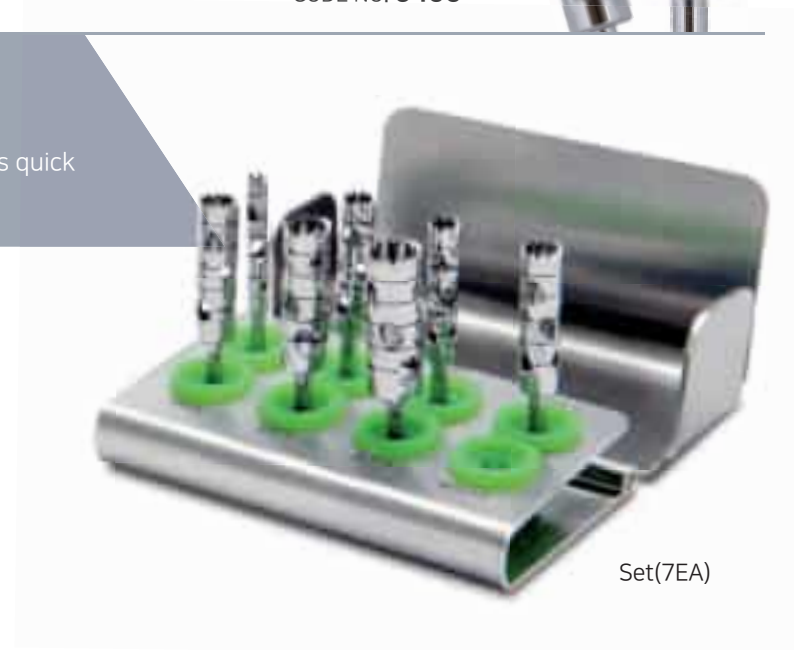
ELI KIT

## Feature

- Multi-use trephine set for implant removal and autogenous bone collection.
- Inclusion of multiple diameter trephines ensures quick removal of almost any width implant.

- ✓ Easy & Fast application
- ✓ Low Bone Heating
- ✓ Ideal Size & Design

CODE NO. 6400



## COMPONENT



# TISSUE PUNCH

## Feature

- Used for removing gingival tissues.
- Minimizes bone loss.

- ✓ Easy & Fast Application
- ✓ Low Bone Heating

CODE NO. 6300



## COMPONENT



1. Access hole allows easy removal of gingival tissue after retrieval.
2. Use tissue punch after guide drill for more accurate trephination.

# DIAMOND BUR

## Feature

- The kit includes a selection of diamond burrs to meet all applications.
- Special diamond pattern developed for efficient cutting.

- ✓ Excellent cutting efficiency.
- ✓ Highly durable design.
- ✓ Multiple head designs to meet all applications.

CODE NO. 7270



## COMPONENT



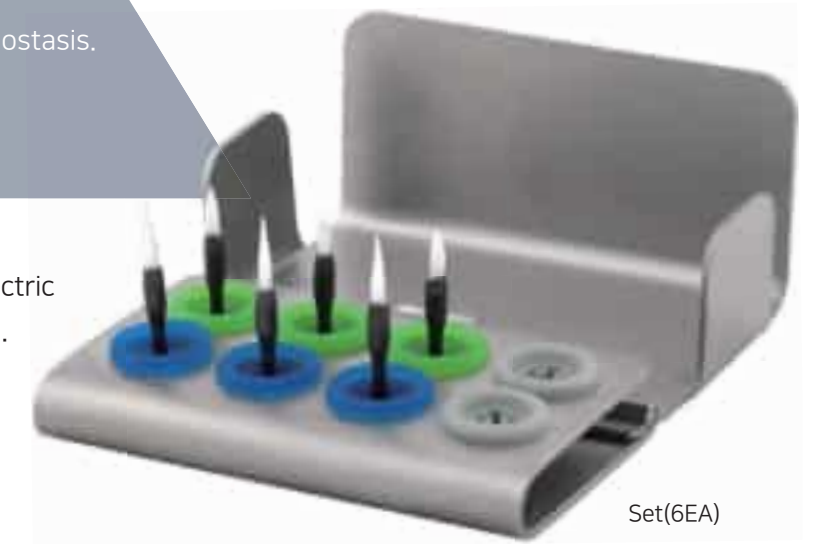
# SOFT TISSUE TRIMMER

## Feature

- Low trauma soft tissue cutting with haemostasis.
- Excellent healing.
- Produced from zirconia ceramic.

- ✓ Quick healing and hemostasis effects
- ✓ Removes the need for a surgical blade or electric scalpel. Bleeding and necrosis risk is reduced.

CODE NO. 6360



## COMPONENT



- We recommend water spray cooling at 150,000-300,000 RMP.



# MESH

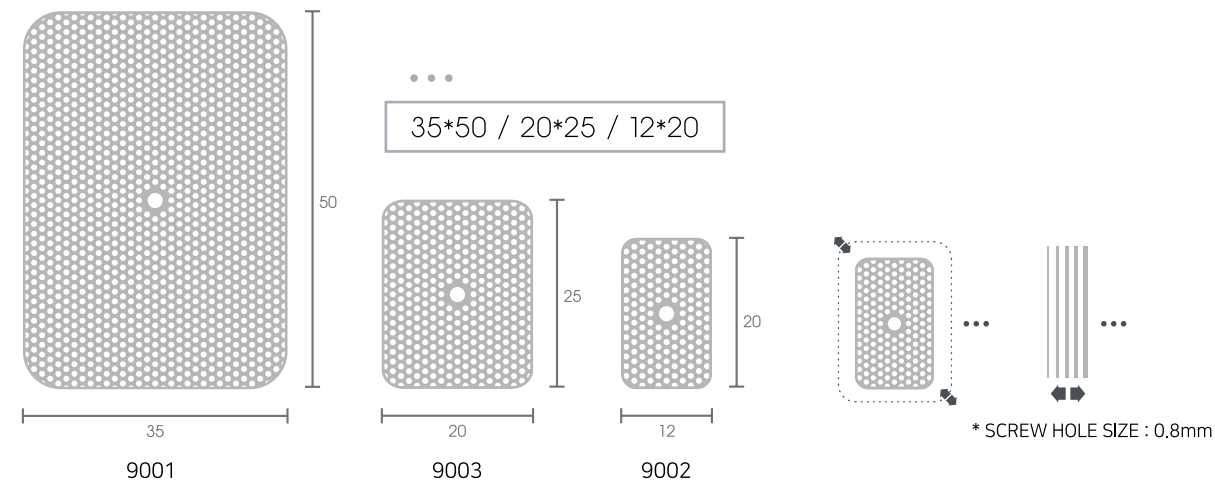
## Feature

- ✓ Thin and flexible for easy application.
- ✓ Easy to cut to your desired size.
- ✓ High strength with pre-cut screw hole.

CODE NO. 9001 / 9003 / 9002



## Actual size



# BONE TRIMMER KIT ↑UPGRADE

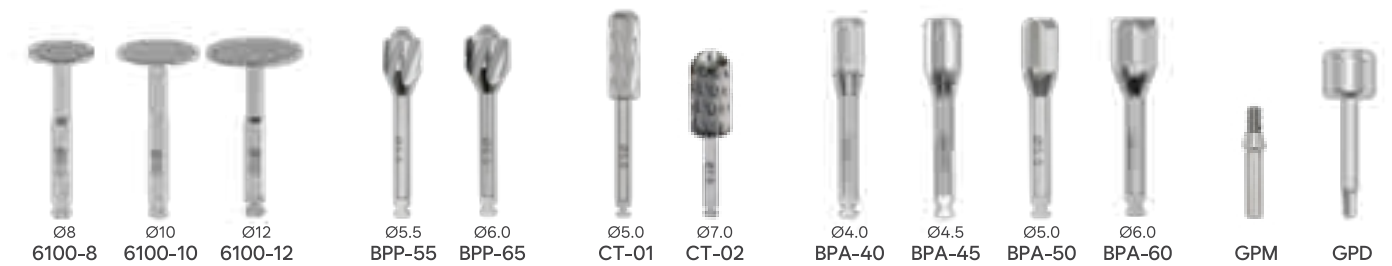
## Feature

CODE NO. 7261

- Thin cutting saw is ideal for thin ridges.
- Composed of various diameters (4.0mm-6.5mm), providing a wide range of options during surgery.
- Achieves drilling with 0.1mm safety gap, preventing fixture damage.
- As a drill that pairs with the guide pin, it allows safe bone removal without damaging the fixture.



Top view



# PRF BOX

## Feature

CODE NO. 7150

- Large capacity tray holds several membranes at one time. Space to separate all components and void cross contamination.

## COMPONENT

1. Mini Tray
2. Tube Holder
3. Case
4. Plastic core [4ea]
5. Plastic core push
6. Press board
7. Lid



## HOW TO USE

- Create blood fraction using appropriate tube and centrifuge.
- Remove PRF gel from tube and separate the yellow portion with a blade or scissors.
- Place the separated yellow portion onto the middle board and compress with board 6.
- Mix the remaining extracted liquid with your chosen bone graft.

# ABUTMENT ALIGNMENT PIN KIT

**AAP KIT** Easy to implant hole size check

## Feature

CODE NO. 7200

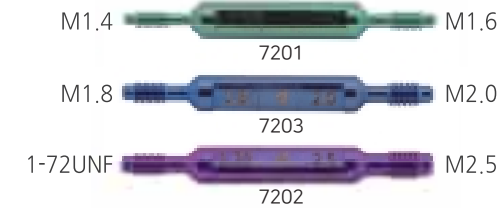
- Check the correct implant alignment.
- Select the abutment angle.
- Check the internal implant thread prior to abutment replacement.

- ✓ Check the internal diameter of any implant.

Top view

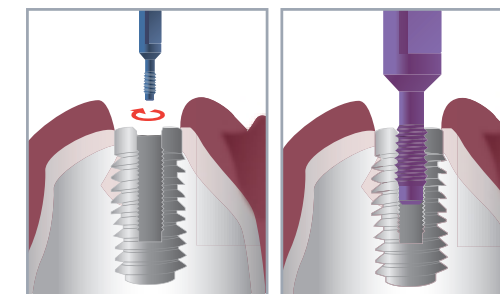


## COMPONENT



...

M1.4/M1.6 M1.8/M2.0 1-72UNF/M2.5



## Direction for use

1. Choose appropriate alignment pin and insert into the implant lumen.
2. Ensure the pin engages implant and does not spin.
3. Select the appropriate abutment to match the engaged pin.



# EASY SERIES

Upgrading conventional areas  
through matchless design

## NEW COMPOSITION NEW EASY SERIES

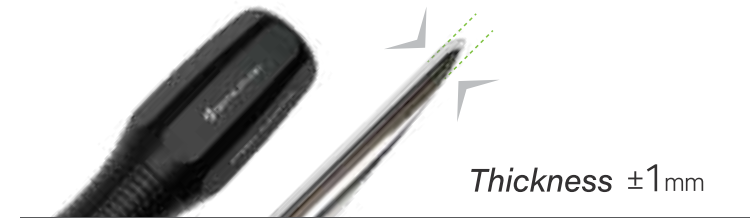
Special design unique to dental studio.

Created following extensive R&D.  
EASY SERIES is recognized worldwide as representative of Dental Studio quality.  
NEW EASY SERIES  
Incorporate feedback from top clinicians to ensure safe, predictable, and precise applications.

*Change standards, Beyond stereotypes*

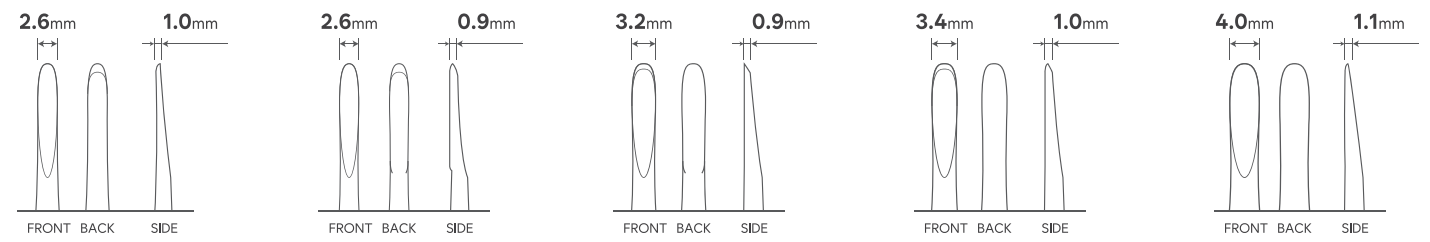
NEW EASY SERIES

# HYBRID ELEVATOR

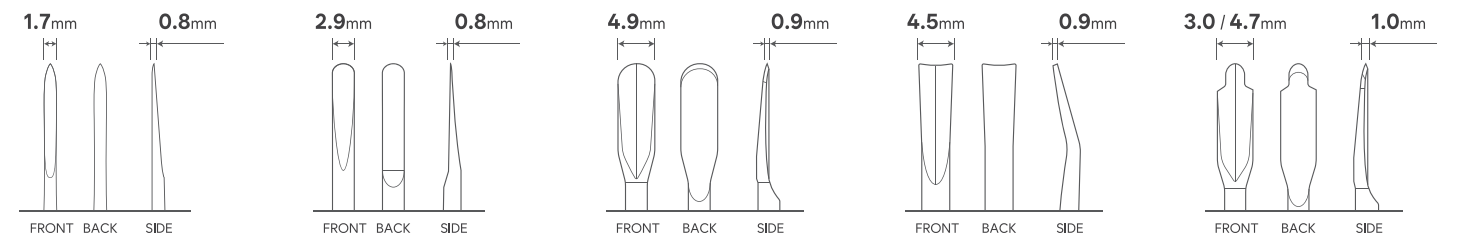
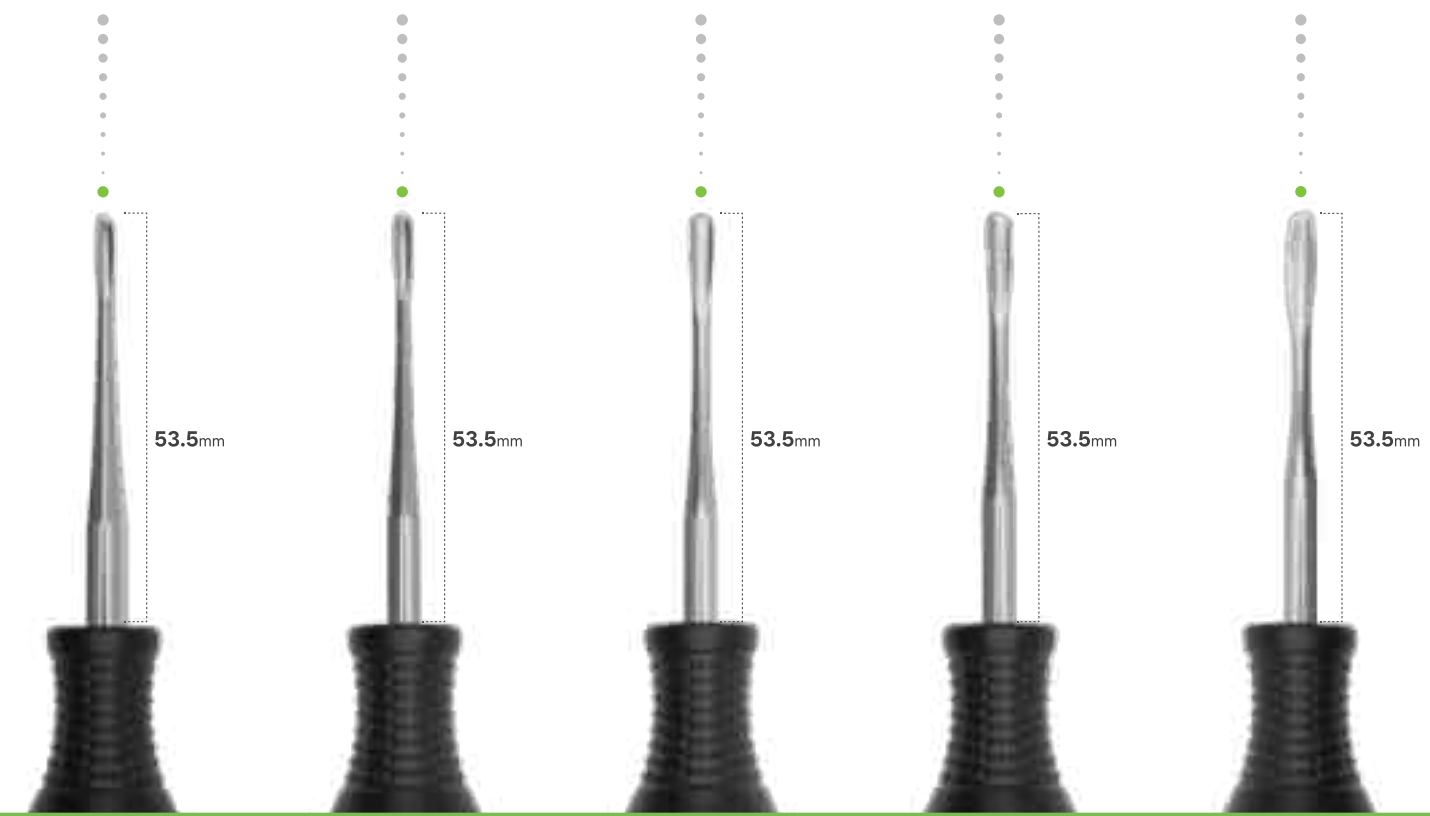


## LUXATOR ELEVATOR

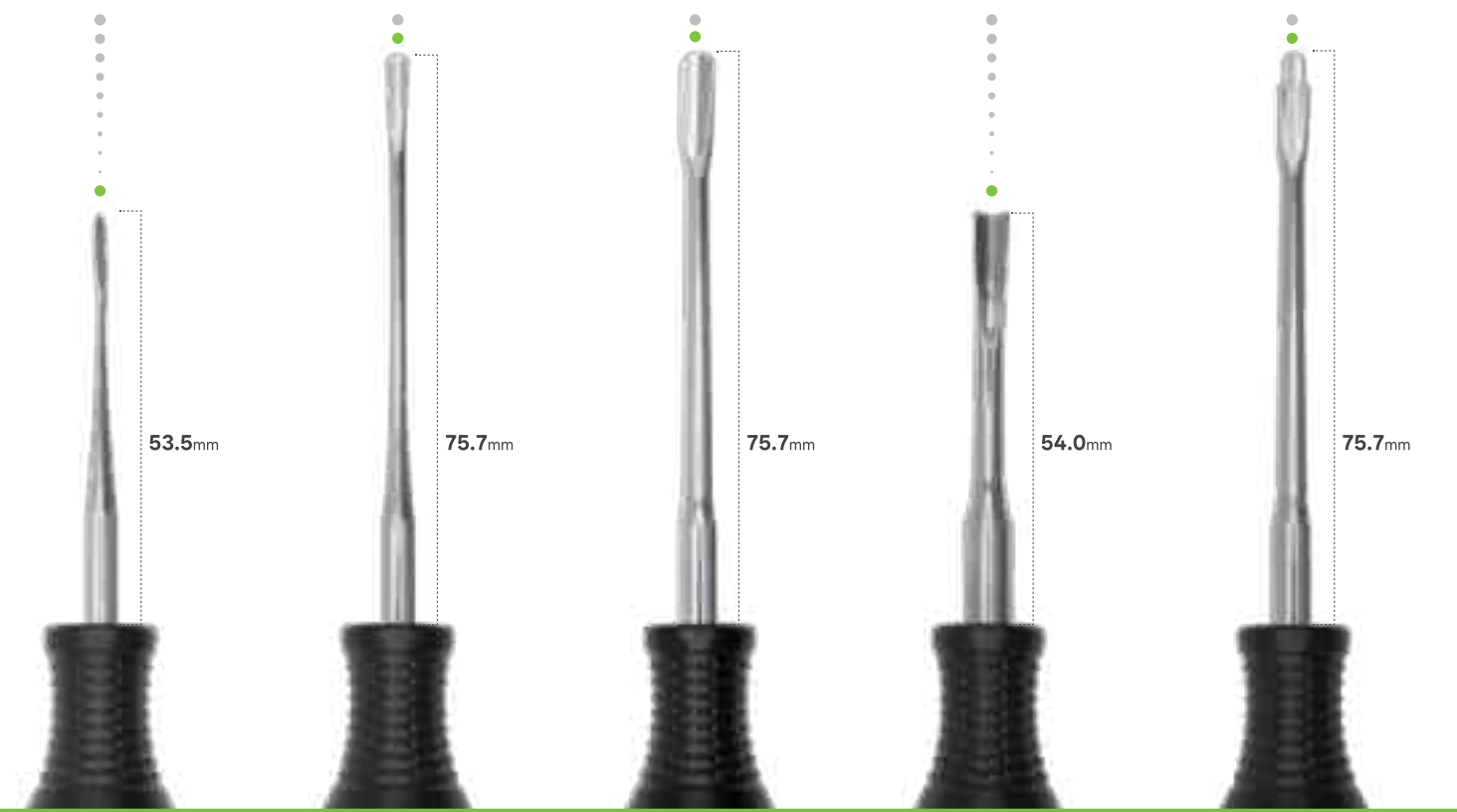
- Combines the advantages of an elevator and luxator into one instrument.
- Tip thickness of less than 1mm, still effectively performs the role of an elevator.
- Thin design like a luxator, minimizing the tissue damage.
- Enables atraumatic extraction by minimizing damage to the surrounding soft tissue and alveolar bone.



3001H 3002H 3003H 3004H 3005H



3015H 3101H 3102H 3103H 3105H





EASY SERIES 01

# EASY BLADE HOLDER



- Scalpel with a removable blade
- Prevents injury and cross infection.
- Saves time.

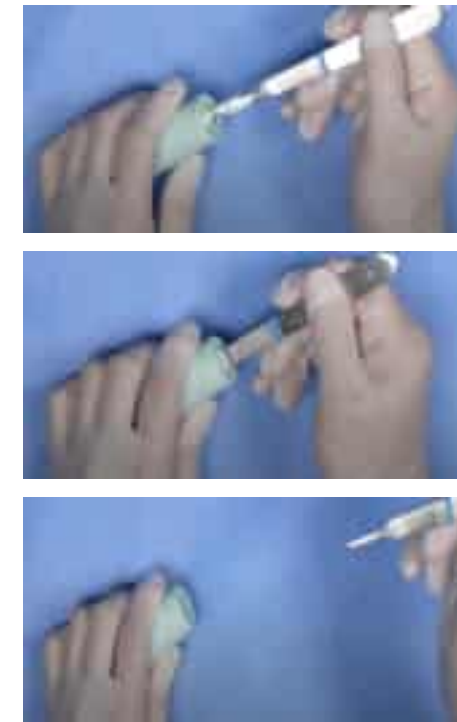


EASY SERIES 02

# EASY BLADE REMOVER



- Cross infection risk is removed.
- Safely remove and retain used blades.
- Reduces colleague risk and improves productivity.
- Minimalist design saves space..



**Safe & Easy.**  
Easy to use and safe in operation.

**Simple & Useful**  
Cylindrical shape for easy storage and application.



**Smile & Visibility.**  
Smile design.  
Smiley face engages user.



EASY SERIES 05

# EASY FORCEPS FOR CHILDREN

The advantages of Easy Forceps are applied to forceps for deciduous teeth, so that deciduous teeth can be extracted in an easier and safer way.



- Minimise periodontal damage with micro tip.
- Small design means forceps can be shielded from view when extracting children's teeth
- Tip design prevents slippage and aids visualization.
- Sprung handle for convenience.



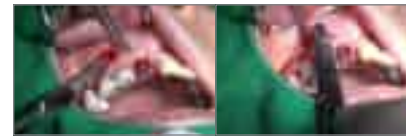
EASY SERIES 06

# EASY MULTI NEEDLE HOLDER

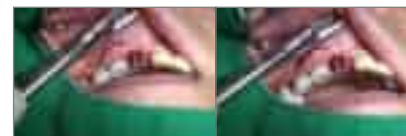
- Multi-Needle Holder combines needle holder and cutting scissors (2 in 1).
- Jaw is precision made from European tungsten carbide for increase grip.
- 2 in 1 design saves time and enables surgeon only operation.



Holder Mode



Scissor Mode



EASY SERIES 07

# EASY 360° SURGICAL SUCTION

The suction tip rotates through 360° for excellent visibility and unobstructed access to molar teeth.

- Access every section of the mouth
- Easy access irrespective of chair design.



EASY SERIES 08

# EASY IRRIGATION TUBE

- All parts can be cleaned and autoclaved up to 30 times.
- Flushing 4 - 5 times with clean water prior to autoclaving prevents clogging/corrosion.
- Luer lock for compatibility.



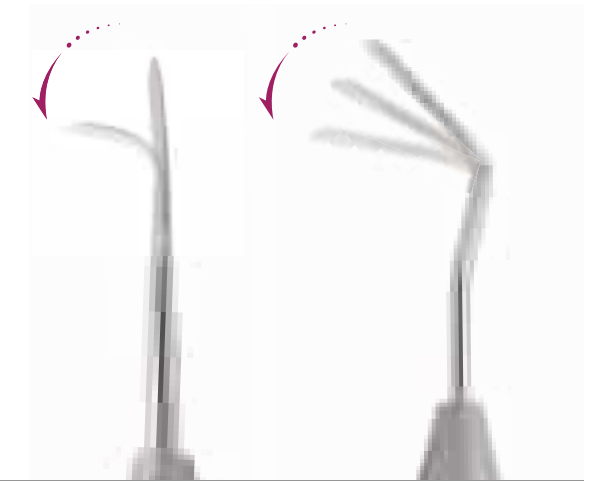
EASY SERIES 09

# EASY PERIOTOME



Safely and efficiently separates periodontal ligament from bone.

**CAUTION:** For cutting only – do not use to elevate or extract.



### ★ FLEXIBLE TYPE

EASY PERIOTOME Flexible tips ensure perfect access and efficient separation of the



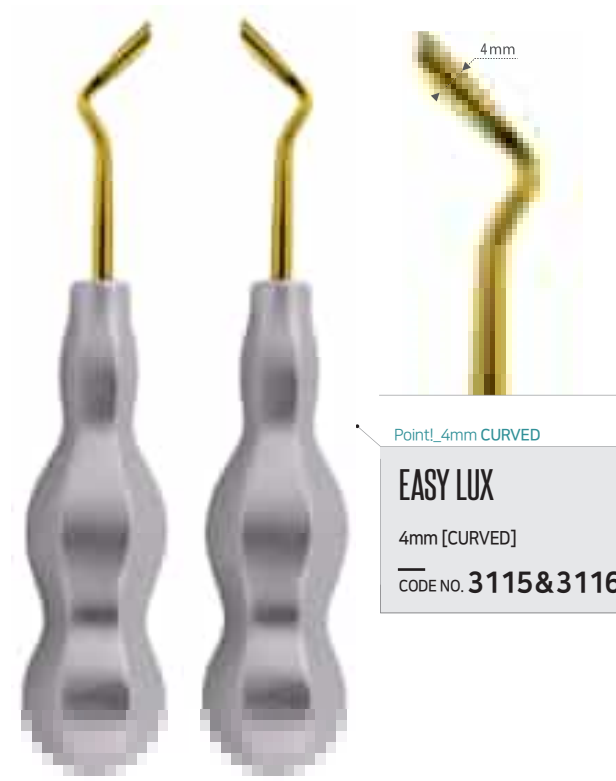


EASY SERIES 10

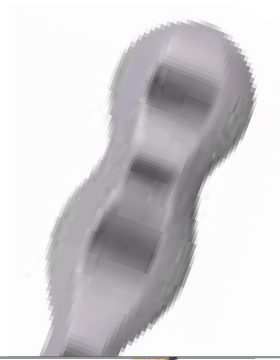
# EASY LUX



- Unique design with thin flexible blade.
- Design tip penetrates deep into PDL space making for efficient leverage.
- Use minimal force to extraction without soft tissue and alveolar bone trauma.



\*Unique alloy enables a thin and flexible profile.  
Low force extraction retains bone profile and reduces soft tissue trauma.



※Caution : Do not lift up or twist with excessive force such as ELEVATOR.

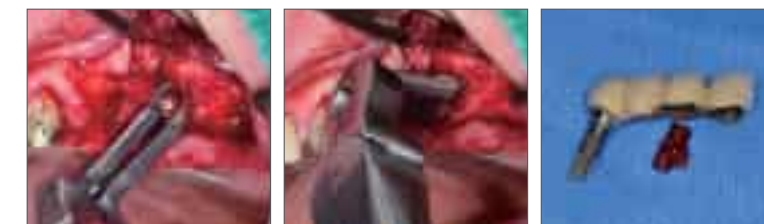
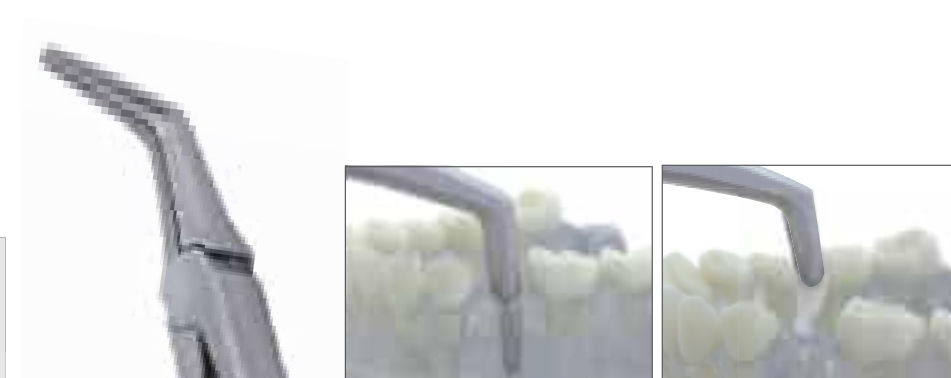
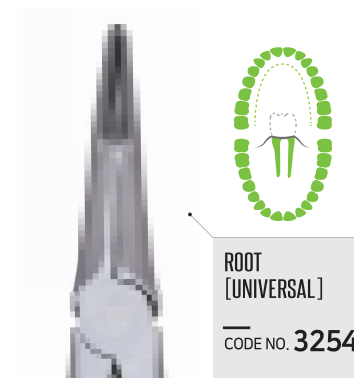
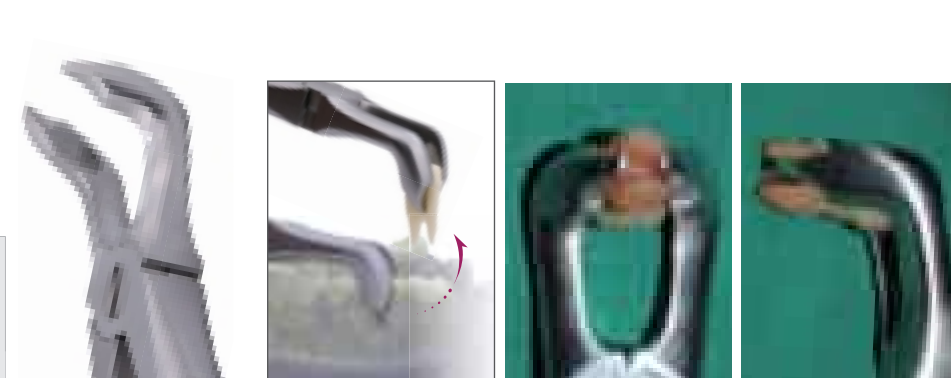
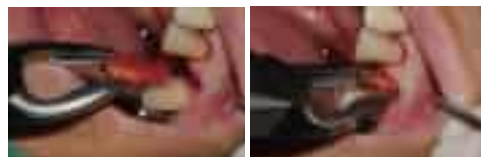
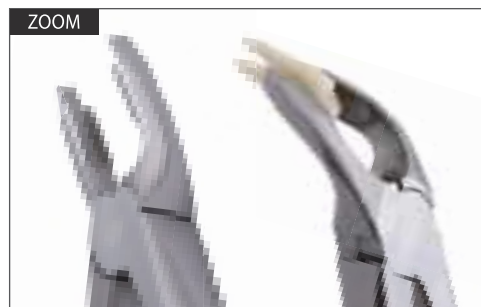
EASY SERIES 11

# EASY FORCEPS

Our specialized design enables easier and faster tooth extraction.



EASY FORCEPS incorporate a unique tip design that penetrates the periodontal space. Such a design lessens the luxation effect and reduces root residues while minimizing alveolar bone damage.



EASY SERIES 12

# EASY SINUS CURETTE

Flexible Sinus Lift instruments increase operator feel reducing perforation risk. Flexibility comes from unique material and design.

- Easy application.
- Reduces perforation risk.



7096F (SET)



SINUS CURETTE 1  
CODE NO. 7091F

SINUS CURETTE 2  
CODE NO. 7092F

SINUS CURETTE 3  
CODE NO. 7093F

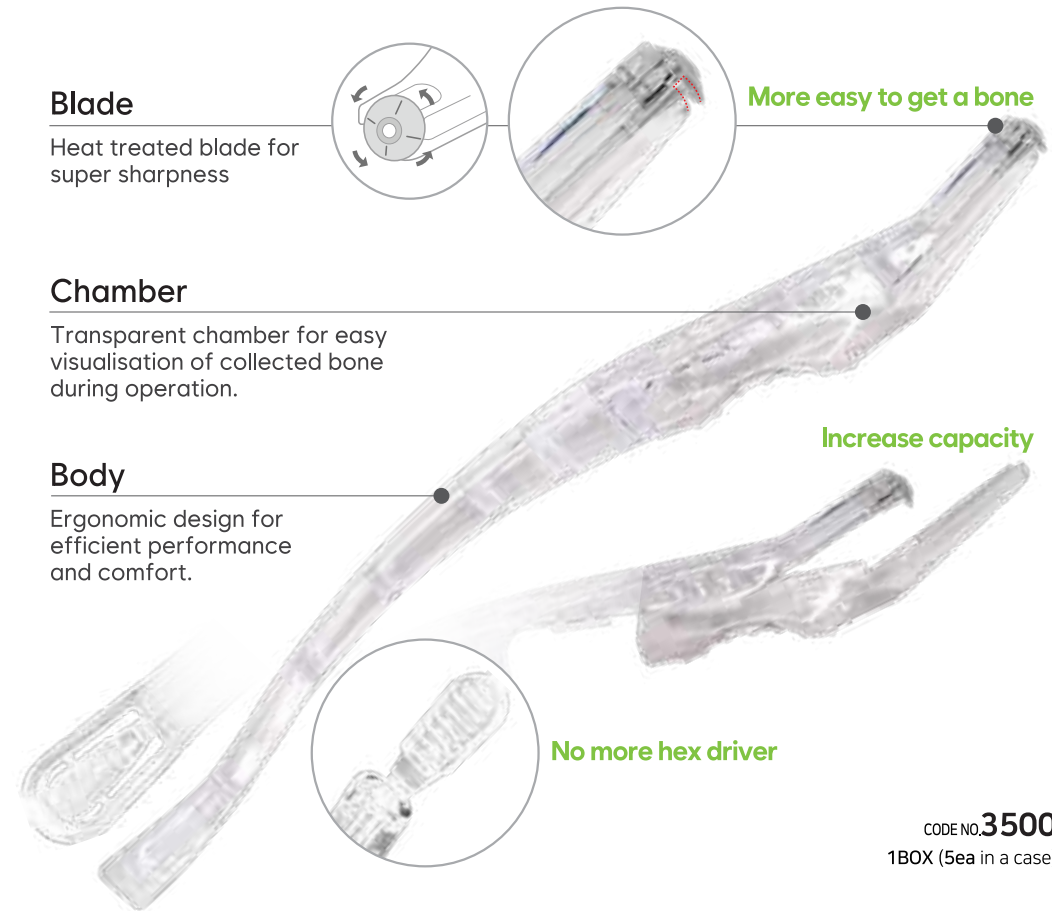
SINUS CURETTE 4  
CODE NO. 7094F

EASY SCRAPER SERIES 01

# EASY BONE SCRAPER **UPGRADE**

- Bone scraper makes it easier than ever to provide patients with mineralized cortical bone. Autogenous bone is considered the gold standard and has several advantages over other augmentation techniques, including:

- Short healing times
- Favorable bone quality
- Lower material costs
- No risk of disease transmission or antigenicity
- Predictability in the repair of larger defects or greater atrophy.



### Blade

Heat treated blade for super sharpness

### Chamber

Transparent chamber for easy visualisation of collected bone during operation.

### Body

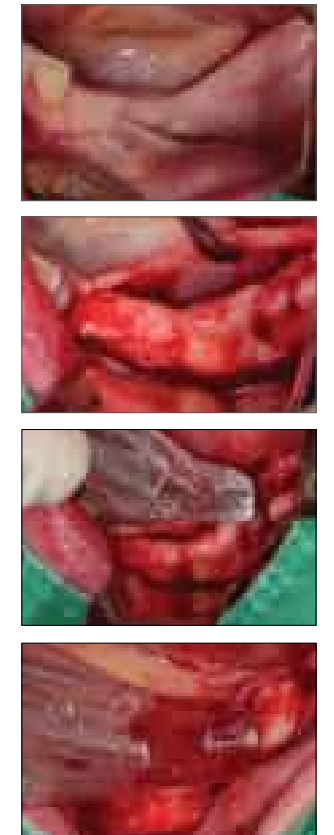
Ergonomic design for efficient performance and comfort.

More easy to get a bone

Increase capacity

No more hex driver

CODE NO. 3500  
1BOX (5ea in a case)

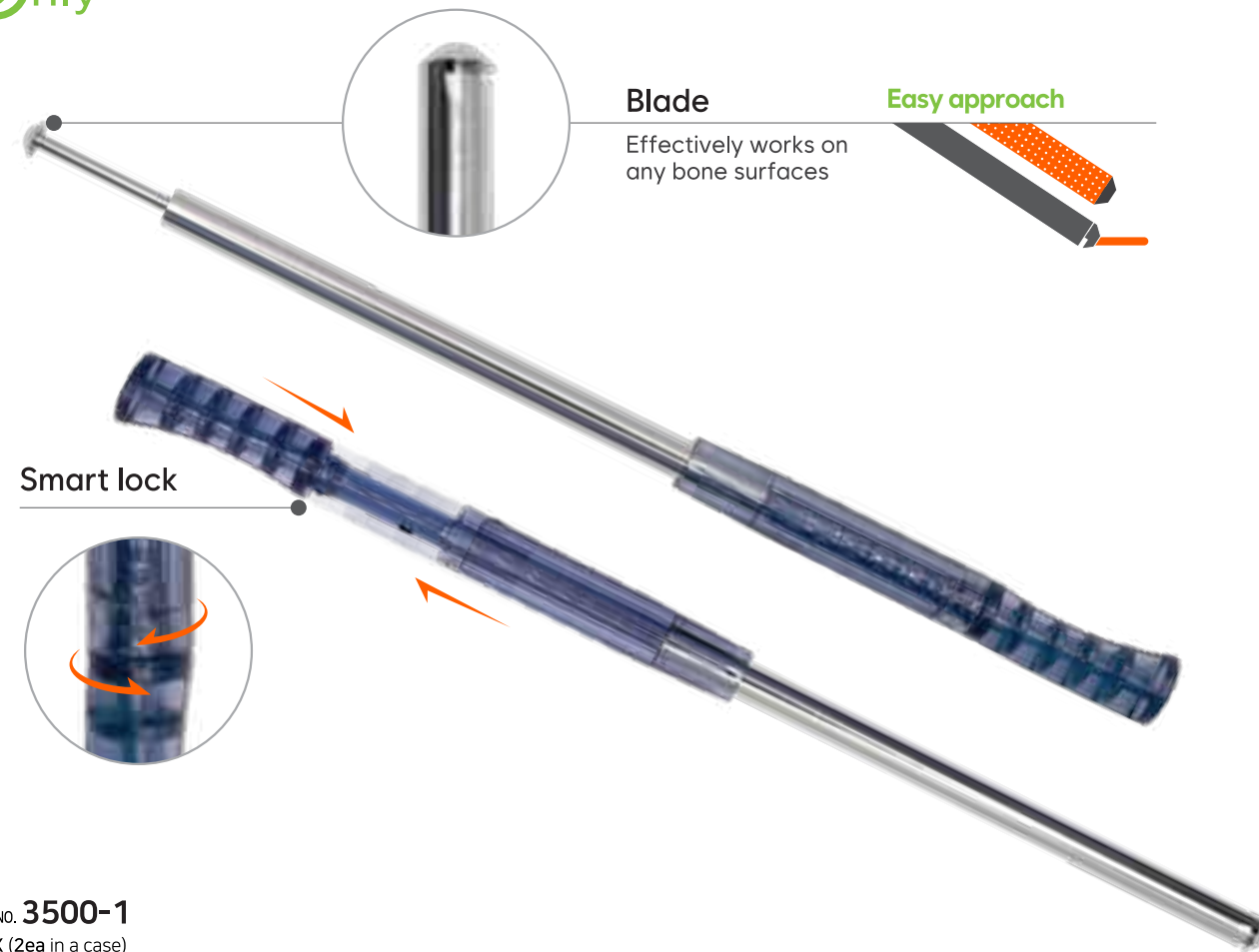




EASY SCRAPER SERIES 02

# EASY MICRO BONE SCRAPER

- Effectively works on any bone surfaces (concave, convex, plane), even those that are difficult to reach.
- Allows easy autogenous bone harvesting, even in narrow and hard-to-reach areas around bone defects.



CODE NO. **3500-1**  
1BOX (2ea in a case)

EASY SCRAPER SERIES 03

# EASY TISSUE SCRAPER

for FGG : Free Gingiva Graft



...  
COMING SOON

ONLY DENTAL STUDIO STORY  
SOLVES EVERYTHING

 DENTAL  
STUDIO [www.dentalstudio.co.kr](http://www.dentalstudio.co.kr)

B125, Geumjeung Station 2nd SKV1 Tower, 136, LS-ro, Dongan-gu,  
Anyang-si, Gyeonggi-do, Republic of Korea  
Tel\_ +82. 31. 8069. 7007 Fax\_ +82. 31. 8069. 7009

FDA REGISTERED  ISO13485

 DENTAL  
STUDIO