

ONLY DENTAL STUDIO STORY
SOLVES EVERYTHING





ONLY DENTAL STUDIO STORY

Solves everything



...

CONTENTS

05 DR. COLLECTION

DR. JEON IN SEONG
DR. CHO YONG SEOK
DR. CHO DAE SUNG
DR. JANG HO YEOL
DR. OH SANG YUN
DR. HYUN YOUNG KEUN

65 EASY SERIES

EASY BLADE HOLDER
EASY BLADE REMOVER
EASY SINUS CURETTE
EASY BONE SCRAPER
EASY FORCEPS FOR CHILDREN
EASY MULTI NEEDLE HOLDER
EASY SURGICAL 360° SUCTION
EASY IRRIGATION TUBE
EASY PERIOTOME
EASY LUX
EASY FORCEPS

27 IMPLANT TOOLS

BONE COLLECTOR
EASY IMPLANT GUIDE KIT
IMPLANT & SCREW REMOVER KIT(S)
IMPLANT REMOVER KIT(S)
IMPLANT REMOVER KIT
SIMPLE SCREW REMOVER KIT
SINUS COMBINATION KIT(S)
SINUS COMBINATION KIT
-SINUS CRESTAL APPROACH KIT
-SINUS LATERAL APPROACH KIT
SIMPLE SINUS REAMER KIT
AQUA SINUS LIFT KIT
BONE EXPANDER KIT
EASY CROWN INLAY & ONLAY REMOVER KIT
INCISOR & SEPTUM TRIMMER KIT
TITANIUM BRUSH
EASY SCREW RETRIEVER KIT
TREPHINE
TISSUE PUNCH
DIAMOND BUR
SOFT TISSUE TRIMMER
MESH
BONE TRIMMER KIT
PRF BOX
ABUTMENT ALIGNMENT PIN KIT

IMPLANT



DR. CHO YONG SEOK



DR. JEON IN SEONG



DR. OH SANG YUN



DR. JANG HO YEOL



DR. CHO SEUNG HWAN



DR. HYUN YOUNG KEUN



DR. CHO DAE SUNG



DR. PARK JUNG CHUL

ORTHODONTIC



DR. HAN KWANG HEUNG



DR. CHOI JAE WON

DENTALSTUDIO
DR.COLLECTION

IMPLANT

Dr. Cho Yong Seok
Dr. Jeon In Seong
Dr. Oh Sang Yun
Dr. Jang Ho Yeol
Dr. Cho Seung Hwan
Dr. Hyun Young Keun
Dr. Cho Dae Sung
Dr. Park Jung Chul

ORTHODONTIC

Dr. Han Kwang Heung
Dr. Choi Jae Won



CODE NO. 7300U

Dr. Jeon In Seong

DR. COLLECTION
JEON IN SEONG



DR. JEON'S UNIVERSAL KIT

Feature

- Integrated kit perfect for all implant surgical procedures.
- The use of core lifter allows simple, safe and fast operation in the maxillary sinus lift.
- The splitter and bone disk allows simple and safe alveolar bone cutting.
- The easy-to-use tack and wide screw make barrier membrane fixation and removal a simple task.
- One kit suitable for all implant systems.
- The kit allows procedure when alveolar ridge height is below 5mm.
- Based on many years of clinical experience, this kit complements the concept of the existing procedures and increases the success rate of implant placement.

Direction for use

■ CORE LIFTER 1



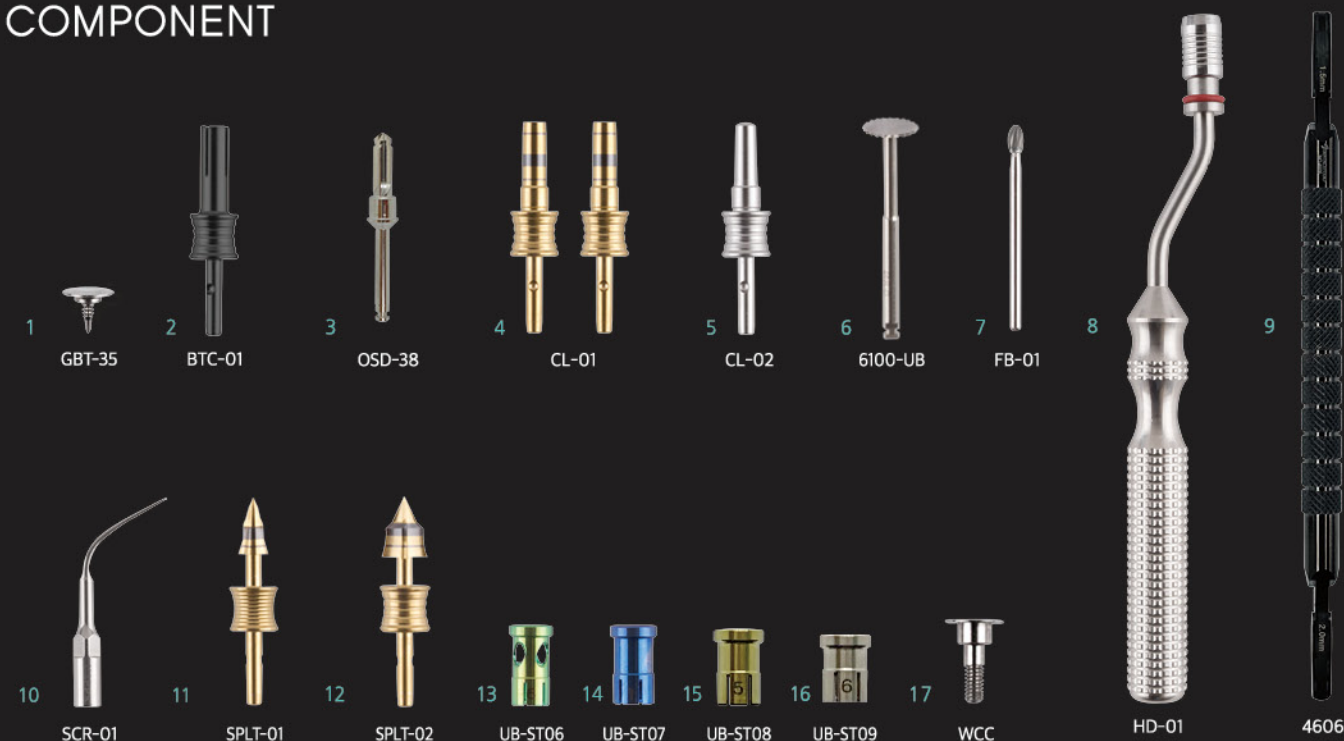
■ CORE LIFTER 2



■ SPLITTER AND LATERAL



COMPONENT



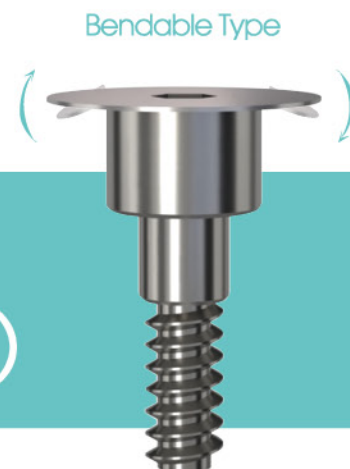
1. Bone tack : Used to fix resorbing or non-resorbing barrier membranes.
2. Bone tack carrier : Device to hold the Bone Tack and used with mallet.
3. One Shot Drill 3.8mm: It is used for 3.8mm straight drilling for the smooth entry of the core lifter
4. Core lifter 1: Used to form the core in the remaining maxillary sinus floor after first drilling.
5. Core lifter 2: Used to lift the bony window and locate it inside the maxillary sinus.
6. Disk : Used for initial entry when performing ridge splitting procedure.
7. Flame bur 1,2 : Used to grind exposed thread in peri-implantitis cases.
8. Hand Driver : Connects with bone tack carrier, core lifter and splitter.
9. Dual Double Blade Holder : Used for soft tissue grafting procedures.
10. Screw Retriever : Easily retrieves broken prosthetic screw.
11. Splitter 1 : Use for ridge split or osteotomy widening procedures.
12. Splitter 2 : Use for wider ridge split or osteotomy widening procedures.
13. Stopper 3 : Shrouds the sinus drill ensuring a safe 3mm drilling height.
14. Stopper 4 : Shrouds the sinus drill ensuring a safe 4mm drilling height.
15. Stopper 5 : Shrouds the sinus drill ensuring a safe 5mm drilling height.
16. Stopper 6 : Shrouds the sinus drill ensuring a safe 6mm drilling height.
17. Wide Cover Cap : Used to fix the resorbable barrier membranes in over-contouring GBR procedures.



CODE NO. WCC
Dr. Jeon In Seong

DR. COLLECTION
JEON IN SEONG

DR. JEON'S WIDE COVER CAP (WCC)



Feature

- A novel method to fix resorbable barrier membranes and support graft in over-contour GBR procedures.
- Simple and safe to use.
- ✓ Cap can be bent to match bone or tissue contour which, in certain cases, removes the need for barrier membranes.
- ✓ Adaptation of the flexible cap can replace the need for additional membrane fixation.
- ✓ Removes the concern associated with barrier membrane exposure.

Direction for use



■ CASE 1 After extraction, the wide cover cap is used without barrier membrane.



■ CASE 2 Can replace barrier membrane fixation in challenging cases.

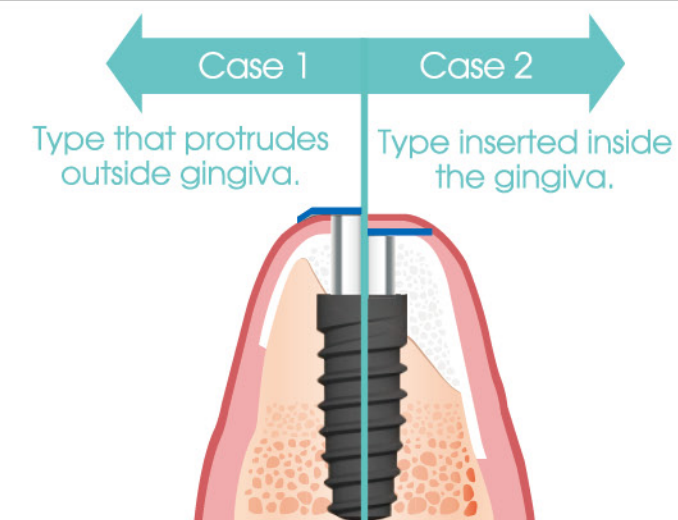


COMPONENT



Diameter(D)	Length(L)	Code No.
Ø 6.0	2mm	WCC-621
	3mm	WCC-630
	4mm	WCC-640
Ø 7.0	2mm	WCC-721A
	3mm	WCC-730A
	4mm	WCC-740A
Ø 8.0	2mm	WCC-821A
	3mm	WCC-830A
	4mm	WCC-840A

- Simplifies GBR procedures.
- Bone regeneration in between fixture and wide cover cap.
- Removes risk associated with barrier membrane exposure.
- Can remove the requirement for barrier membranes.

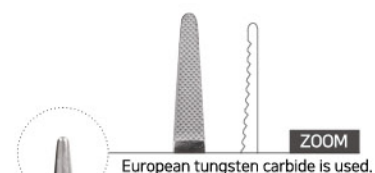




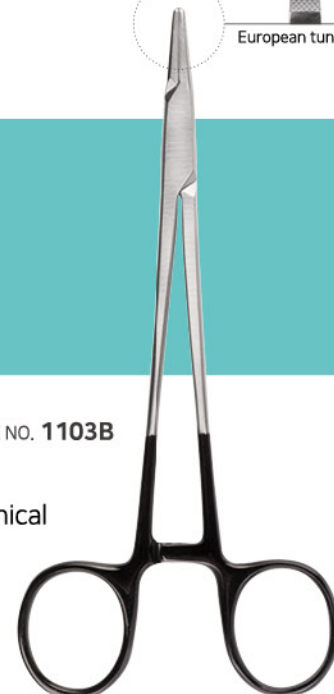
CODE NO. 7000
Dr. Jeon In Seong

DR. JEON'S SURGICAL PACKAGE

DR. COLLECTION
JEON IN SEONG



CODE NO. 1103B



CODE NO. 4606



Feature

- Dr. Jeon's Surgical Kit is based on Dr. In-sung Jeon's many years clinical experience.
- 15 instruments optimized for those new to implantology.
- Economical and efficient.
- Tungsten carbide of European origin for precise surgery

Direction for use



CODE NO. 1204B



CODE NO. 2102



CODE NO. 4701S



CODE NO. 4704S



CODE NO. 4003S



CODE NO. 4005S



CODE NO. 5362



CODE NO. 1203B



CODE NO. 4602



CODE NO. 5701



CODE NO. 4703S



CODE NO. 4007S



CODE NO. 5103S

CODE NO.	PRODUCT NAME
1103B	Needle Holder NH5042
4606	Dual Double Blade Holder
1204B	HEMOSTATS H3
2102	Iris Scissor S5083
4701S	Periosteal Elevator Molt9
4704S	Periosteal Elevator P24G
4003S	Surgical Curettes LUCASS86
4005S	Surgical Curettes MILLER11
5362	Advanced Micro Tissue Forcep
1203B	HEMOSTATS H4
4602	Mess Holder Round
5701	Bone Well 2
4703S	Periosteal Elevator Seldin
4007S	Surgical Curettes Molt2/4
5103S	Langenbeck Retractor



CODE NO. 3100

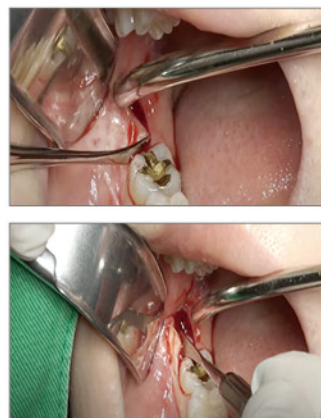
Dr.Cho Yong Seok



DR. COLLECTION
CHO YONG SEOK

DR. CHO'S EZ EXTRACTION PACKAGE

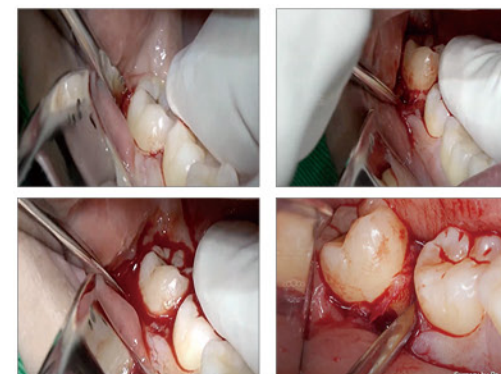
PERIOSTEAL ELEVATOR



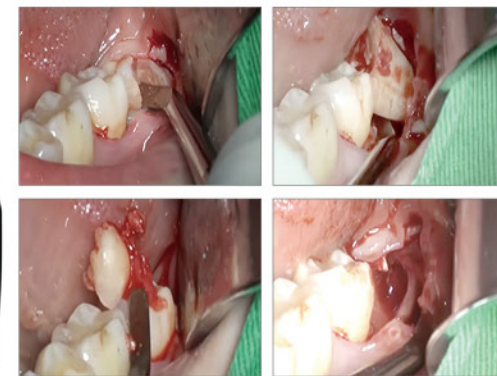
MINNESOTA RETRACTOR



ELEVATOR STR SAW TYPE
2.5mm/4mm



ELEVATOR LEFT/RIGHT



DUAL EDGE ELEVATOR
3.0/4.4mm





CODE NO. 7130

Dr. Cho Dae Sung
Dr. Jang Ho Yeol

DR. COLLECTION
CHO DAE SUNG
JANG HO YEOL



AERO DRILL (POP-UP DRILL)

Feature

- Allows crestal approach sinus lift at reduced residual bone heights.
- During drilling, the elastic force of the spring can safely lift the mucous membrane of the maxillary sinus without tearing.
- Maxillary sinus lift can be performed with one drill for a simplified procedure.
- The bone window is lifted inside the sinus to create space for new bone and promotes bone healing.
- ✓ Quick and Efficient and eliminates more complex lateral wall procedures.
- ✓ Most cases can be completed with one spring drill.
- ✓ Facilitates safe sinus lift procedure even in difficult access cases.

Direction for use

CASE 1



CASE 2



CASE 3



COMPONENT



1. Tissue Punch : It is used to remove gingival tissue during surgery.
2. Oneshot drill 3.2mm : It is used for 3.2mm straight drilling for the smooth entry of the aero drill.
3. Aero drill : It is used for maxillary sinus lift.
4. Drill Remover : It is used to separate the drill part and the shank part.
5. Aqua Tip : It is used when lifting the sinus membrane with water pressure.
6. Spring Stopper : When using Aero Drill, it is used to separate the drill portion and the shank portion in order to clean the inside of the drill.
7. Aero Drill O-Ring : When the red rubber ring inside Aero Drill is damaged, it is used for replacing the rubber ring.
8. Stopper 3 : Shrouds the sinus drill ensuring a safe 3mm drilling height.
9. Stopper 4 : Shrouds the sinus drill ensuring a safe 4mm drilling height.
10. Stopper 5 : Shrouds the sinus drill ensuring a safe 5mm drilling height.
11. Stopper 6 : Shrouds the sinus drill ensuring a safe 6mm drilling height.



Dr.Cho Dae Sung



DR. COLLECTION
CHO DAE SUNG

DR. CHO'S SCREW HOLDER

Feature

- holds the prosthetic screw for safe and secure operation.
- Prevents the driver from being swallowed during fixation or removal.
- ✓ Allows fixation of a 2nd driver at the base for efficiency.
- ✓ Non-slip design reduces hand fatigue and burden.



short

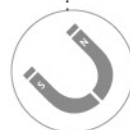


long

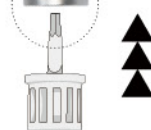
Direction for use



Short or Long type driver for flexibility.



Magnetized attachment
aids security.



Allows fixation of a 2nd driver
at the base for efficiency

■ case 1



■ case 2





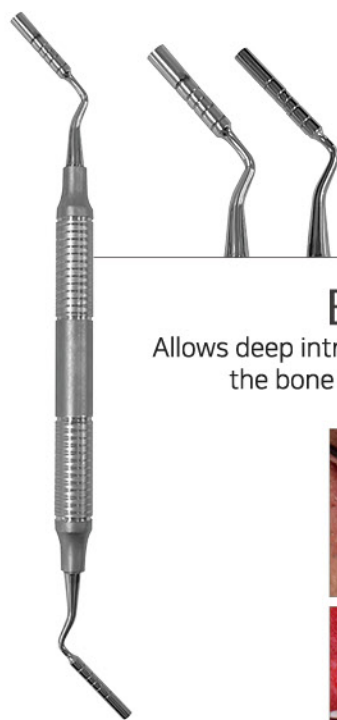
CODE NO. 7106

Dr. Jang Ho Yeol

DR. COLLECTION
JANG HO YEOL



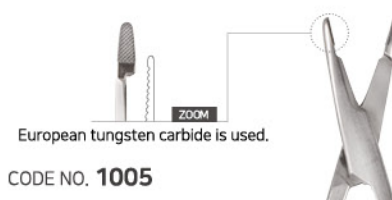
DR. JANG'S TUNNELING TECHNIQUE BASIC KIT



CODE NO. 7102

BONE CONDENSER

Allows deep intra tunnel insertion of the bone graft material



European tungsten carbide is used.

CODE NO. 1005

EASY MULTI NEEDLE HOLDER

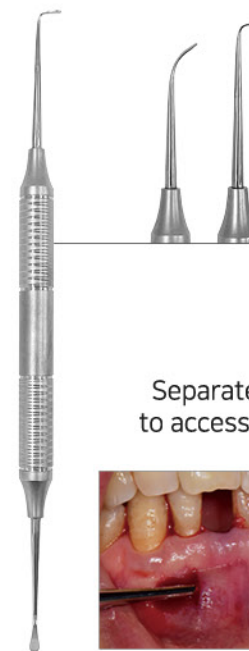
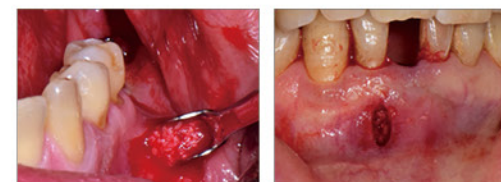
Combines a needle holder and scissors in one instrument allowing single handed suture placement and trimming.



CODE NO. 7103

TUNNELING GUIDE

Allows sub periosteal insertion of bone graft material deep inside the tunnel.



CODE NO. 7105

TUNNELING ADVANCE ELEVATOR

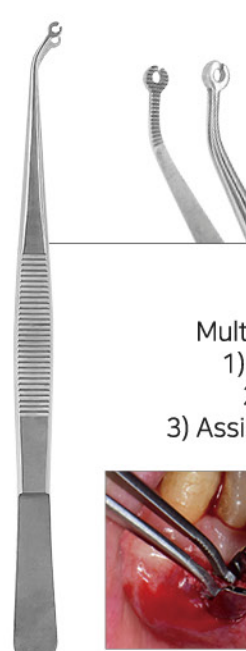
Separates the periosteum in difficult to access areas during tunnel creation.



CODE NO. 7104

TUNNELING INITIAL ELEVATOR

Creates vertical periosteal separation and tunnel expansion.



CODE NO. 7101

MULTI FORCEP

Multi-purpose instrument which:
1) Holds bone graft material.
2) Acts as tissue forceps.
3) Assists suturing due to access ring.





CODE NO. 3000

Dr. Jang Ho Yeol

DR. COLLECTION
JANG HO YEOL



DR. JANG'S EASY EXTRACTION BASIC KIT

EASY SERIES

EASY PERIOTOME

Thin & flexible blade aids separation of the PDL at the root apex.
Enables safe extraction without damage to alveolar bone.



SURGICAL CURETTE

Serrated edge allows easy removal of soft tissue.



EASY FORCEPS

EASY FORCEPS with unique tip design hold the tooth whilst allowing separation of periodontal ligament. Reduces likelihood of root remnants whilst minimizing damage to the alveolar bone.



EASY LUX

New Easy Lux has a thin, half twist blade for extra flexibility. This allows easy access to the PDL space for atraumatic separation of the tooth from the alveolar bone.





Dr. Oh Sang Yun

DR. COLLECTION
OH SANG YUN



A) CODE NO. **7301**
B) CODE NO. **7302**

DR. OH'S SIMPLE BONE TACK

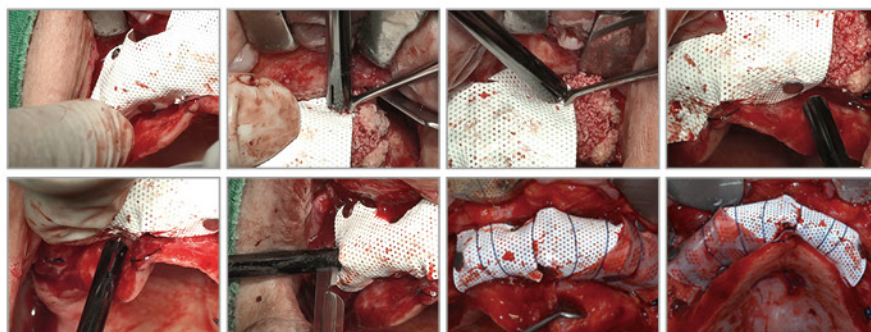
Feature

- High strength and wide (mushroom head type) tacks ensure efficient and stable membrane fixation.
- The tack applicator tool holds the tack firmly for efficient application.
- This kit includes a tool for easy and low trauma tack removal.
- ✓ The tack applicator features a contra angle for easier access in the oral cavity.
- ✓ High quality mini kit includes applicator, removal tool and tacks.



7301
A TYPE : 5EA
7302
B TYPE : 15EA

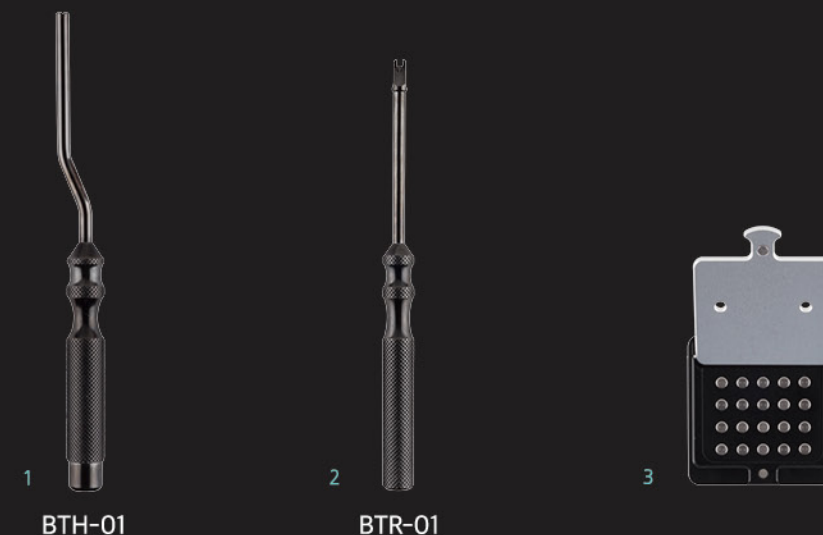
Direction for use



Actual size **A** & **B**



COMPONENT



COMPLEMENT KIT

A  **× 5EA**
GBT-35

B  **× 15EA**
GBT-35

A type : 1. Tack Holder / 2. Tack removal tool / 3. Tacks x 5 (Ø3.5 x 3mm)
B type : 1. Tack Holder / 2. Tack removal tool / 3. Tacks x 15 (Ø3.5 x 3mm)

1. Tack Holder: Device holds the tack for application with a mallet.
2. Tack Remover: Dedicated device used to remove the Tack.
3. Bone Tack : Used to fix shield.



CODE NO. 5365

Dr. Oh Sang Yun

DR. COLLECTION
OH SANG YUN

DR. OH'S EASY ADVANCED T.P SET

EASY SERIES

Feature

- Suitable for all cases.
- Optimized for safe soft tissue manipulation and suturing.
- 60% less expensive than the products of German and US manufacturers with equivalent quality.

- ✓ T.P NO.1 : Features a large tip to catch thicker, soft tissue.
- ✓ T.P NO.2 : Features a small tip to catch thin, soft tissue.
- ✓ T.P NO.3 : Features an angled tip to assist access in challenged or small mouth openings.

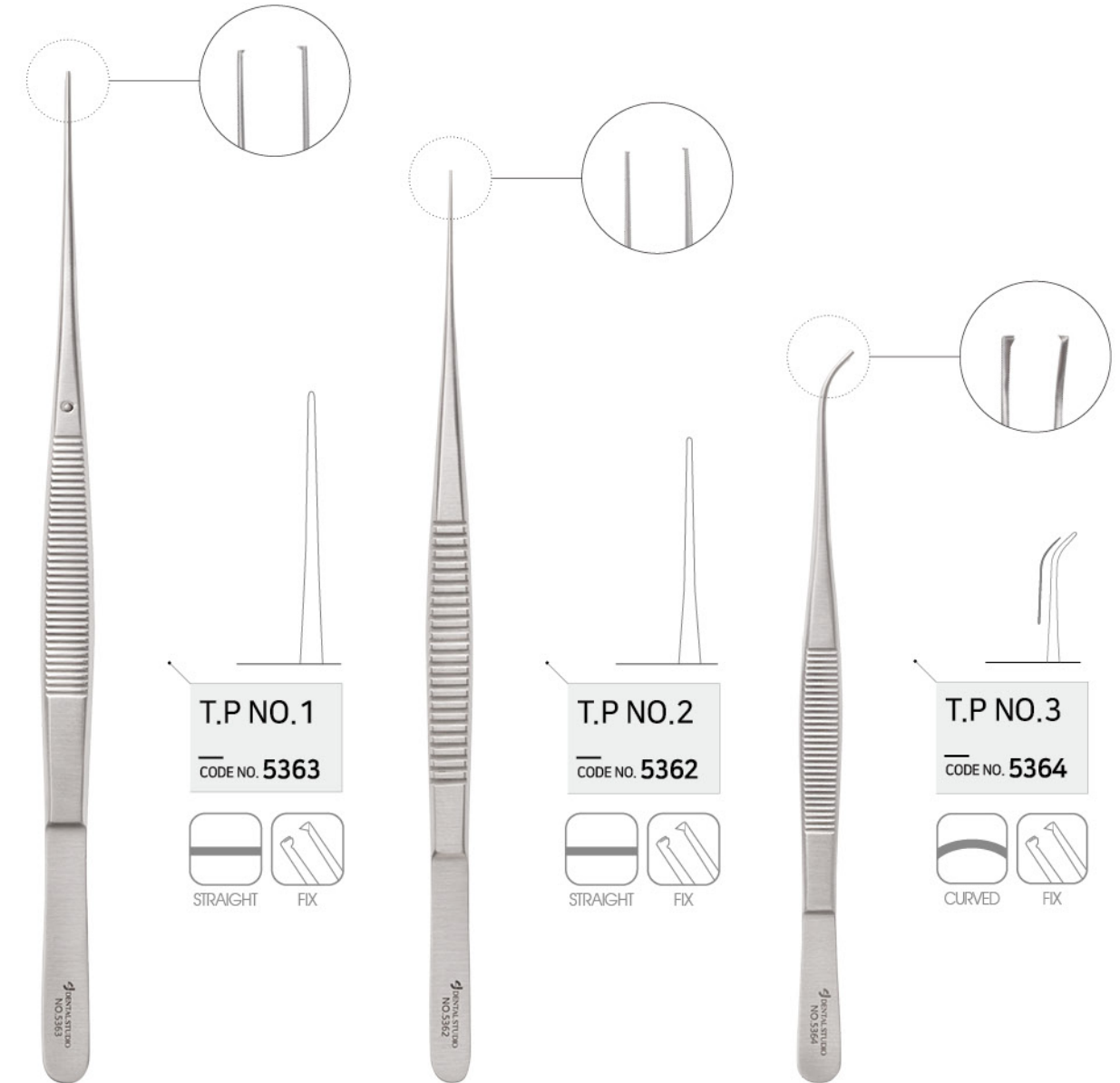


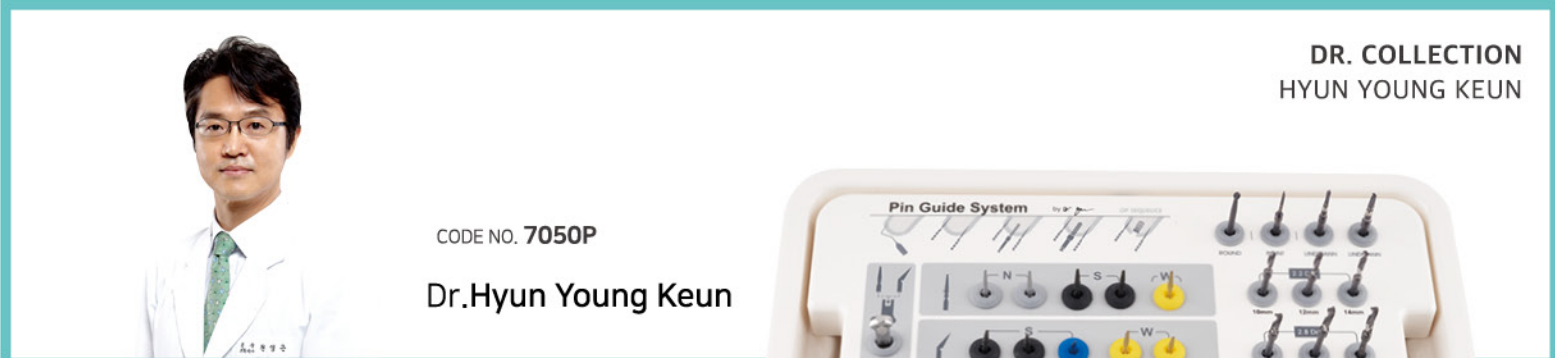
Direction for use

■ CASE 1



■ CASE 2





DR. HYUN'S PIN GUIDE

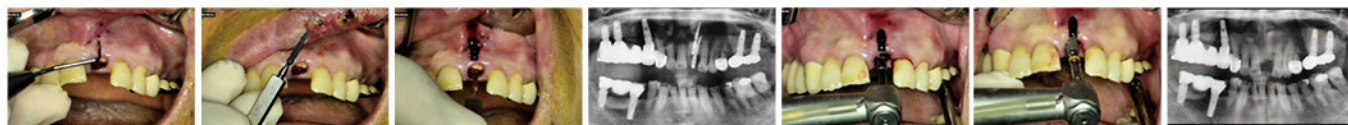
Feature

- Assist implant placement by marking the ideal insertion and angulation in a safe and accurate way.
- Removes the visual obstruction associated with surgical guides.
- Delivers the accuracy of a surgical guide without the additional time and costs.
- Easy to use.

Direction for use



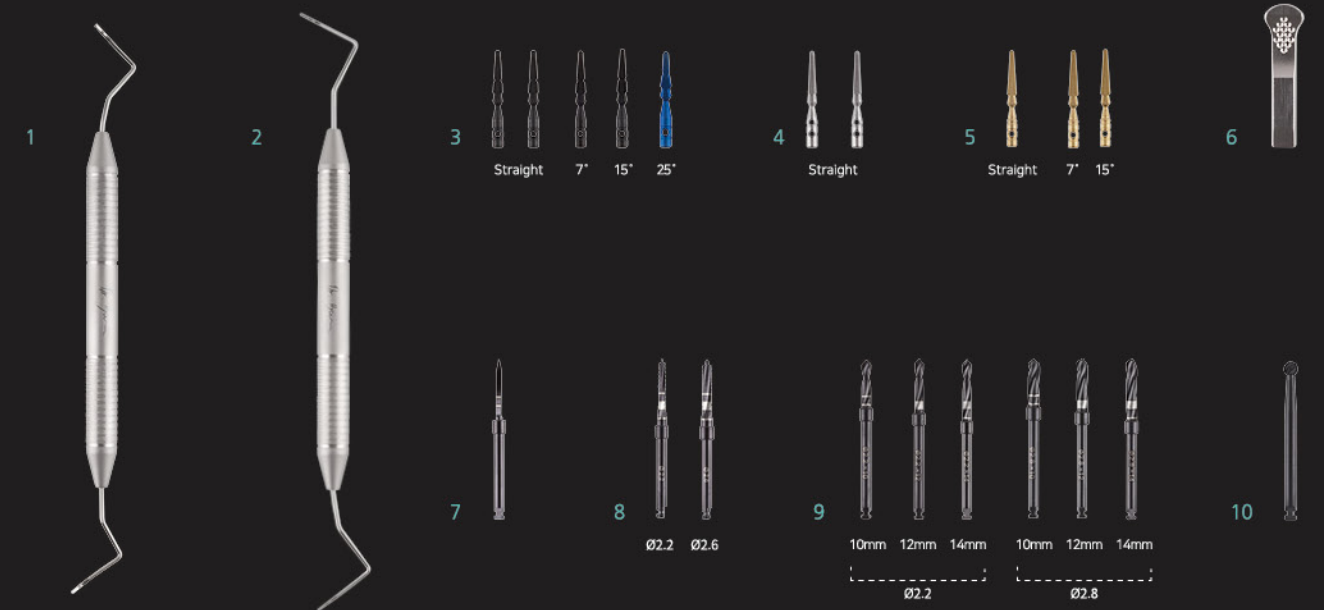
CASE 1



CASE 2



COMPONENT



1. Blade Marker : Blade Marker: Marks the position of insertion in the buccal and lingual sides of the alveolar bone.
2. Point Marker: Use after blade marker to ensure correct access for the pin.
3. Straight PIN : Is inserted into through the buccal side of the mucosa between the bone and periosteum following the ideal line of implant insertion.
-Three types: Straight, 7, 15 and 25 degrees
4. Narrow PIN : Is inserted into lingual or palatal side of the mucosa into the mucous membrane following the ideal line of implant insertion.
5. Wide PIN : Replaces the straight pin is mobility in the mucous membrane is detected.
-Two types: Straight, 7 and 15 degrees
6. Holder : Securely holds the pins for easy insertion.
7. Point drill : The initial drill is placed centrally between two pins.
8. Lindeman drill : It is used to change the position of the osteotomy.
-Two diameters: Ø2.2 and Ø2.6mm.
9. Cutting drill : Used to create the osteotomy.
-Two diameters: Ø2.2 and Ø2.8mm in 10, 12 and 14mm lengths.
10. Round drill : Is used after implant placement to create crestal bone space for the healing abutment.

BONE COLLECTOR

OSBC Kit A, B Oneself Bone Collector Kit

Feature

- Safely collect up to 1cc of autogenous bone in less than 10 seconds.
- Each bone collector is used in conjunction with a safety drill stopper allowing bone collection up to 4mm.
- The drill design minimizes bone heating even at speeds of 300 RPM+ when used with irrigation.
- Can be used safely without irrigation at 50 RPM.

- ✓ Special drill and silicone stopper system allow shake-free drilling.
- ✓ Design minimizes bone loss whilst collecting up to 30% more bone compared to alternatives.
- ✓ Reusable for increased efficiency and economy.

Available in four widths and two types depending upon the stopper:



COMPONENT

A



2



B



2



1. Collector Drill : Ø4, Ø5, Ø6, Ø7
-Collect the bone inside the drill. [Recommended RPM 500 – 1000]
2. Stopper : Ø4, Ø5, Ø6, Ø7
-Type A features a Stainless-steel stopper and Type B a Peek stopper.

Direction for use



CASE 1



CASE 2



EASY IMPLANT GUIDE KIT

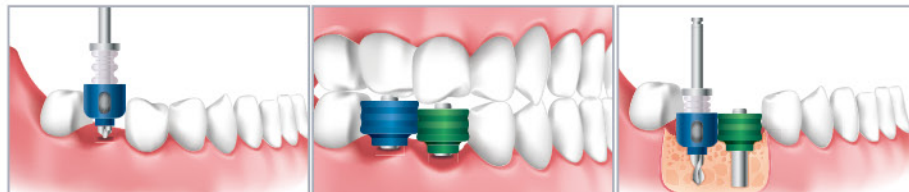
Feature

- Ensures accurate freehand implant depth drilling with simultaneous crown width orientation.
- Avoid implant spacing errors when placing adjacent implants.
- Surgery time can be shortened and possibility of Saves time and improves implant success.

- ✓ High quality allows compared to alternatives.
- ✓ Efficient mini kit includes all essential components.
- ✓ Colour coding allows simple and intuitive use.



Direction for use



CASE 1

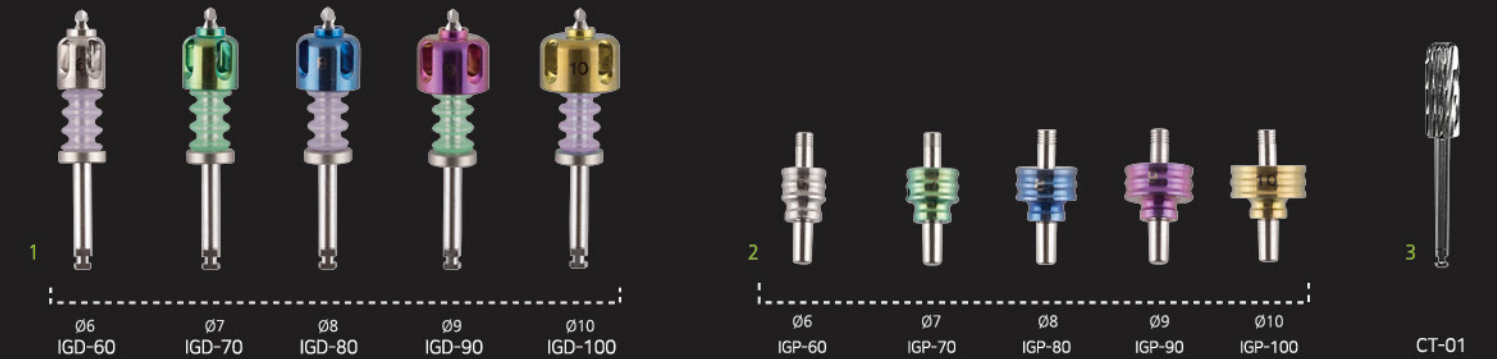


CODE NO. **7350-A**
CODE NO. **7350-B**

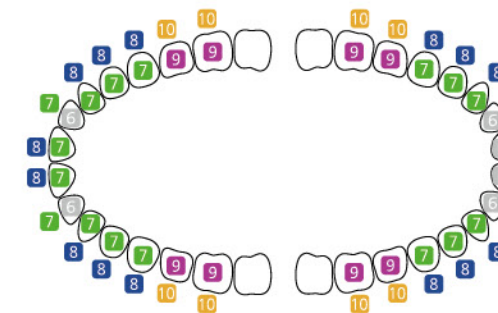
Top view



COMPONENT



1. Crown Guide Drill with incorporated spacers. Ø6, 7, 8, 9 and 10mm.
Guides optimal positioning in respect of the final implant born prosthetic crown. Colour coded to match crown location.
2. Crown Guide Pin: Ø6, 7, 8, 9, 10mm. Type A has one of each size, Type B has two for multiple implant cases.
Allows optimal spacing, parallelism occlusal checks when multiple implants are placed. Colour coded to match crown location.
3. Crest Trimmer: Used for flattening narrow or thin alveolar bone.



IMPLANT & SCREW REMOVER KIT (S)

Feature

CODE NO. 7051

- Includes multiple options to allow easy and safe abutment screw or implant removal.

- ✓ The only kit needed for removal of all broken or damaged abutment screws or implants.
- ✓ Suitable for a wide variety of manufacturers and connection types.
- ✓ Protects the internal implant thread when removing broken abutment screws.

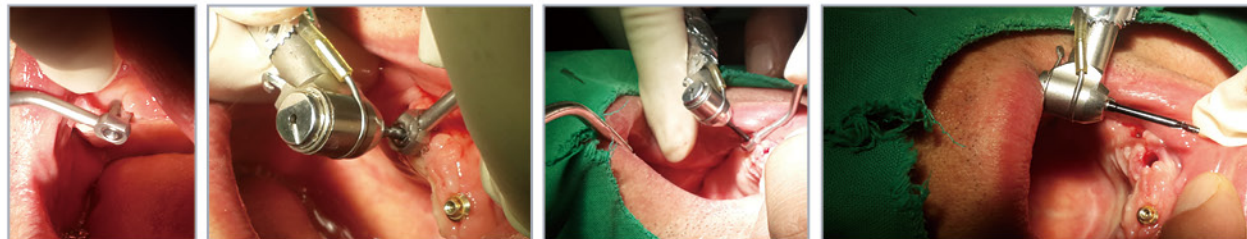


Direction for use

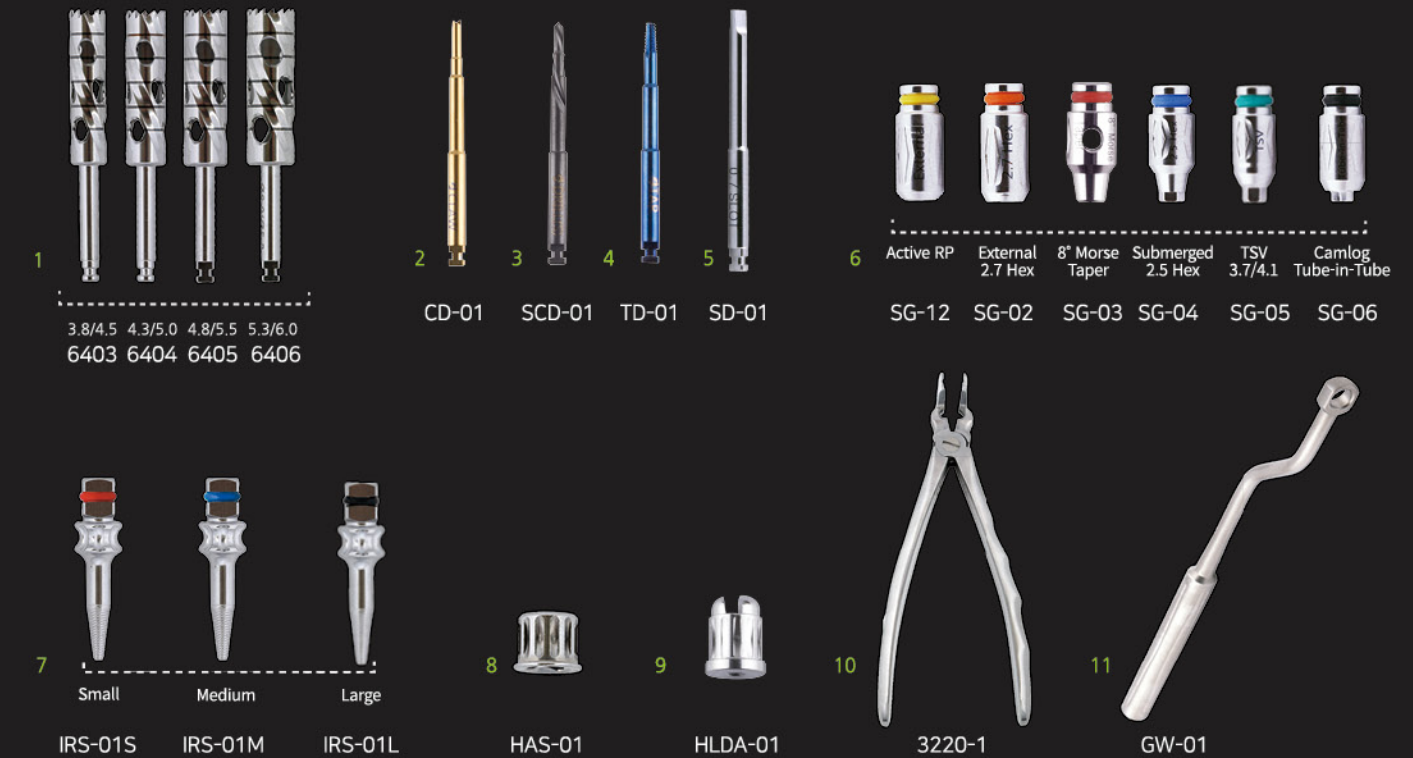
■ CASE 1



■ CASE 2



COMPONENT



1. Trephine Bur : [3.8/4.5], [4.3/5.0], [4.8/5.5], [5.3/6.0]. When attached to the handpiece trephine burrs allow complete removal of an implant when low trauma internal contact removal is unsuccessful.
2. Claw Driver: Is used counterclockwise in the handpiece to engage damaged or broken abutment screws through contact friction.
3. Screw Drill: Use at 1500 to 2000RPM counterclockwise through the screw guide (6) if removal of a broken screw is not possible with the claw driver.
4. Tap Driver: Used after the Screw Drill (3) counterclockwise to engage the broke abutment screw.
5. Slot Driver (0.7): An alternative method to engage broken abutment screws. Use counterclockwise.
6. Screw Guide: Use with Screw Drill (3) to protect the internal implant thread when drilling a pilot hole in the broken screw. Six types designed to match various internal implant connections. Active RP, External 2.7 Hex, 8° Morse Taper, Submerged 2.5 Hex, TSV 3.7/4.1, Camlog.
7. Implant Removal Taps: Engages the implant for removal by low trauma internal means. Connect to ratchet and use counterclockwise. Three diameters.
8. Hand Adapter (Straumann type): Allows use of the internal implant removal tools with the Straumann type ratchet.
9. Driver Hand Adapter (Straumann type): Used for connecting internal implant removal tools to hand driver.
10. Implant Forceps: The first-choice method for quick and simple implant removal.
11. Guide Wrench: Used for fixing the screw guide (6) to the implant.

IMPLANT REMOVER KIT (S)

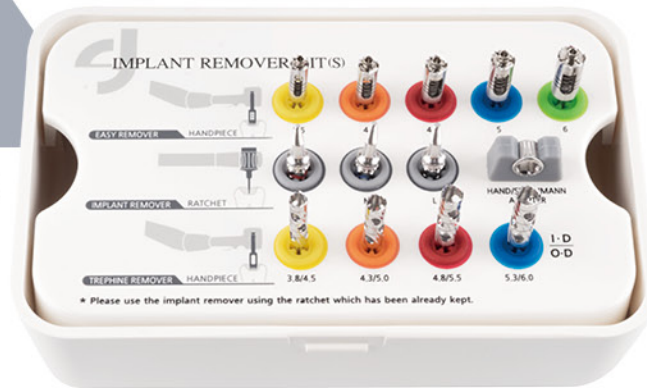


CODE NO. 7041

Feature

- Options for internal (low trauma) and external removal of broken implants.
- The trephine burs are equipped with guides to reduce bone losses.
- Implant removal forceps - the first-choice method for implant removal.

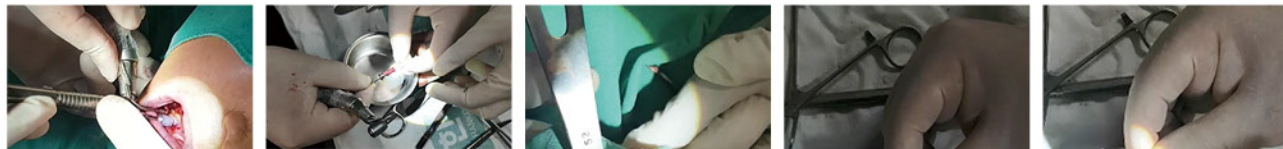
- ✓ Allows low trauma removal of failed or broken implant through internal engagement.
- ✓ Accurate drilling and reduced chair time.
- ✓ Atraumatic extraction minimized bone loss.
- ✓ Eliminates fracture risk.



Top view

Direction for use

■ CASE 1



■ CASE 2



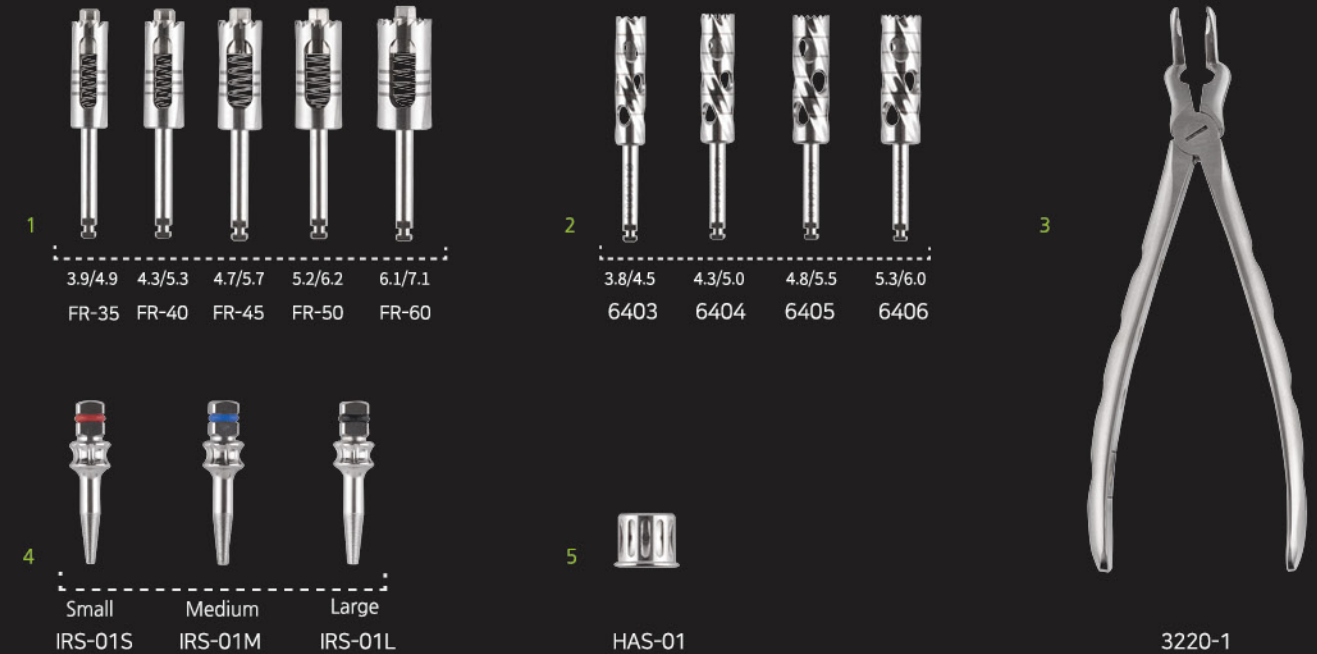
■ CASE 3



COMPONENT

The more you see, the more you like.

Simple and sensible style of IMPLANT REMOVER KIT by Dental Studio



1. Easy Removers: [3.9/4.9], [4.3/5.3], [4.7/5.7], [5.2/6.2], [6.1/7.1] – Used of low trauma internal connection removal of the implant in conjunction with the guide tap (4).
2. Trephine Burrs: [3.8/4.5], [4.3/5.0], [4.8/5.5], [5.3/6.0] - Used with handpiece to remove implant when internal connection is not possible.
3. Implant Forceps: The first-choice method for quick and simple implant removal.
4. Implant Removal Taps: Engages the implant for removal by low trauma internal connection. Connect to ratchet and use counterclockwise. Three diameters.
5. Hand Adapter: Allows use of the internal implant removal tools with the Straumann type ratchet.

IMPLANT REMOVER KIT

Feature

CODE NO. **7040**

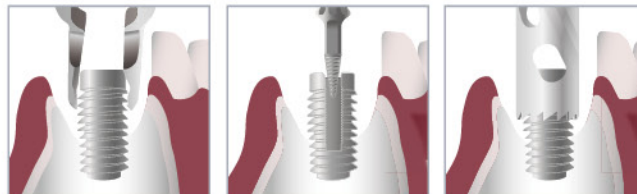
- Simple kit allows for removal of common implant sizes.
- Inclusion of forceps and internal implant taps facilitate low trauma removal.

- ✓ Implant forceps.
- ✓ Internal tap removal tools.
- ✓ Trephine Burrs in optimal sizes.

Top view



Direction for use



Implant Forcep CASE Implant Remover CASE Trephine CASE

■ CASE 1



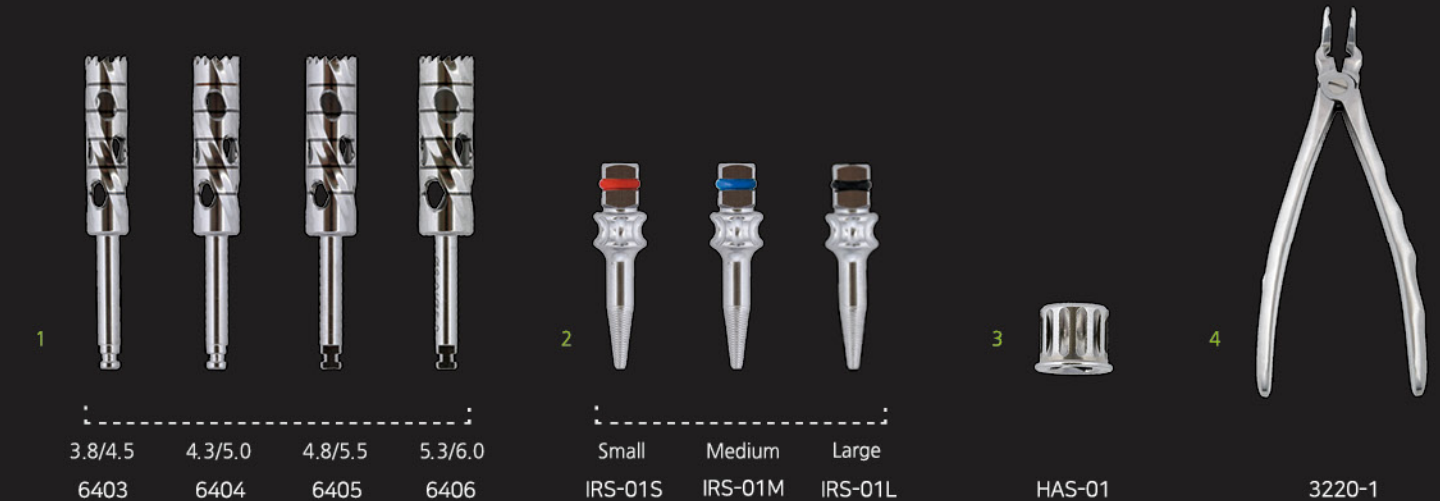
■ CASE 2



COMPONENT

┌ The more you see, the more you like.

Simple and sensible style of IMPLANT REMOVER KIT by Dental Studio ┐



1. Trephine Burrs: 3.8/4.5, 4.3/5.0, 4.8/5.5, 5.3/6.0 - Used with handpiece to remove implant when internal method is not possible.
2. Implant Removal Taps: Engages the implant for removal by low trauma internal connection. Connect to ratchet and use counterclockwise. Three diameters.
3. Hand Adapter: Allows use of the internal implant removal tools with the Straumann type ratchet.
4. Implant Forceps: The first-choice method for quick and simple implant removal.

SIMPLE SCREW REMOVER KIT

Feature

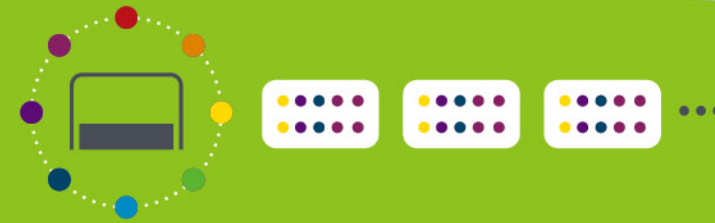
CODE NO. 7052

- Used for simple removal of broken abutment screw from inside the implant.

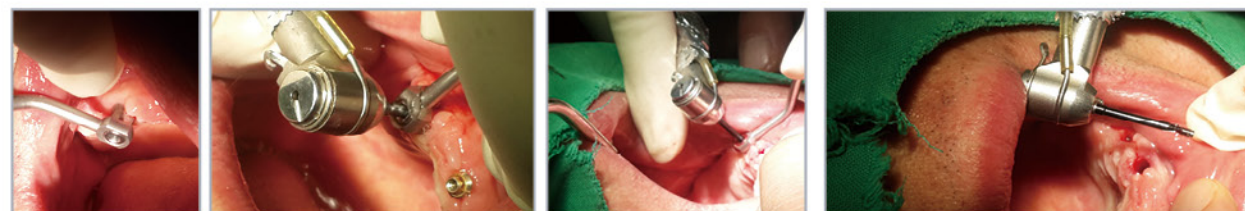
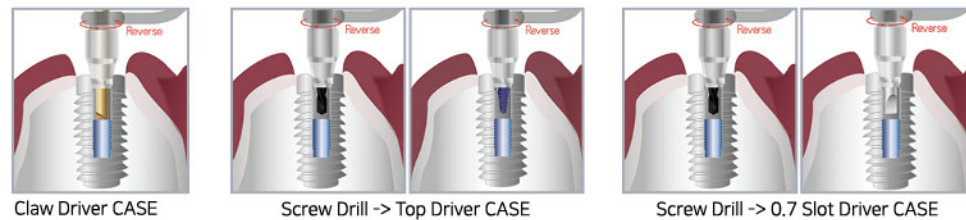
- ✓ Economic - Includes only essential components.
- ✓ Simplicity - For efficient operation.



CUSTOMIZED ORDER

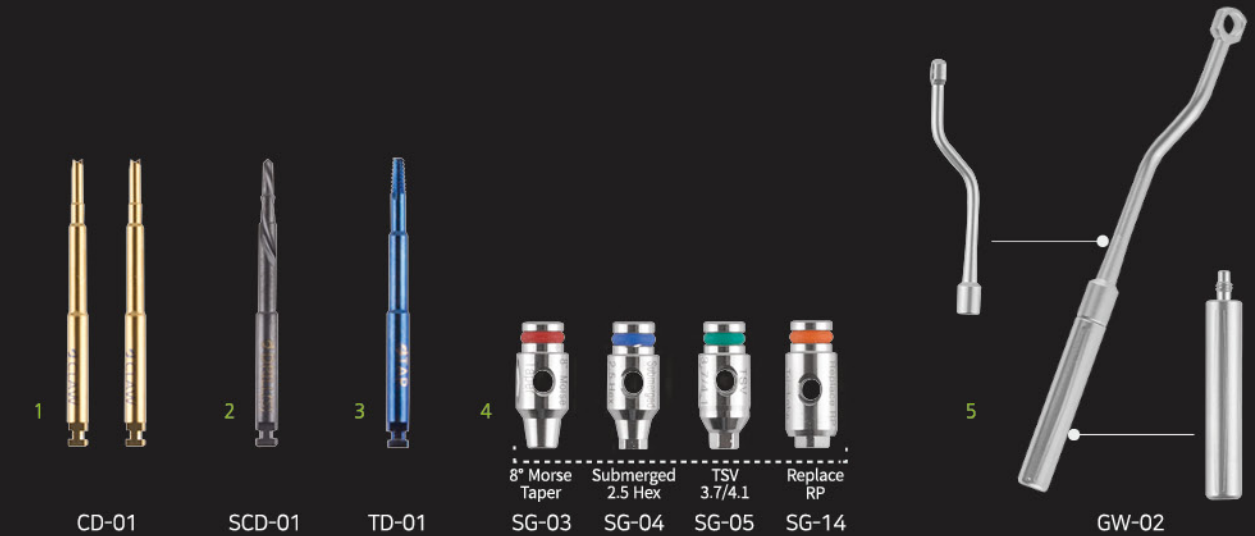


Direction for use



COMPONENT

Reduce your burden in the price. *Mini Screw Remover Kit* where the essential functions and assured empirical technologies are accumulated.



1. Claw Driver : Use counterclockwise in the handpiece to engage damaged or broken abutment screws through contact friction.
2. Screw Drill : Use at 1500 to 2000RPM counterclockwise through the screw guide (4) if removal of a broken screw is not possible with the claw driver.
3. Tap Driver : Used after the Screw Drill (2) counterclockwise to engage the broke abutment screw.
4. Screw Guide : Use with Screw Drill (2) to protect the internal implant thread when drilling a pilot hole in the broken screw. Four types to match common internal implant connections. 8° Morse Taper, Internal Hex 2.5mm, Hex, TSV 3.7/4.1, Replace RP.
5. Guide Wrench : Used for fixing the screw guide (4) to the implant.

SINUS COMBINATION KIT (S)

SINUS CRESTAL & LATERAL KIT

Feature

CODE NO. 7110S

- All tools to complete sinus augmentation procedures using either the crestal or lateral approaches.
- Quick and Efficient and eliminates more complex lateral wall procedures.
- Most cases can be completed with one spring drill.
- Unique reamers create access without trauma to the Schneiderian Membrane.
- Includes Aqua lift components for safe crestal lifting of the Schneiderian Membrane.
- Multiple Sinus Curettes allow safe elevation of the Schneiderian Membrane in lateral approaches.

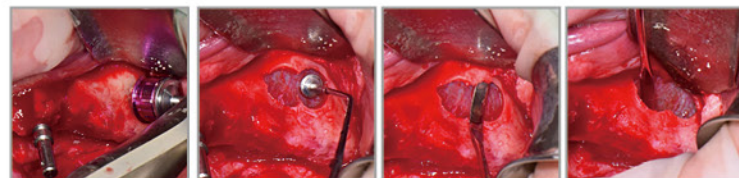


Direction for use

CASE 1



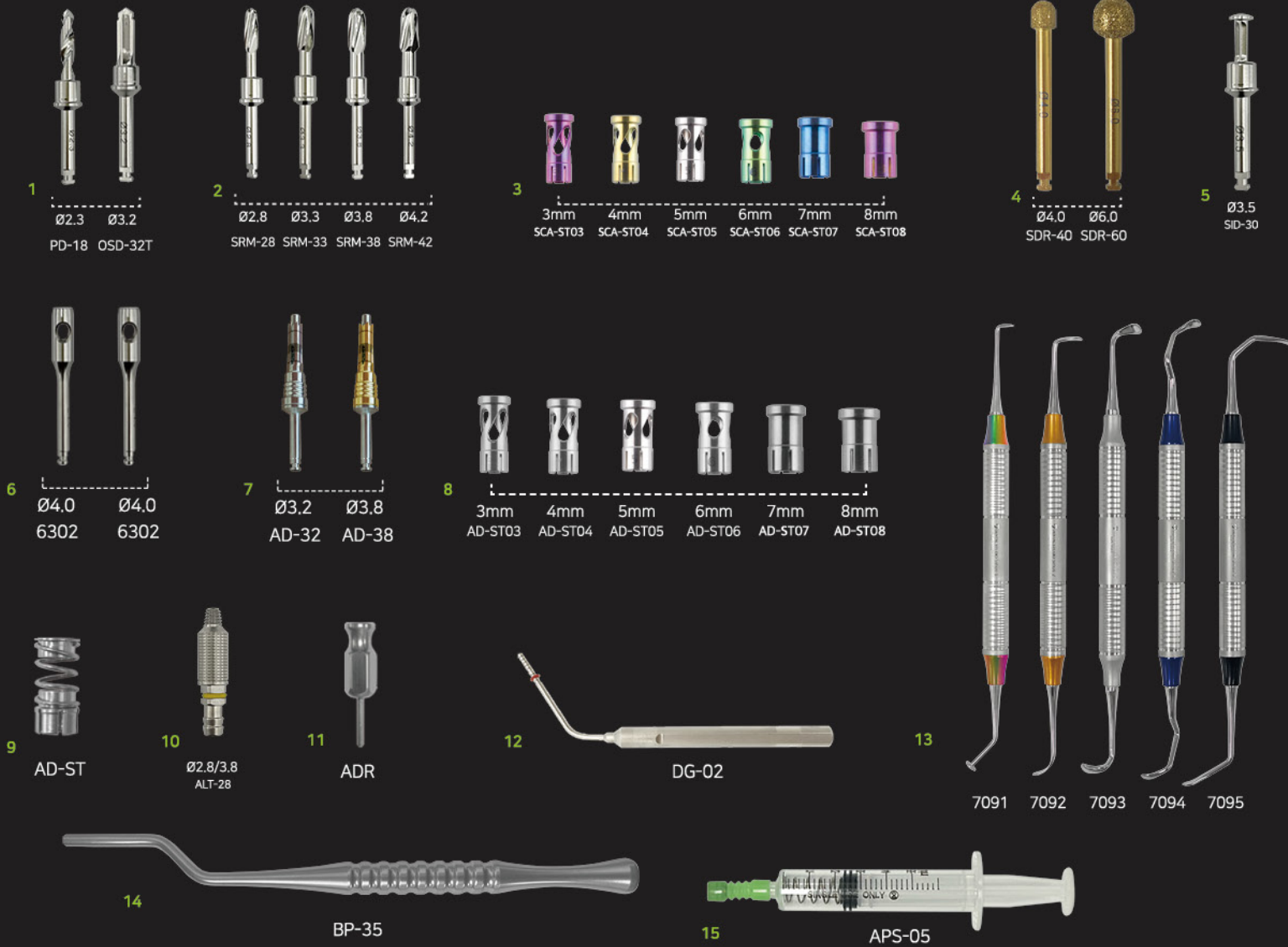
CASE 2



CASE 3



COMPONENT



1. Initial Drill : Ø2.3 / Ø3.2 2. Sinus Reamer : Ø2.8, Ø3.3, Ø3.8, Ø4.2 3. Stopper : 3~8mm[6EA] 4. Diamond Reamer : Ø4.0 / Ø6.0 5. Side Cutter
6. Tissue Punch : Ø4.0[2EA] 7. Aero Drill : Ø2.8 / Ø3.2 8. Aero Drill Stopper : 3~8mm[6EA] 9. Spring Stopper
10. Aqua Tip : Ø2.8/Ø3.8 11. Aero Drill Ræmover 12. Depth Gauge 13. SinusCurets : 5 options with 14. Bone Pusher 15. Aqua Pump Syringe

SINUS CRESTAL & LATERAL KIT

CODE NO. **7110**

-
- SINUS COMBINATION KIT**
- ADAPTERS:** AQUA ADAPTER, AQUA ADAPTER
- STOPPERS:** 02, 03, 04, 05, 06, 07, 08, 09, 10, 11, 02.8
- DRILLS:** DRILL Ø1.6, DRILL Ø2.3, DRILL Ø2.8, DRILL Ø3.3, DRILL Ø3.8, DRILL Ø4.2
- REAMERS:** CRISTAL REAMER, CRISTAL REAMER, CRISTAL REAMER, CRISTAL REAMER, CRISTAL REAMER, CRISTAL REAMER
- DIAMOND REAMERS:** Ø2.8, Ø3.3, Ø3.8, Ø4.2
- BONE WELL:** BONE WELL
- ADAPTERS:** AQUA ADAPTER, AQUA ADAPTER
- STOPPERS:** 02, 03, 04, 05, 06, 07, 08, 09, 10, 11, 02.8
- DRILLS:** DRILL Ø1.6, DRILL Ø2.3, DRILL Ø2.8, DRILL Ø3.3, DRILL Ø3.8, DRILL Ø4.2
- REAMERS:** CRISTAL REAMER, CRISTAL REAMER, CRISTAL REAMER, CRISTAL REAMER, CRISTAL REAMER, CRISTAL REAMER
- DIAMOND REAMERS:** Ø2.8, Ø3.3, Ø3.8, Ø4.2

CASE 1



1 PD-18 Ø1.8 PD-23 Ø2.3

2 SRM-28 Ø2.8 SRM-33 Ø3.3 SRM-38 Ø3.8 SRM-42 Ø4.2

3 SCA-ST02 2mm SCA-ST03 3mm SCA-ST04 4mm SCA-ST05 5mm SCA-ST06 6mm

4 DAR-28

5 ALT-28 Ø2.8/3.8 ALT-33 Ø3.3/4.2

6 AQUA-HA

7 SCL-ST10 1.0 SCL-ST15 1.5 SCL-ST20 2.0 SCL-ST25 2.5 SCL-ST30 3.0

8 SRM-80 Ø8.0 SRM-80T Ø6.5/8.0

9 CD-70 Ø7.0

10 SDR-80T Ø6.5/8.0

11 DCR-70 Ø7.0

12 SID-30 Ø3.5

13 DG-01

14 5702

15 AT-02

16 7091 7092 7093 7094 7095

- DENTAL STUDIO_SINUS COMBINATION KIT. 41

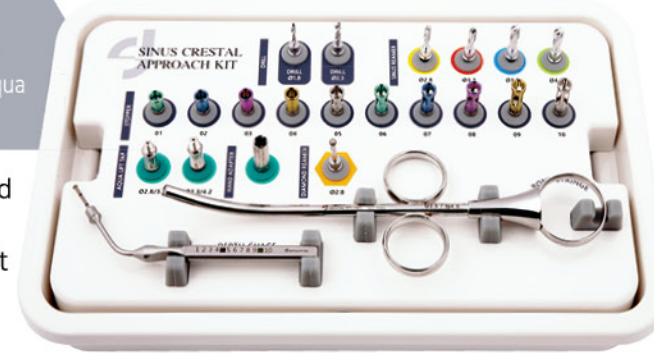
SINUS CRESTAL APPROACH KIT

Feature

CODE NO. 7020

- Safely separate and elevate the sinus membrane using the crestal approach.
- Contains sinus bone reamer and diamond bur for safe sinus access.
- Safely elevate the schneiderian membrane using 'non-contact' aqua lift tip.
- ✓ Includes four specially designed reamers and diamond burs with drill stoppers for precise and safe access.
- ✓ Sinus elevation is completed safely using the aqua lift tools.
- ✓ For a fast and safe crestal sinus lift and bone graft application.

Top view



Direction for use



Initial Drill Sinus Reamer Depth Gauge Aqua Lift Tip Bone Syringe Insert Implant

■ CASE 1



SINUS LATERAL APPROACH KIT

Feature

CODE NO. 7090

- All tools to complete a lateral access sinus lift procedure.
- Diamond drills and reamers with drill stoppers enable safe and efficient creation of the lateral window.

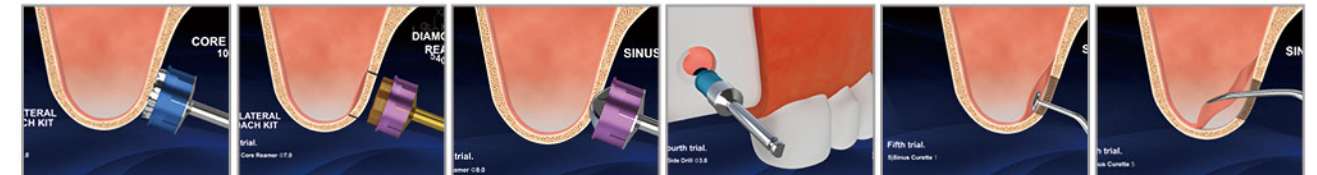
- ✓ Multiple size diamond reamers.
- ✓ Unique design for safe and efficient surgery.
- ✓ Includes five curettes matching all needs. (lowertray)

Top view

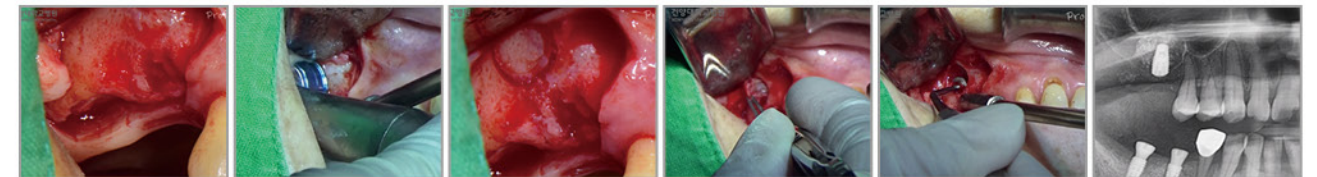


Direction for use

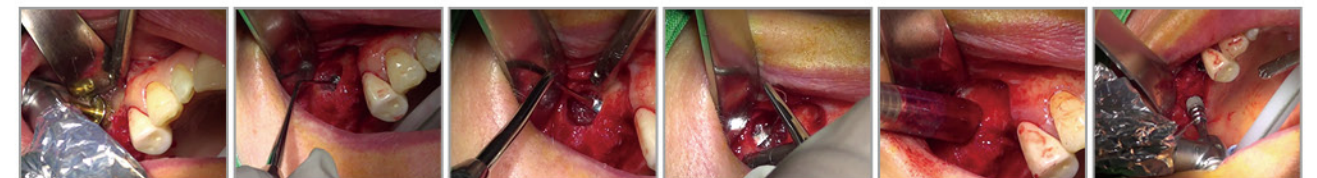
■ CASE 1



■ CASE 2



■ CASE 3



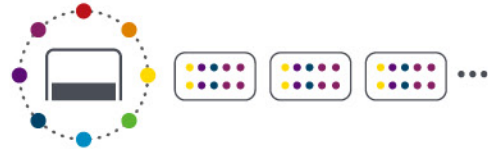
SIMPLE SINUS REAMER KIT

SIMPLE SINUS CRESTAL REAMER KIT

- Simple and economic set includes diamond reamers and drill stoppers dedicated to crestal approach surgery.

- ✓ An economic mini kit includes essential components.

CUSTOMIZE: Option to customize the stopper set.



- SRM : SINUS REAMER (Ø2.8, Ø3.3, Ø3.8, Ø4.2 / 4ea)
- SCA-ST: STOPPER SET (4mm~8mm / 5ea)
- DAR-28: DIAMOND BUR Ø2.8



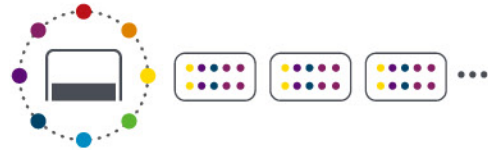
CODE NO. 7085

SIMPLE SINUS LATERAL REAMER KIT

- Simple and economic set includes diamond reamers and drill stoppers dedicated to lateral window approach.

- ✓ An economic mini kit includes essential components.

CUSTOMIZE: Option to customize the stopper set



- SRM-80 : Sinus Reamer Ø8.0
- SRM-80T : Sinus Reamer Ø6.5 / Ø8.0
- SDR-80T : Sinus Diamond Reamer Ø6.5 / Ø8.0
- SID-30 : Side drill Ø3.5
- DCR-70 : Diamond Core Reamer Ø7.0
- SCL-ST : Stopper Set (1.0~3.0mm 5ea)



CODE NO. 7120

AQUA SINUS LIFT KIT

Feature

- Elevation of the schneiderian membrane is completed safely using 'non-contact' aqua tip.
- Aqua tip uses water pressure to elevate the lining eliminating the risk of contact rupture.
- Accurate interlocking components prevents water leakage during application.

- ✓ Safe serration on the sinus membrane using water pressure.
- ✓ Choice of aqua tips ensure compatibility with all sinus drill.
- ✓ Efficient Aqua tip design prevents water leakage.

Direction for use



CASE 1



CODE NO. 7100

Top view



COMPONENT



1. Aqua Tip [Taper Type] : Ø2.3/3.8, Ø3.3/4.2
2. Aqua Tip [Straight Type] : Ø3.2/3.5, Ø3.7/4.0, Ø4.2/4.5
3. Aqua Hand Adapter
4. Silicone Tube

BONE EXPANDER KIT

Feature

- Reverse threaded bone expanding drills.
- Includes adapter for Straumann driver.
- Can be used with motor or ratchet.

- ✓ Five reverse threaded bone
- ✓ Bone trimmer
- ✓ Bone saw Compact Size

Basic
A TYPE
7031-1

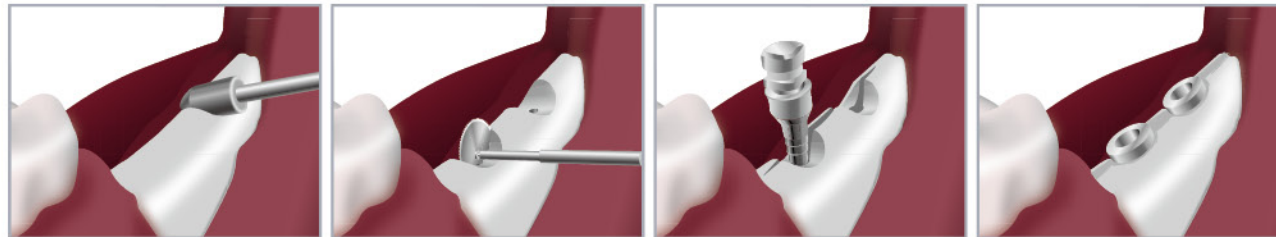
Master
B TYPE
7031-2

CODE NO. 7030
CODE NO. 7031-1
CODE NO. 7031-2

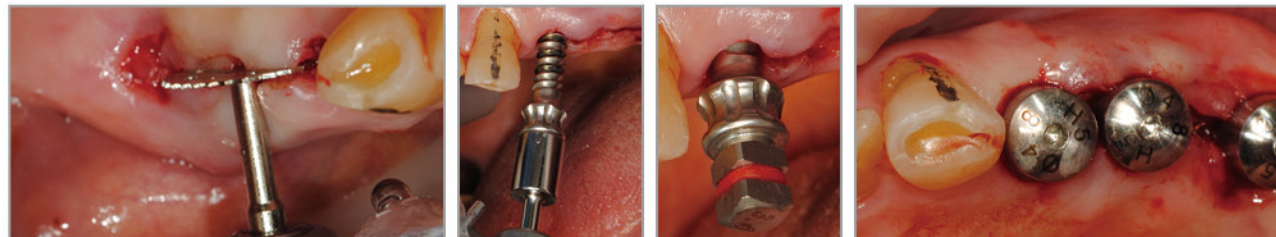
Top view



Direction for use



Crest Trimmer +Recommended RPM 800~1200RPM Sawing +Recommended RPM 800~1200RPM Expanding +Recommended RPM 30~50RPM Insert Implant



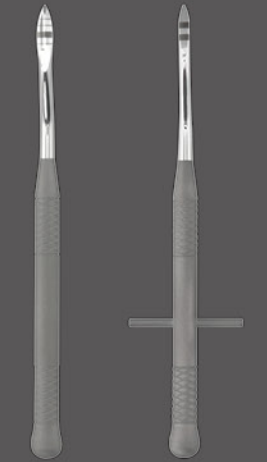
COMPONENT

A variety of tools by
Dental Studio ensure Quicker and Safer surgery.



+

COMPLEMENT KIT



CODE NO. 4801 CODE NO. 4802

1. Crest Trimmer : Used for trimming and flattening the narrow or thin crestal bone.
 2. Saw Ø10 : Used for part splitting crestal bone. (Thickness 0.3mm, Diameter 9.8mm)
 3. Pilot Drill: Creates initial osteotomy to allow insertion of expansion drills.
 4. Expander : Use sequentially to expand the bone width before implant placement.
 5. Ratchet : Used in conjunction with the expanding drills.
 6. Ratchet Adapter : Extends the reach of the ratchet and expander drills.
 7. Handpiece Adapter :Allows the expander drills to be used with the implant motor.
[Recommended 30~50RPM]
 8. Hand/Strauman Adapter : Allows the expander drills to be used by hand or in conjunction with a Straumann type
- * TYPE A includes all tools for bone expansion. TYPE B includes the addition of two premium bone expansion tools.

EASY CROWN INLAY & ONLAY REMOVER KIT

Feature

- Easily remove inlay or onlay crowns.
- Remove with simple drilling technique
- The only kit needed for all onlay and inlay crowns.

- ✓ Perfectly designed to remove any inlay and onlay crown.
- ✓ Options for ratchet or handpiece connection.
- ✓ Allows patient friendly trauma free removal.

CODE NO. 7500

Top view



COMPONENT



1. Metal Cutting Bur Ø1.0, Ø1.2
3. Handpiece Remover Ø1.6, Ø1.8

2. Ratchet Remover Ø1.6(S), Ø1.6, Ø1.8
4. Ratchet

HOW TO USE

- 1) Use metal cutting bur Ø1.0 or Ø1.2.
 - ※Take care to avoid the cement line. (Use a mirror to check)
 - ※Ensure a 90° angle between bur and prosthetic is maintained.

Carry out removal using the ratchet or hand driver.

- 1) Turn remover by hand initially to ensure it is inserted in the hole.
- 2) Select the largest size remover to ensure grip inside hole.
- 3) Use clockwise with ratchet, handpiece, or handpiece driver.

(It is recommended that RPM should be set to 30~50RPM when removal is carried out with the handpiece.)
- 4) Agitation will ensure the crown separates from the tool after removal.

Direction for use

■ INRAY CASE



■ ONRAY CASE



INCISOR & SEPTUM TRIMMER KIT

Feature

- Suitable for anterior or posterior implant placement.
- Ensures optimal implant alignment.
- Includes a selection of drills matched to surgeons' preference.

✓ Overcome challenging bone to ensure perfect post extraction implant alignment.

CODE NO. 7250

Top view

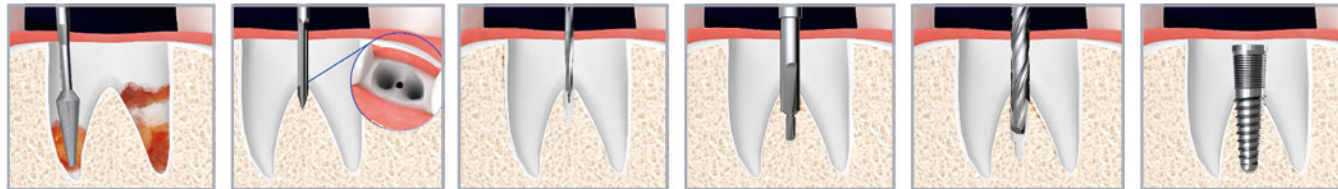


Direction for use

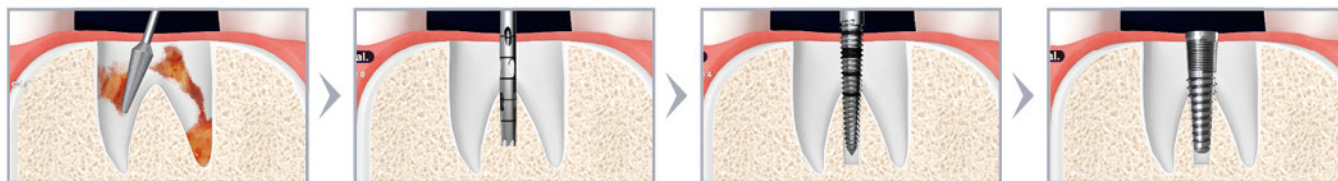
■ INCISOR



■ SEPTUM-1



■ SEPTUM-2



COMPONENT



1. Point Drill Ø2.0 : An ultra sharp first drill to initiate accurate osteotomy positioning.
2. Lindemann Drill Ø2.0 : Use after the pilot drill to expand the osteotomy
3. Twist Drill Ø2.0 : Ensures accurate drilling to the desired implant depth.
4. Pilot Drill Ø2.0/3.0 : Use after the Point drill.
5. Guide Pin Ø2.0/3.0 : Allows accurate depth and alignment checking.
6. Diamond Bur Ø3.0 : Easily remove bone fragments and granulation tissue that will otherwise delay bone healing.
7. Diamond Bur Ø1.8/4.0 : Alternative design removes bone fragments and granulation tissue.
8. Trepine Bur Ø2.3/3.0 : Use to remove bone from the septum ahead of implant placement.
9. Expander Ø2.4/3.4 : Use after Point and Twist Drills to expand bone ahead of implant placement.

TITANIUM BRUSH

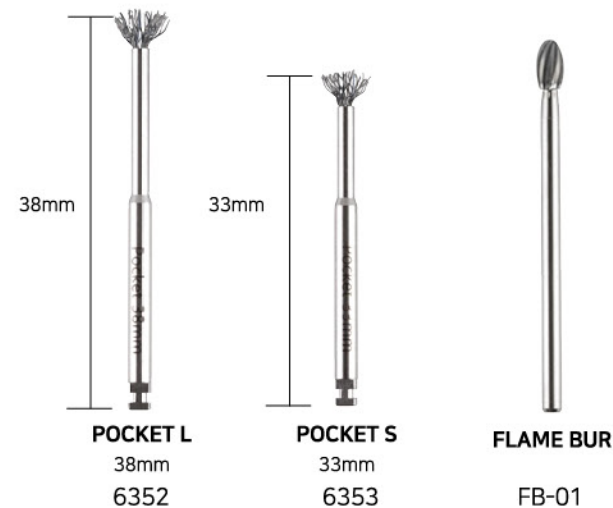
Feature

- NiTi brushes for management of peri-implant infected sites.
- Use the NiTi brush to remove plaque, calculus, cement, and other foreign materials from the compromised implant site.
- Use the flame bur to prepare the exposed implant threads.
- -sub-gingival insertion can be done due to the special design of the flame bur.

- ✓ Special design minimizes damage to the implant surface.
- ✓ Optimised for easy access.
- ✓ Efficiently remove peri-implant debris and prepare the implant for re-treatment.

A TYPE & **B TYPE**
6350-A 6350-B

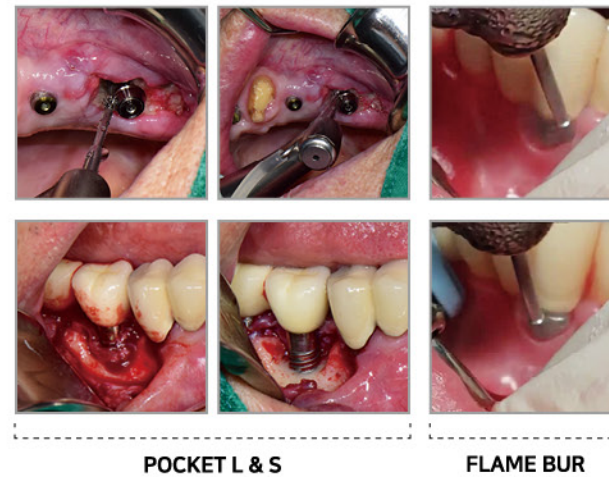
COMPONENT



CODE NO. 6350-A
CODE NO. 6350-B



Direction for use



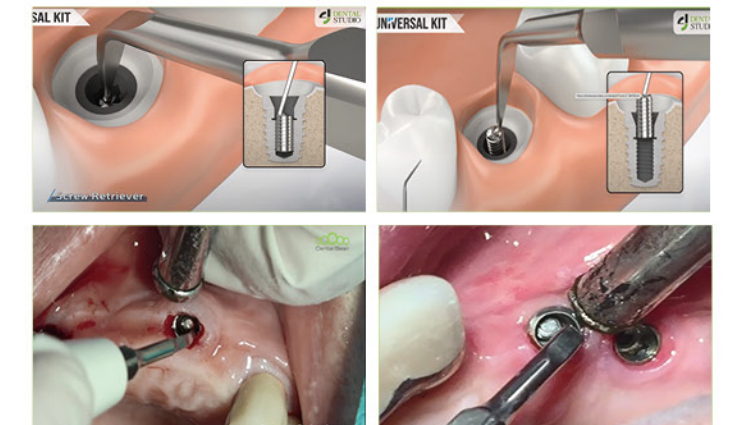
EASY SCREW RETRIEVER KIT

Feature

- Easily remove fractured or broken prosthetic screw.
- Suitable for deeply embedded fixtures.

- ✓ Special serrated tip helps grip fractured screw.
- ✓ Screw removal in less than 1 minute.
- ✓ Kit includes long (15mm) and short 10mm) tools.
- ✓ Economical multi-use kit.

CODE NO. 7400



TREPHINE

ELI KIT

Feature

- Multi-use trephine set for implant removal and autogenous bone collection.
- Inclusion of multiple diameter trephines ensures quick removal of almost any width implant.

- ✓ Easy & Fast application
- ✓ Low Bone Heating
- ✓ Ideal Size & Design

CODE NO. 6400



COMPONENT



TISSUE PUNCH

Feature

- Used for removing gingival tissues.
- Minimizes bone loss.

- ✓ Easy & Fast Application
- ✓ Low Bone Heating

CODE NO. 6300



COMPONENT



1. Access hole allows easy removal of gingival tissue after retrieval.
2. Use tissue punch after guide drill for more accurate trephination.

DIAMOND BUR

Feature

- The kit includes a selection of diamond burrs to meet all applications.
- Special diamond pattern developed for efficient cutting.

- ✓ Excellent cutting efficiency.
- ✓ Highly durable design.
- ✓ Multiple head designs to meet all applications.

CODE NO. **7270**



Set(7EA)

COMPONENT



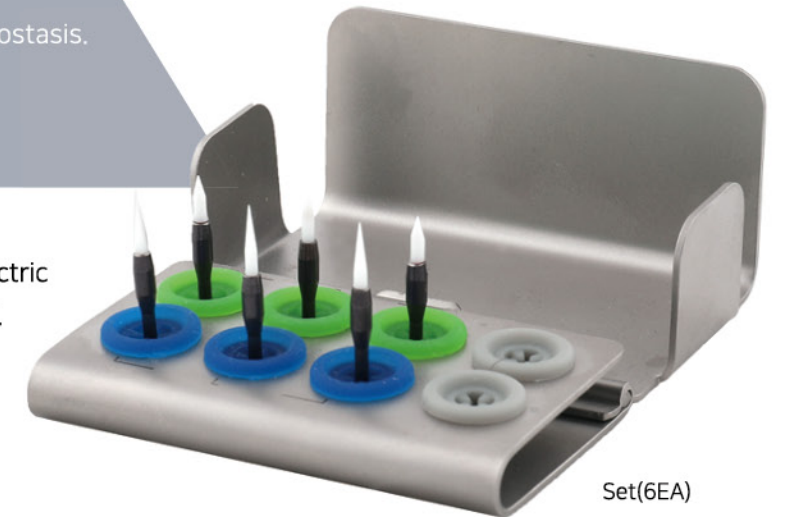
SOFT TISSUE TRIMMER

Feature

- Low trauma soft tissue cutting with haemostasis.
- Excellent healing.
- Produced from zirconia ceramic.

- ✓ Quick healing and hemostasis effects
- ✓ Removes the need for a surgical blade or electric scalpel. Bleeding and necrosis risk is reduced.

CODE NO. **6360**



Set(6EA)

COMPONENT



- We recommend water spray cooling at 150,000-300,000 RMP.



MESH

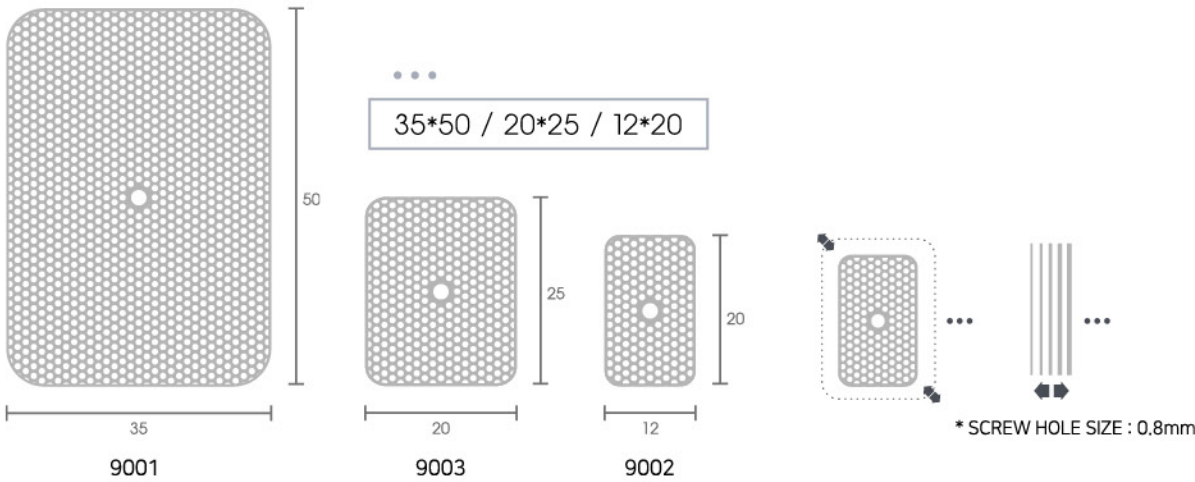
Feature

- ✓ Thin and flexible for easy application.
- ✓ Easy to cut to your desired size.
- ✓ High strength with pre-cut screw hole.

CODE NO. 9001 / 9003 / 9002



Actual size



BONE TRIMMER KIT

Feature

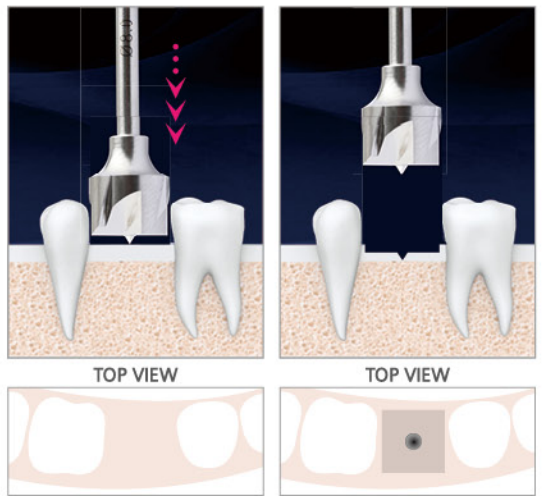
- Thinn cutting saw iis ideal for thin ridges.
 - Bone planer creates the flattened crest ready for implant bed preparation.
 - Create easy access for prosthetics.
- ✓ Kit with major components used for trimming or expanding the bone.

CODE NO. 7261

Top view



Direction for use



Ø8	22mm	6100-8
	32mm	6100-8L
Ø10	22mm	6100-10
	32mm	6100-10L
Ø12	22mm	6100-12
	32mm	6100-12L

1. Crest Trimmer Ø5 : Trim and flatten narrow and thin bone crest.
2. Bone Planer Ø6, Ø8
3. Bone Saw : Total 6EA: Ø8(22mm), Ø8(32mm), Ø10(22mm), Ø10(32mm), Ø12(22mm)

PRF BOX

Feature

CODE NO. 7150

- Large capacity tray holds several membranes at one time. Space to separate all components and void cross contamination.

COMPONENT

1. Mini Tray
2. Tube Holder
3. Case
4. Plastic core [4ea]
5. Plastic core push
6. Press board
7. Lid



HOW TO USE

- Create blood fraction using appropriate tube and centrifuge.
- Remove PRF gel from tube and separate the yellow portion with a blade or scissors.
- Place the separated yellow portion onto the middle board and compress with board 6.
- Mix the remaining extracted liquid with your chosen bone graft.

ABUTMENT ALIGNMENT PIN KIT

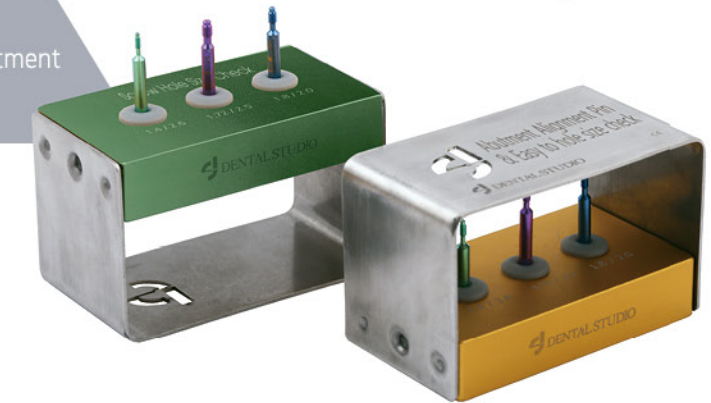
AAP KIT Easy to implant hole size check

Feature

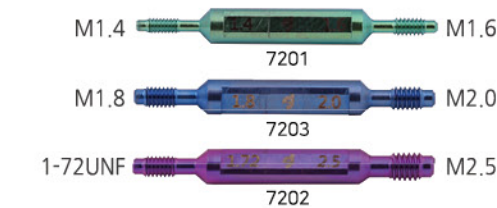
CODE NO. 7200

- Check the correct implant alignment.
- Select the abutment angle.
- Check the internal implant thread prior to abutment replacement.
- Check the internal diameter of any implant.

Top view

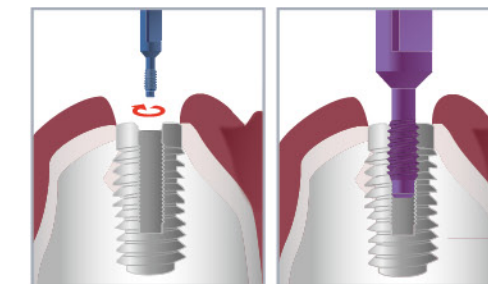


COMPONENT



...

M1.4/M1.6 M1.8/M2.0 1-72UNF/M2.5



Direction for use

1. Choose appropriate alignment pin and insert into the implant lumen.
2. Ensure the pin engages implant and does not spin.
3. Select the appropriate abutment to match the engaged pin.

EASY SERIES

Upgrading conventional areas
through matchless design

NEW COMPOSITION NEW EASY SERIES

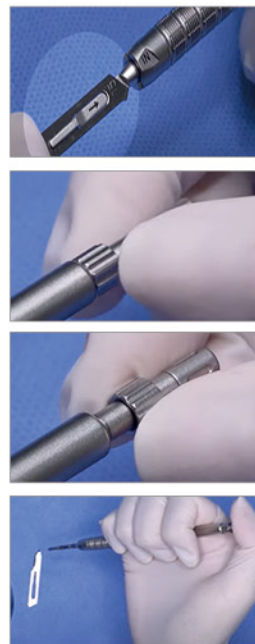
Special design unique to dental studio.

Created following extensive R&D.
EASY SERIES is recognized worldwide as representative of Dental Studio quality.
NEW EASY SERIES
Incorporate feedback from top clinicians to ensure safe, predictable, and precise applications.

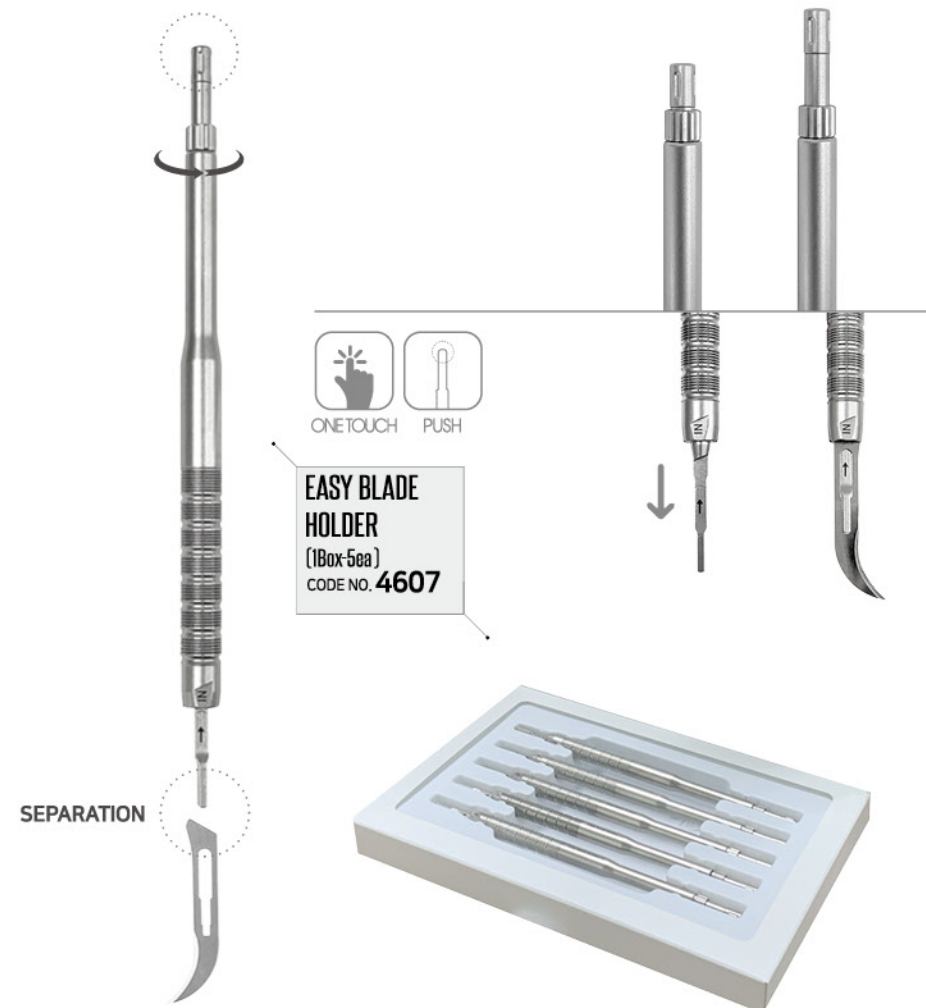
Change standards, Beyond stereotypes

EASY SERIES 01

EASY BLADE HOLDER

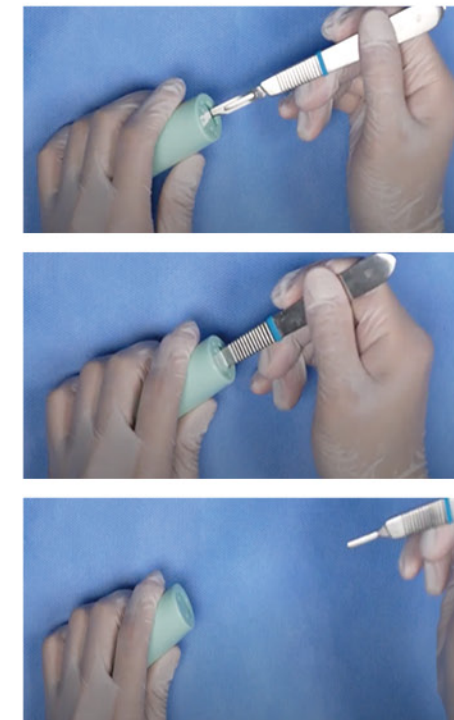


- Scalpel with a removable blade
- Prevents injury and cross infection.
- Saves time.



EASY SERIES 02

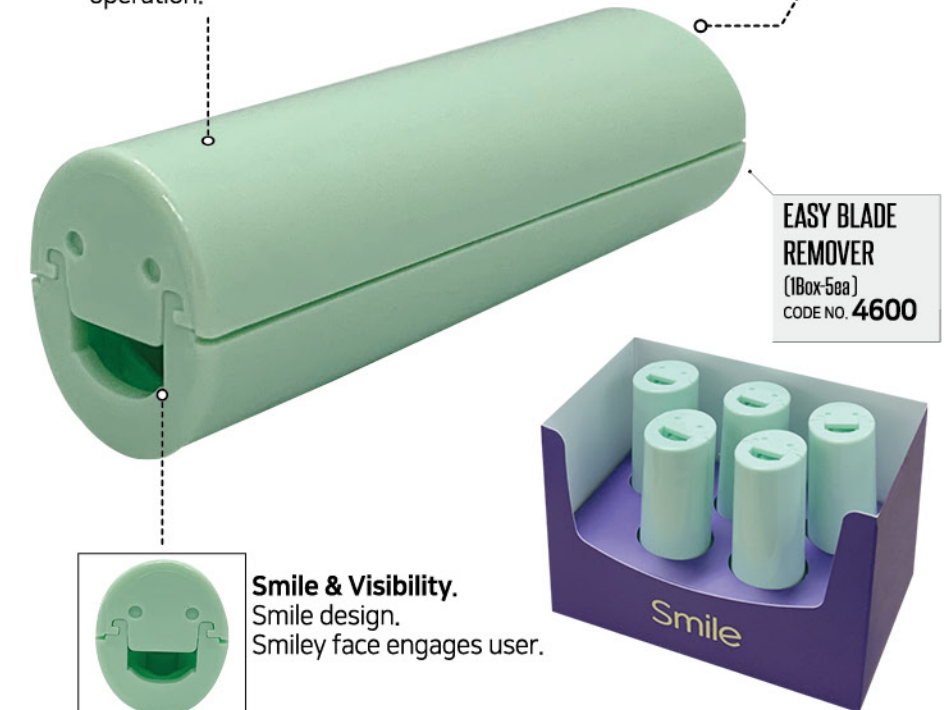
EASY BLADE REMOVER



- Cross infection risk is removed.
- Safety remove and retain used blades.
- Reduces colleague risk and improves productivity.
- Minimalist design saves space..

Safe & Easy.
Easy to use and safe in operation.

Simple & Useful
Cylindrical shape for easy storage and application.



Smile & Visibility.
Smiley design.
Smiley face engages user.

EASY SERIES 03

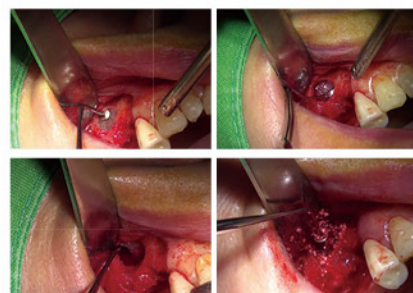
EASY SINUS CURETTE

Flexible Sinus Lift instruments increase operator feel reducing perforation risk. Flexibility comes from unique material and design.

- Easy application.
- Reduces perforation risk.



CODE NO. 7096F (SET)



SINUS CURETTE 1
CODE NO. 7091F

SINUS CURETTE 2
CODE NO. 7092F

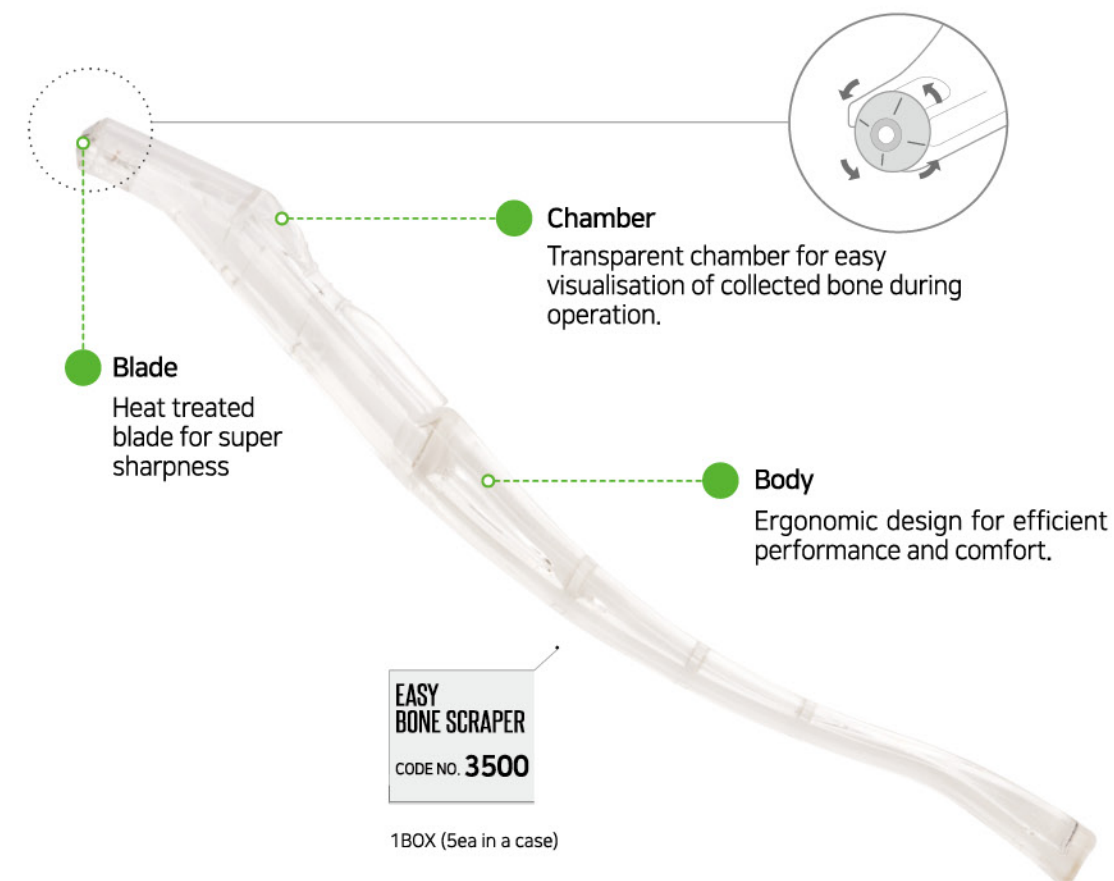
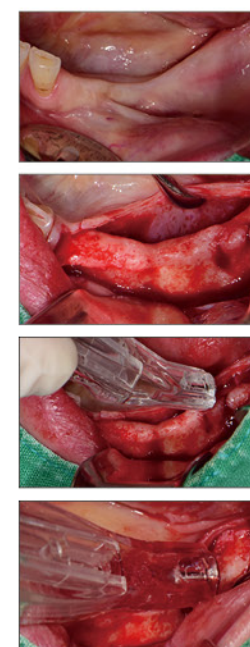
SINUS CURETTE 3
CODE NO. 7093F

SINUS CURETTE 4
CODE NO. 7094F

EASY SERIES 04

EASY BONE SCRAPER

- Angled tip for easy lateral access.
- Possibility to use four fresh cutting areas by rotating blade through 90°
- Transparency for easy visualization of harvested bone during operation.



EASY SERIES 05

EASY FORCEPS FOR CHILDREN

The advantages of Easy Forceps are applied to forceps for deciduous teeth, so that deciduous teeth can be extracted in an easier and safer way.



- Minimise periodontal damage with micro tip.
- Small design means forceps can be shielded from view when extracting children's teeth
- Tip design prevents slippage and aids visualization.
- Sprung handle for convenience.



MAXILLARY
ANTERIOR TOOTH
CODE NO. 3251S



MANDIBULAR
ANTERIOR TOOTH
CODE NO. 3252S



MAXILLARY
POSTERIOR TOOTH
CODE NO. 3255S



MANDIBULAR
POSTERIOR TOOTH
CODE NO. 3259S

EASY SERIES 06

EASY MULTI NEEDLE HOLDER

- Multi-Needle Holder combines needle holder and cutting scissors (2 in 1).
- Jaw is precision made from European tungsten carbide for increase grip.
- 2 in 1 design saves time and enables surgeon only operation.



Holder Mode



Scissor Mode



CUTTING HOLDING



ZOOM

European Tungsten
carbide used

EASY MULTI
NEEDLE HOLDER
CODE NO. 1005

EASY SERIES 07

EASY 360° SURGICAL SUCTION



The suction tip rotates through 360° for excellent visibility and unobstructed access to molar teeth.

- Access every section of the mouth
- Easy access irrespective of chair design.



EASY SERIES 08

EASY IRRIGATION TUBE



- All parts can be cleaned and autoclaved up to 30 times.
- Flushing 4 - 5 times with clean water prior to autoclaving prevents clogging/corrosion.
- Luer lock for compatibility.



EASY SERIES 09

EASY PERIOTOME



Safely and efficiently separates periodontal ligament from bone.

CAUTION: For cutting only – do not use to elevate or extract.



Point!_2mm STRAIGHT

EASY PERIOTOME
2mm [STRAIGHT]
CODE NO. **3305**

2mm



Point!_3mm STRAIGHT

EASY PERIOTOME
3mm [STRAIGHT]
CODE NO. **3306**

3mm



Point!_2mm CURVED

EASY PERIOTOME
2mm [CURVED]
CODE NO. **3307**

2mm



Point!_3mm CURVED

EASY PERIOTOME
3mm [CURVED]
CODE NO. **3308**

3mm



Point!_2mm CURVED

EASY PERIOTOME
2mm [CURVED]
CODE NO. **3311**



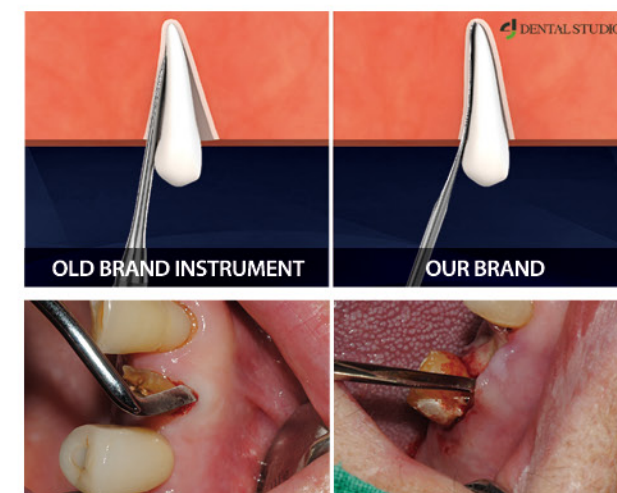
Point!_2mm CURVED

EASY PERIOTOME
2mm [CURVED]
CODE NO. **3312**



★ FLEXIBLE TYPE

EASY PERIOTOME Flexible tips ensure perfect access and efficient separation of the



OLD BRAND INSTRUMENT

OUR BRAND

EASY SERIES 10

EASY LUX



- Unique design with thin flexible blade.
- Design tip penetrates deep into PDL space making for efficient leverage.
- Use minimal force to extraction without soft tissue and alveolar bone trauma.



*Unique alloy enables a thin and flexible profile.
Low force extraction retains bone profile and reduces soft tissue trauma.



※Caution : Do not lift up or twist with excessive force such as ELEVATOR.

EASY SERIES 11

EASY FORCEPS

Our specialized design enables easier and faster tooth extraction.



EASY FORCEPS incorporate a unique tip design that penetrates the periodontal space. Such a design lessens the luxation effect and reduces root residues while minimizing alveolar bone damage.

